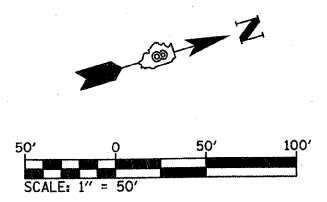
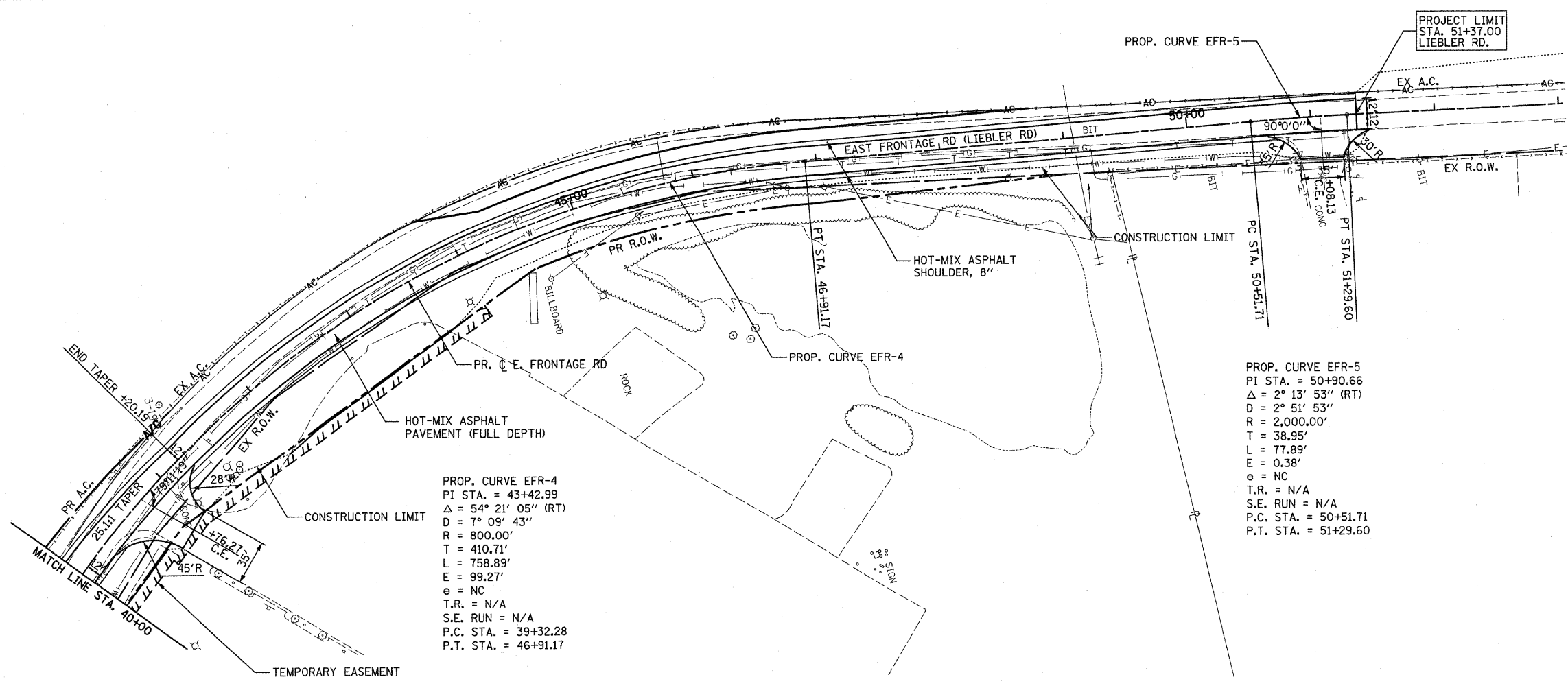


FILE NO.	SECTION	COUNTY	TOTAL SHEETS	SHEET NO.
70		MADISON	420	53
STA. 40+00		TO STA. 51+37.00		
CONTRACT NO.: 76709				
• 60-10K-1, 60-10HB				



PLAN	DATE	BY
REVISIONS		
NO.		
NO.		
NO.		
NO.		

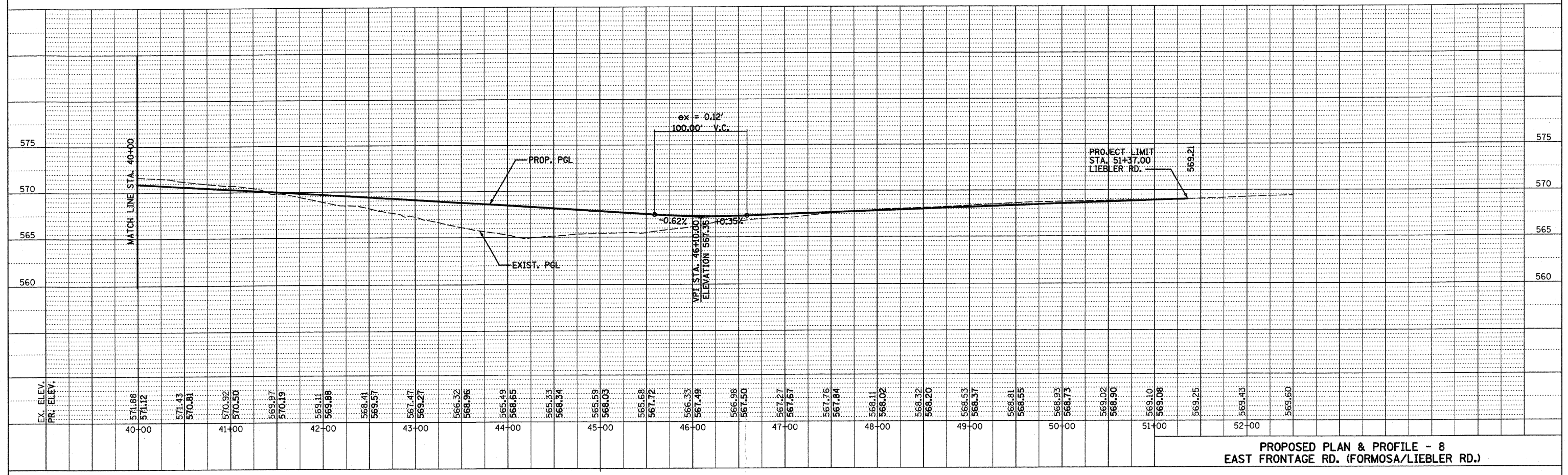
PROFILE	DATE	BY
REVISIONS		
NO.		
NO.		
NO.		
NO.		



PROP. CURVE EFR-4
 PI STA. = 43+42.99
 $\Delta = 54^\circ 21' 05''$ (RT)
 $D = 7^\circ 09' 43''$
 $R = 800.00'$
 $T = 410.71'$
 $L = 758.89'$
 $E = 99.27'$
 $\theta = NC$
 $T.R. = N/A$
 $S.E. RUN = N/A$
 $P.C. STA. = 39+32.28$
 $P.T. STA. = 46+91.17$

PROP. CURVE EFR-5
 PI STA. = 50+90.66
 $\Delta = 2^\circ 13' 53''$ (RT)
 $D = 2^\circ 51' 53''$
 $R = 2,000.00'$
 $T = 38.95'$
 $L = 77.89'$
 $E = 0.38'$
 $\theta = NC$
 $T.R. = N/A$
 $S.E. RUN = N/A$
 $P.C. STA. = 50+51.71$
 $P.T. STA. = 51+29.60$

NOTE:
 1. ALL DIMENSIONS, STATIONS AND OFFSETS ARE TO THE EDGE OF PAVEMENT UNLESS OTHERWISE NOTED.



**PROPOSED PLAN & PROFILE - 8
 EAST FRONTAGE RD. (FORMOSA/LIEBLER RD.)**

PLOT DATE: *DATE-TIME*

DGN-SPEC
 *REF- 236cct01.dgn
 *REF- 236cct01.dgn
 *REF- 236cct01.dgn
 *REF- 236cct01.dgn
 *REF- 236cct01.dgn