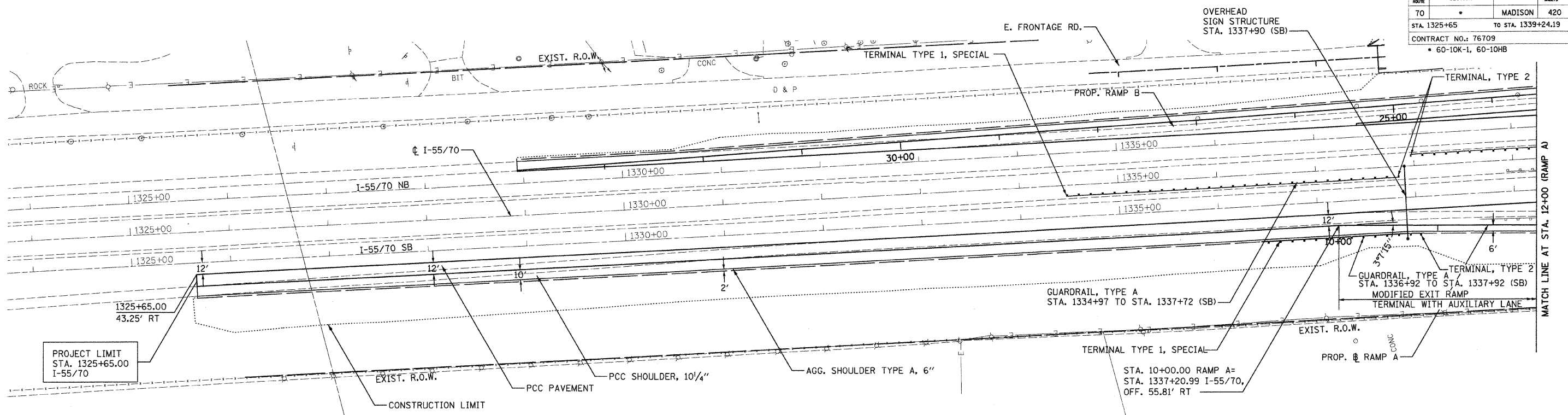
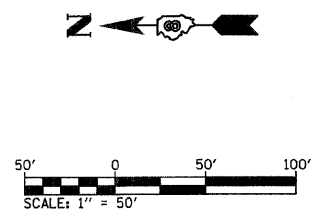


FBI ROUTE	SECTION	COUNTY	TOTAL SHEETS	SHEET NO
70	*	MADISON	420	54
STA. 1325+65		TO STA. 1339+24.19		
CONTRACT NO.: 76709				
* 60-10K-1, 60-10HB				



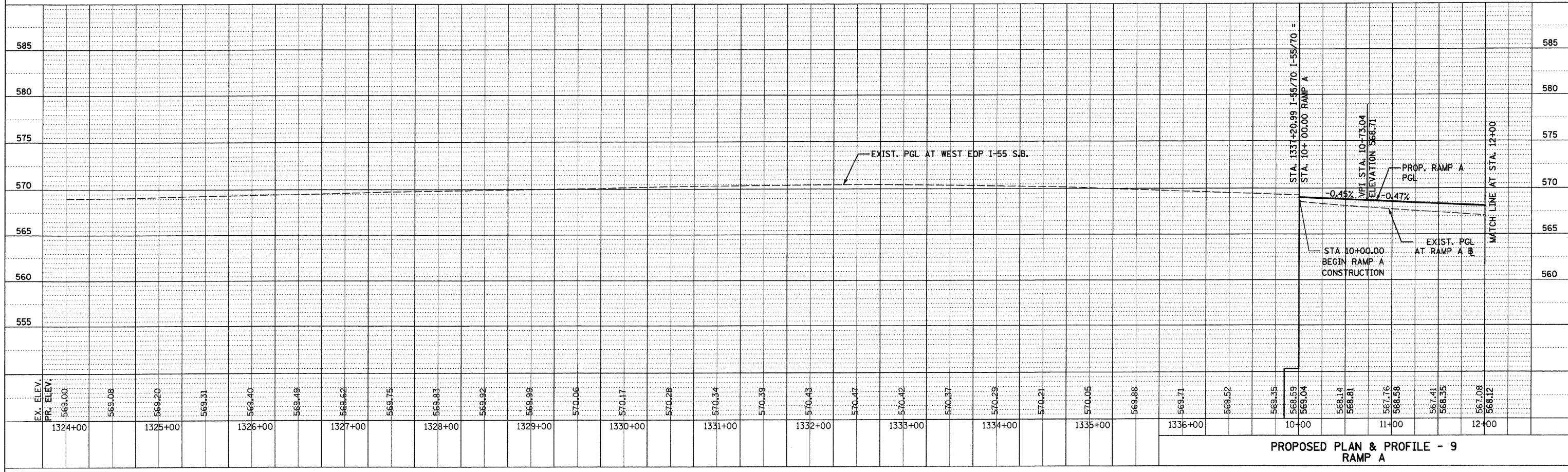
PROJECT LIMIT  
STA. 1325+65.00  
I-55/70

- NOTE:
- FOR MORE DETAILS ON EXIT RAMP TERMINAL SEE STD. 420301.
  - ALL DIMENSIONS, STATIONS AND OFFSETS ARE TO THE EDGE OF PAVEMENT UNLESS OTHERWISE NOTED.



PLAN	SURVEYED	DATE
	NOTED	
	BY	
	NO.	

PROFILE	SURVEYED	DATE
	NOTED	
	BY	
	NO.	



PROPOSED PLAN & PROFILE - 9  
RAMP A

\*DATE-TIME\*  
\*DGN-SPEC\*  
\*REF- 236c01.dgn  
\*REF- 236c02.dgn  
\*REF- 236c03.dgn  
\*REF- 236c04.dgn  
\*REF- 236c05.dgn  
\*REF- 236c06.dgn  
\*REF- 236c07.dgn  
\*REF- 236c08.dgn  
\*REF- 236c09.dgn  
\*REF- 236c10.dgn  
\*REF- 236c11.dgn  
\*REF- 236c12.dgn  
\*REF- 236c13.dgn  
\*REF- 236c14.dgn  
\*REF- 236c15.dgn  
\*REF- 236c16.dgn  
\*REF- 236c17.dgn  
\*REF- 236c18.dgn  
\*REF- 236c19.dgn  
\*REF- 236c20.dgn  
\*REF- 236c21.dgn  
\*REF- 236c22.dgn  
\*REF- 236c23.dgn  
\*REF- 236c24.dgn  
\*REF- 236c25.dgn  
\*REF- 236c26.dgn  
\*REF- 236c27.dgn  
\*REF- 236c28.dgn  
\*REF- 236c29.dgn  
\*REF- 236c30.dgn  
\*REF- 236c31.dgn  
\*REF- 236c32.dgn  
\*REF- 236c33.dgn  
\*REF- 236c34.dgn  
\*REF- 236c35.dgn  
\*REF- 236c36.dgn  
\*REF- 236c37.dgn  
\*REF- 236c38.dgn  
\*REF- 236c39.dgn  
\*REF- 236c40.dgn  
\*REF- 236c41.dgn  
\*REF- 236c42.dgn  
\*REF- 236c43.dgn  
\*REF- 236c44.dgn  
\*REF- 236c45.dgn  
\*REF- 236c46.dgn  
\*REF- 236c47.dgn  
\*REF- 236c48.dgn  
\*REF- 236c49.dgn  
\*REF- 236c50.dgn  
\*REF- 236c51.dgn  
\*REF- 236c52.dgn  
\*REF- 236c53.dgn  
\*REF- 236c54.dgn  
\*REF- 236c55.dgn  
\*REF- 236c56.dgn  
\*REF- 236c57.dgn  
\*REF- 236c58.dgn  
\*REF- 236c59.dgn  
\*REF- 236c60.dgn  
\*REF- 236c61.dgn  
\*REF- 236c62.dgn  
\*REF- 236c63.dgn  
\*REF- 236c64.dgn  
\*REF- 236c65.dgn  
\*REF- 236c66.dgn  
\*REF- 236c67.dgn  
\*REF- 236c68.dgn  
\*REF- 236c69.dgn  
\*REF- 236c70.dgn  
\*REF- 236c71.dgn  
\*REF- 236c72.dgn  
\*REF- 236c73.dgn  
\*REF- 236c74.dgn  
\*REF- 236c75.dgn  
\*REF- 236c76.dgn  
\*REF- 236c77.dgn  
\*REF- 236c78.dgn  
\*REF- 236c79.dgn  
\*REF- 236c80.dgn  
\*REF- 236c81.dgn  
\*REF- 236c82.dgn  
\*REF- 236c83.dgn  
\*REF- 236c84.dgn  
\*REF- 236c85.dgn  
\*REF- 236c86.dgn  
\*REF- 236c87.dgn  
\*REF- 236c88.dgn  
\*REF- 236c89.dgn  
\*REF- 236c90.dgn  
\*REF- 236c91.dgn  
\*REF- 236c92.dgn  
\*REF- 236c93.dgn  
\*REF- 236c94.dgn  
\*REF- 236c95.dgn  
\*REF- 236c96.dgn  
\*REF- 236c97.dgn  
\*REF- 236c98.dgn  
\*REF- 236c99.dgn  
\*REF- 236c100.dgn