

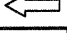
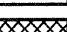




F&P ROUTE	SECTION	COUNTY	TOTAL SHEETS	SHEET NO.
70	*	MADISON	420	75
STA.	TO STA.			
CONTRACT NO.: T6709				
60-10K-1,60-10HB				



**LEGEND:**

-  EXISTING OR NEW PAVEMENT USED FOR MAINTENANCE OF TRAFFIC
-  CONSTRUCTION LIMITS DURING STAGE
-  DIRECTION OF TRAFFIC ARROW
-  NEW PAVEMENT
-  TEMPORARY PAVEMENT
-  TEMPORARY TRAFFIC SIGN

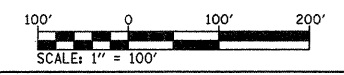
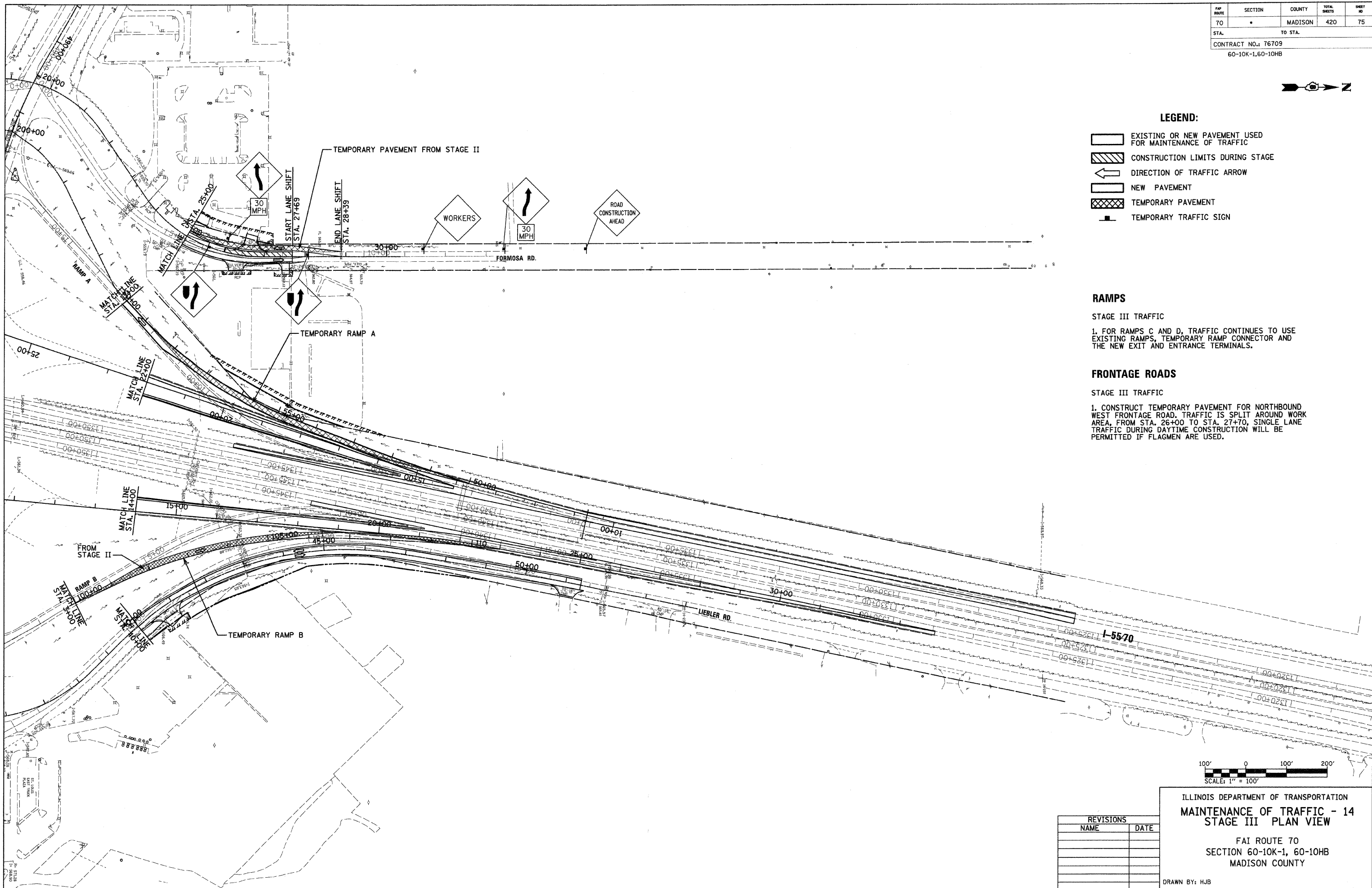
**RAMPS**

- STAGE III TRAFFIC
- FOR RAMPS C AND D, TRAFFIC CONTINUES TO USE EXISTING RAMPS, TEMPORARY RAMP CONNECTOR AND THE NEW EXIT AND ENTRANCE TERMINALS.

**FRONTAGE ROADS**

- STAGE III TRAFFIC
- CONSTRUCT TEMPORARY PAVEMENT FOR NORTHBOUND WEST FRONTAGE ROAD. TRAFFIC IS SPLIT AROUND WORK AREA, FROM STA. 26+00 TO STA. 27+70, SINGLE LANE TRAFFIC DURING DAYTIME CONSTRUCTION WILL BE PERMITTED IF FLAGMEN ARE USED.

PLAN	DATE
BY	
REVISIONS	
NO.	
DATE	
BY	
REVISIONS	
NO.	
DATE	



REVISIONS	
NAME	DATE

ILLINOIS DEPARTMENT OF TRANSPORTATION  
**MAINTENANCE OF TRAFFIC - 14**  
**STAGE III PLAN VIEW**

FAI ROUTE 70  
SECTION 60-10K-1, 60-10HB  
MADISON COUNTY

DRAWN BY: HJB

DATE-TIME  
DDMM-SSPC  
REF