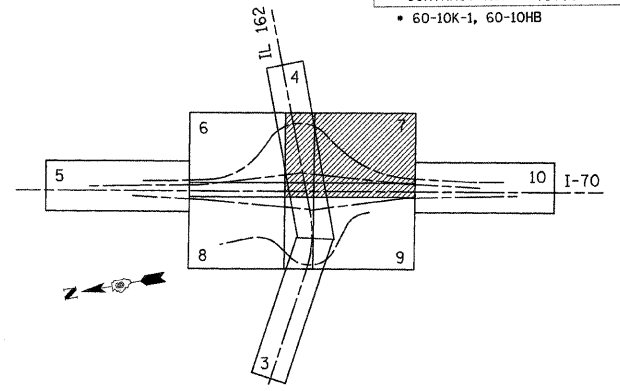
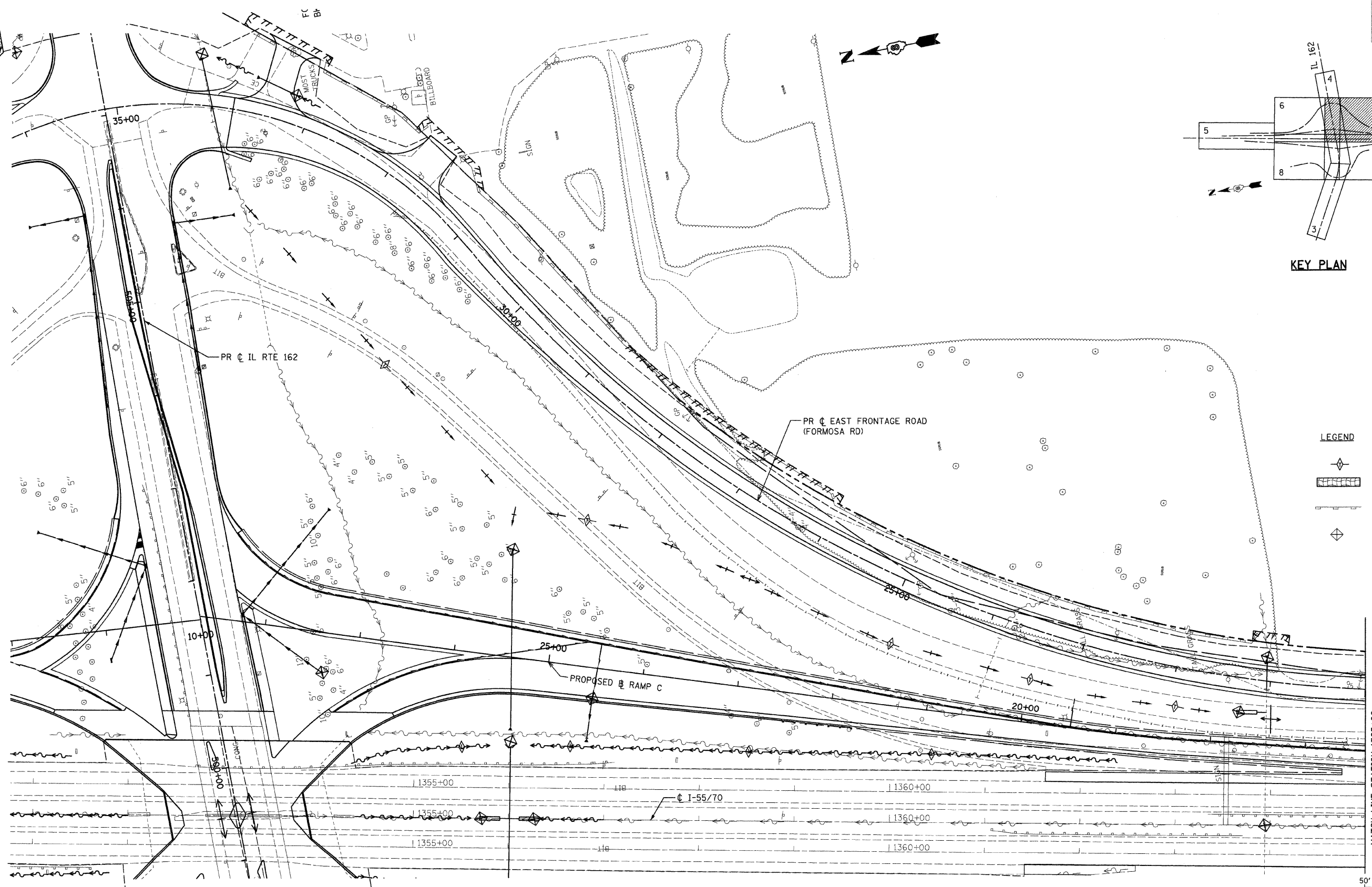


FAI ROUTE	SECTION	COUNTY	TOTAL SHEETS	SHEET NO.
70		MADISON	420	100
STA. 1353+15.77		TO STA. 1365+00		
CONTRACT NO. 76709				
• 60-10K-1, 60-10HB				







KEY PLAN

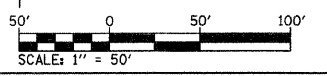
PLAN	SURVEYED	DATE
	PLOTTED	BY
	CHECKED	
	RT. OF WAY CHECKED	
	NO. OF	
	CADD FILE NAME	



LEGEND

-  TEMPORARY DITCH CHECK
-  EROSION CONTROL BLANKET
-  PERIMETER EROSION BARRIER
-  INLET AND PIPE PROTECTION

MATCH LINE STATION 1365+00



NOTES:

1. FOR DRAINAGE INFORMATION, SEE DRAINAGE PLANS.
2. PERIMETER EROSION BARRIER IS LOCATED ON TEMPORARY EASEMENT/PERMANENT EASEMENT/R.O.W. LINE, AS SHOWN ON THE PLANS.
3. FOR PERMANENT EROSION CONTROL INFORMATION, SEE SEEDING PLANS.
4. FOR EROSION CONTROL DURING STAGED CONSTRUCTION, SEE EROSION CONTROL AND TEMPORARY DRAINAGE PLAN.

REVISIONS	
NAME	DATE

ILLINOIS DEPARTMENT OF TRANSPORTATION
STORM WATER POLLUTION PREVENTION PLAN - 7
 FAI ROUTE 70
 SECTION 60-10K-1, 60-10HB
 MADISON COUNTY

DRAWN BY: GRH
 PLOT DATE: *DATE-TIME*

DATE-TIME
 JOB-SPEC
 *REF- 236001.dgn
 *REF- 236002.dgn
 *REF- 236003.dgn
 *REF- 236004.dgn
 *REF- 236005.dgn
 *REF- 236006.dgn
 *REF- 236007.dgn
 *REF- 236008.dgn
 *REF- 236009.dgn
 *REF- 236010.dgn
 *REF- 236011.dgn
 *REF- 236012.dgn
 *REF- 236013.dgn
 *REF- 236014.dgn
 *REF- 236015.dgn
 *REF- 236016.dgn
 *REF- 236017.dgn
 *REF- 236018.dgn
 *REF- 236019.dgn
 *REF- 236020.dgn
 *REF- 236021.dgn
 *REF- 236022.dgn
 *REF- 236023.dgn
 *REF- 236024.dgn
 *REF- 236025.dgn
 *REF- 236026.dgn
 *REF- 236027.dgn
 *REF- 236028.dgn
 *REF- 236029.dgn
 *REF- 236030.dgn
 *REF- 236031.dgn
 *REF- 236032.dgn
 *REF- 236033.dgn
 *REF- 236034.dgn
 *REF- 236035.dgn
 *REF- 236036.dgn
 *REF- 236037.dgn
 *REF- 236038.dgn
 *REF- 236039.dgn
 *REF- 236040.dgn
 *REF- 236041.dgn
 *REF- 236042.dgn
 *REF- 236043.dgn
 *REF- 236044.dgn
 *REF- 236045.dgn
 *REF- 236046.dgn
 *REF- 236047.dgn
 *REF- 236048.dgn
 *REF- 236049.dgn
 *REF- 236050.dgn
 *REF- 236051.dgn
 *REF- 236052.dgn
 *REF- 236053.dgn
 *REF- 236054.dgn
 *REF- 236055.dgn
 *REF- 236056.dgn
 *REF- 236057.dgn
 *REF- 236058.dgn
 *REF- 236059.dgn
 *REF- 236060.dgn
 *REF- 236061.dgn
 *REF- 236062.dgn
 *REF- 236063.dgn
 *REF- 236064.dgn
 *REF- 236065.dgn
 *REF- 236066.dgn
 *REF- 236067.dgn
 *REF- 236068.dgn
 *REF- 236069.dgn
 *REF- 236070.dgn
 *REF- 236071.dgn
 *REF- 236072.dgn
 *REF- 236073.dgn
 *REF- 236074.dgn
 *REF- 236075.dgn
 *REF- 236076.dgn
 *REF- 236077.dgn
 *REF- 236078.dgn
 *REF- 236079.dgn
 *REF- 236080.dgn
 *REF- 236081.dgn
 *REF- 236082.dgn
 *REF- 236083.dgn
 *REF- 236084.dgn
 *REF- 236085.dgn
 *REF- 236086.dgn
 *REF- 236087.dgn
 *REF- 236088.dgn
 *REF- 236089.dgn
 *REF- 236090.dgn
 *REF- 236091.dgn
 *REF- 236092.dgn
 *REF- 236093.dgn
 *REF- 236094.dgn
 *REF- 236095.dgn
 *REF- 236096.dgn
 *REF- 236097.dgn
 *REF- 236098.dgn
 *REF- 236099.dgn
 *REF- 236100.dgn