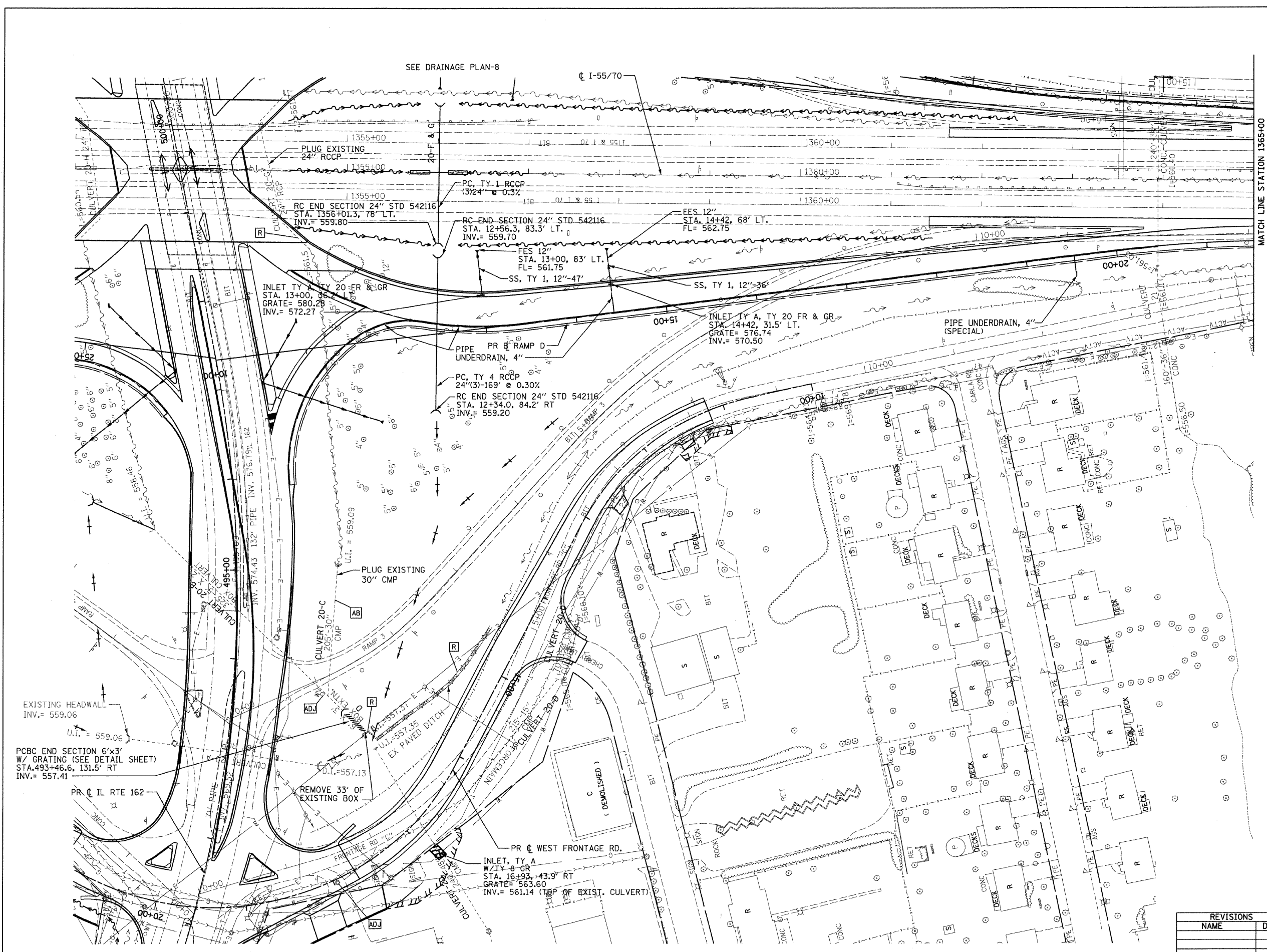


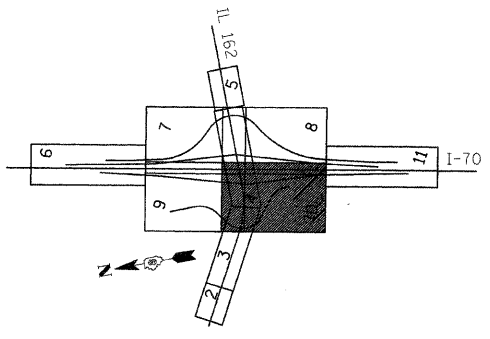
FILE ROUTE	SECTION	COUNTY	TOTAL SHEETS	SHEET NO
70		MADISON	420	113
STA. 1353+15.77		TO STA. 1365+00		
CONTRACT NO. 76709				
• 60-10K, 60-10-4HB				



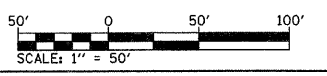
PLAN	SURVEYED	DATE
NOTE BOOK	ALLOTTED	
NO.	BY	
	CHECKED	
	BY	
	FILE NAME	



- NOTES:**
1. FOR STORM SEWER INFORMATION AT IL 162, SEE PROPOSED DRAINAGE PLAN-4.
 2. FOR DITCH PROFILES, SEE PROPOSED DRAINAGE PROFILE DRAWINGS.
 3. FOR PROPOSED SWALE INFORMATION, SEE INTERCHANGE GRADING PLAN.



KEY PLAN



ILLINOIS DEPARTMENT OF TRANSPORTATION
PROPOSED DRAINAGE PLAN - 10

FAI ROUTE 70
SECTION 60-10K, 60-10-4HB
MADISON COUNTY

REVISIONS	
NAME	DATE

DRAWN BY: GRH
PLOT DATE: *DATE-TIME*

DATE-TIME
DGN-SPEC
*REF-236c-ar-01.dgn
*REF-236c-ar-02.dgn
*REF-236c-ar-03.dgn
*REF-236c-ar-04.dgn
*REF-236c-ar-05.dgn
*REF-236c-ar-06.dgn
*REF-236c-ar-07.dgn
*REF-236c-ar-08.dgn
*REF-236c-ar-09.dgn
*REF-236c-ar-10.dgn
*REF-236c-ar-11.dgn
*REF-236c-ar-12.dgn
*REF-236c-ar-13.dgn
*REF-236c-ar-14.dgn
*REF-236c-ar-15.dgn
*REF-236c-ar-16.dgn
*REF-236c-ar-17.dgn
*REF-236c-ar-18.dgn
*REF-236c-ar-19.dgn
*REF-236c-ar-20.dgn
*REF-236c-ar-21.dgn
*REF-236c-ar-22.dgn
*REF-236c-ar-23.dgn
*REF-236c-ar-24.dgn
*REF-236c-ar-25.dgn
*REF-236c-ar-26.dgn
*REF-236c-ar-27.dgn
*REF-236c-ar-28.dgn
*REF-236c-ar-29.dgn
*REF-236c-ar-30.dgn
*REF-236c-ar-31.dgn
*REF-236c-ar-32.dgn
*REF-236c-ar-33.dgn
*REF-236c-ar-34.dgn
*REF-236c-ar-35.dgn
*REF-236c-ar-36.dgn
*REF-236c-ar-37.dgn
*REF-236c-ar-38.dgn
*REF-236c-ar-39.dgn
*REF-236c-ar-40.dgn
*REF-236c-ar-41.dgn
*REF-236c-ar-42.dgn
*REF-236c-ar-43.dgn
*REF-236c-ar-44.dgn
*REF-236c-ar-45.dgn
*REF-236c-ar-46.dgn
*REF-236c-ar-47.dgn
*REF-236c-ar-48.dgn
*REF-236c-ar-49.dgn
*REF-236c-ar-50.dgn
*REF-236c-ar-51.dgn
*REF-236c-ar-52.dgn
*REF-236c-ar-53.dgn
*REF-236c-ar-54.dgn
*REF-236c-ar-55.dgn
*REF-236c-ar-56.dgn
*REF-236c-ar-57.dgn
*REF-236c-ar-58.dgn
*REF-236c-ar-59.dgn
*REF-236c-ar-60.dgn
*REF-236c-ar-61.dgn
*REF-236c-ar-62.dgn
*REF-236c-ar-63.dgn
*REF-236c-ar-64.dgn
*REF-236c-ar-65.dgn
*REF-236c-ar-66.dgn
*REF-236c-ar-67.dgn
*REF-236c-ar-68.dgn
*REF-236c-ar-69.dgn
*REF-236c-ar-70.dgn
*REF-236c-ar-71.dgn
*REF-236c-ar-72.dgn
*REF-236c-ar-73.dgn
*REF-236c-ar-74.dgn
*REF-236c-ar-75.dgn
*REF-236c-ar-76.dgn
*REF-236c-ar-77.dgn
*REF-236c-ar-78.dgn
*REF-236c-ar-79.dgn
*REF-236c-ar-80.dgn
*REF-236c-ar-81.dgn
*REF-236c-ar-82.dgn
*REF-236c-ar-83.dgn
*REF-236c-ar-84.dgn
*REF-236c-ar-85.dgn
*REF-236c-ar-86.dgn
*REF-236c-ar-87.dgn
*REF-236c-ar-88.dgn
*REF-236c-ar-89.dgn
*REF-236c-ar-90.dgn
*REF-236c-ar-91.dgn
*REF-236c-ar-92.dgn
*REF-236c-ar-93.dgn
*REF-236c-ar-94.dgn
*REF-236c-ar-95.dgn
*REF-236c-ar-96.dgn
*REF-236c-ar-97.dgn
*REF-236c-ar-98.dgn
*REF-236c-ar-99.dgn
*REF-236c-ar-100.dgn