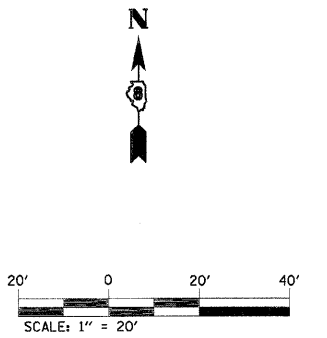
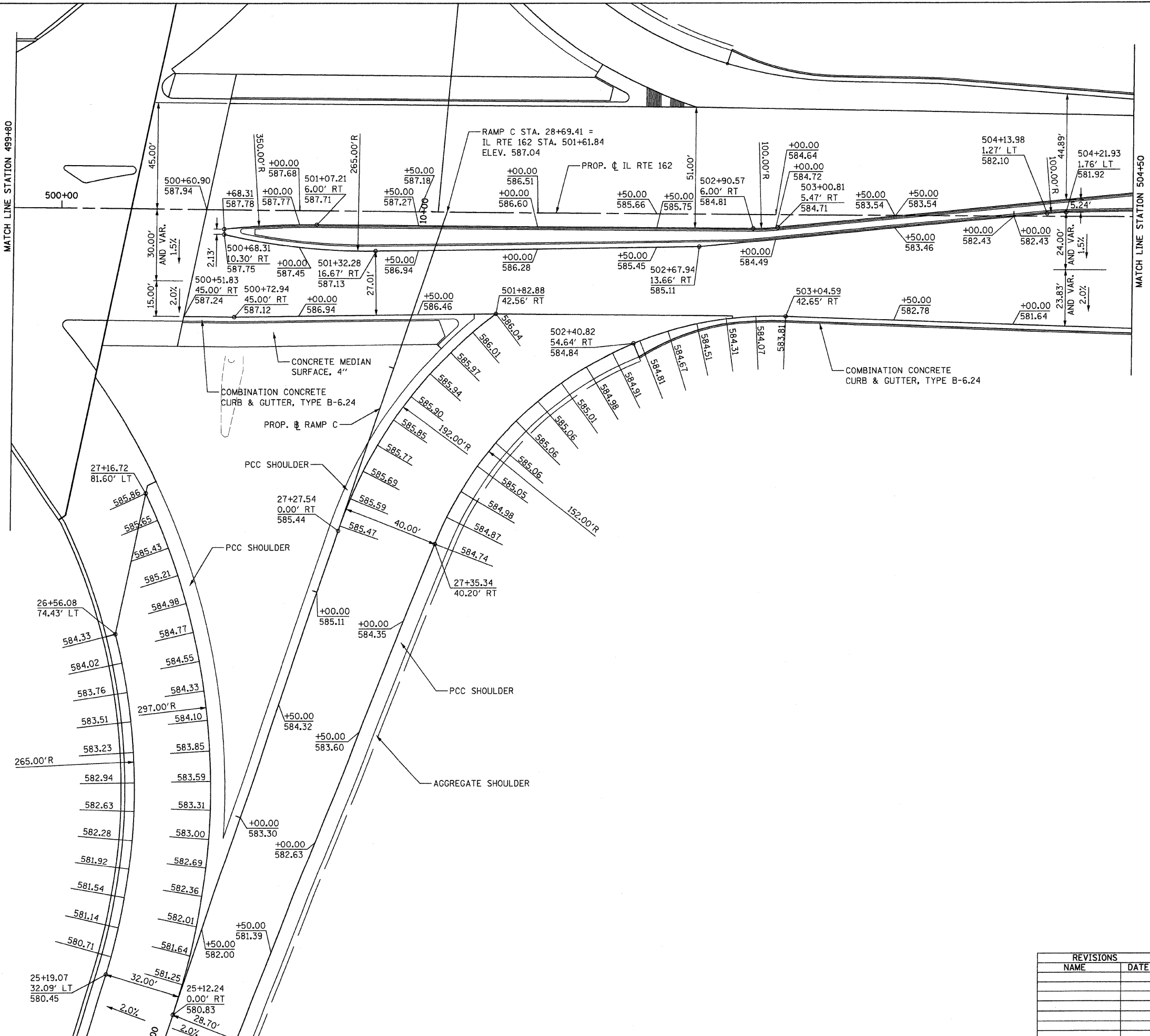


FAI ROUTE	SECTION	COUNTY	TOTAL SHEETS	SHEET NO
70	*	MADISON	420	135
STA. 499+80		TO STA. 504+50		
CONTRACT NO.: 76709				
* 60-10K-1, 60-10HB				

PLAN	SURVEYED	BY	DATE
	NOTED		
	ALIGNED		
	CHECKED		
	RT. OF WAY		
	CHECKED		
	NO.		
	DATE		



- NOTES:**
1. ELEVATIONS ALONG INTERSECTION RADII ARE SHOWN AT 12.5 FT INTERVAL.
 2. FOR MORE HORIZONTAL GEOMETRY INFO SEE INTERSECTION LAYOUT DETAILS.
 3. FOR MORE PAVEMENT SLOPE INFO SEE TYPICAL SECTION SHEETS.
 4. ALL DIMENSIONS, STATIONS AND OFFSETS ARE TO THE EDGE OF PAVEMENT UNLESS OTHERWISE NOTED.
 5. FOR MORE BRIDGE INFO SEE STRUCTURAL SHEETS.

REVISIONS	
NAME	DATE

ILLINOIS DEPARTMENT OF TRANSPORTATION
**INTERSECTION ELEVATION
 DETAILS - 3**
 FAI ROUTE 70
 SECTION 60-10K-1, 60-10HB
 MADISON COUNTY
 DRAWN BY: GRH
 PLOT DATE: *DATE-TIME*

DATE-TIME
 *REF- 236eoz01.dgn
 *REF- 236eoz02.dgn