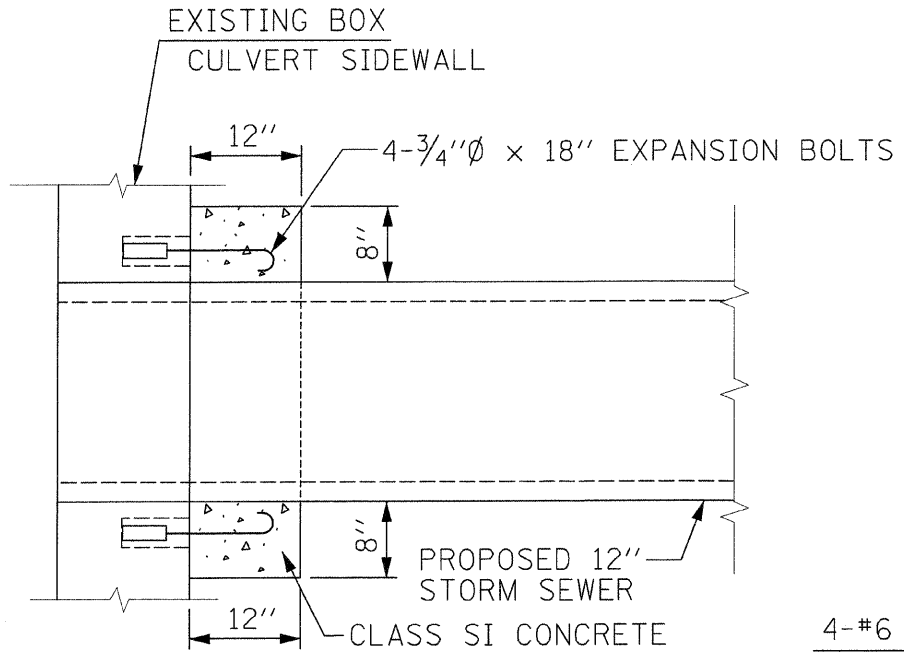
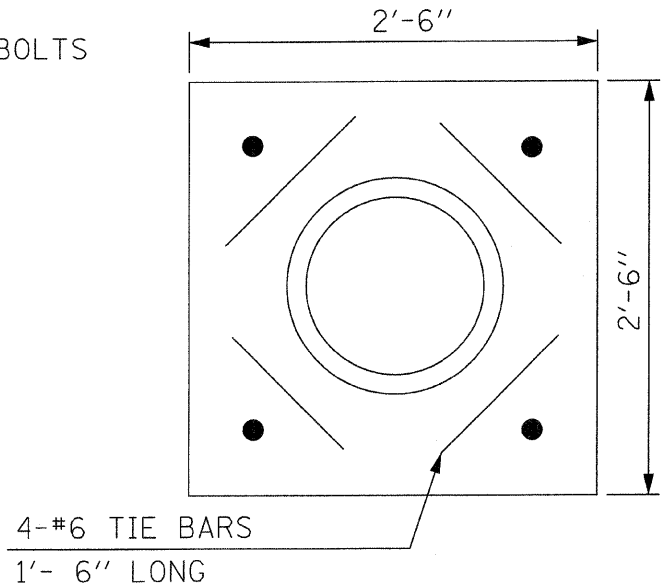


Mass of Barrel #1 = 200 lbs.
 Mass of Barrel #2 = 400 lbs.
 Mass of Barrel #3 = 700 lbs.
 Mass of Barrel #4 = 1400 lbs.

**FREE STANDING SAND-FILLED
 CONTAINER-TYPE IMPACT ATTENUATOR**
 STA. 1352+44 AND STA. 1353+88
 NOT TO SCALE



END VIEW

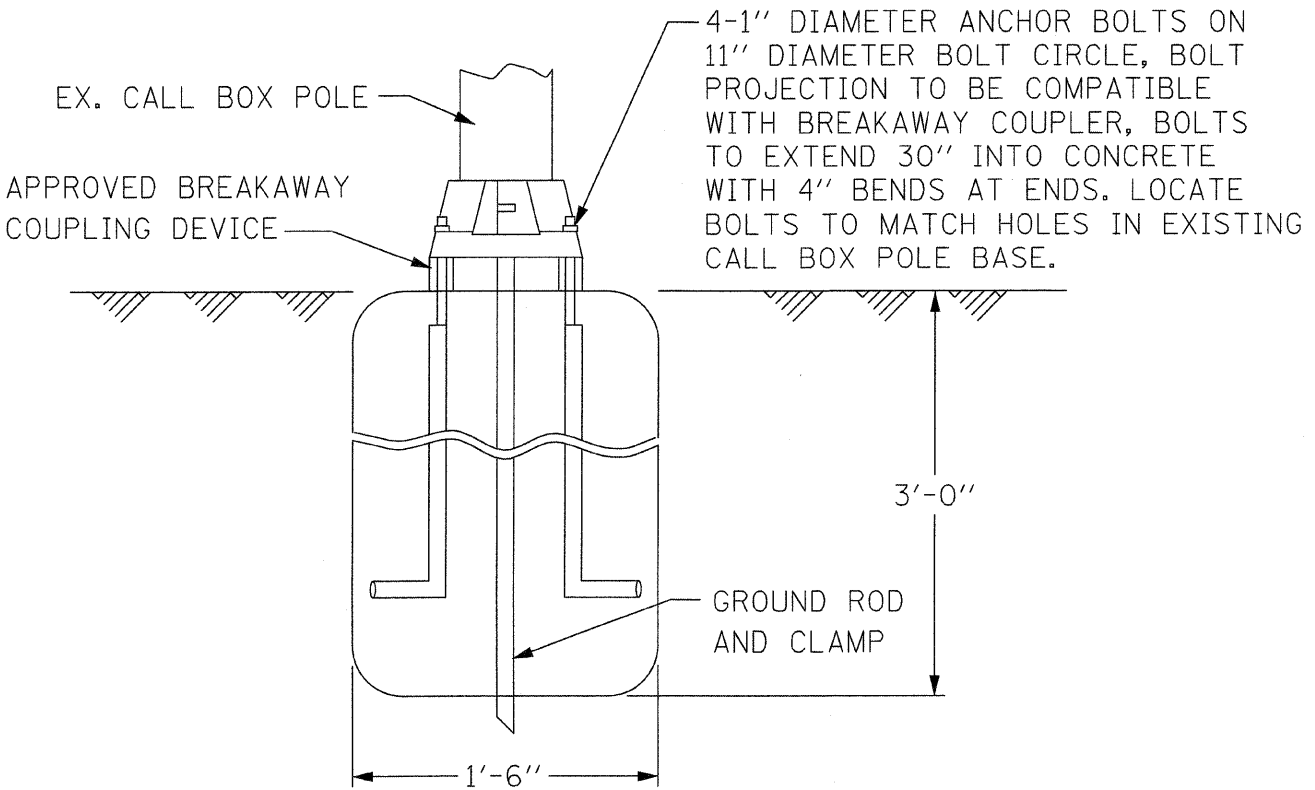


SIDE VIEW

SPAN X RISE	CL SI CONCRETE CU YD (EST)
5' x 2'	0.23

THE CONCRETE COLLAR, AS DETAILED, SHALL BE USED TO CONNECT PROP. 12" STORM SEWER TO THE EXISTING 5' x 2' BOX CULVERT. CLASS SI CONCRETE SHALL BE USED THROUGHOUT.

DETAILS OF CONCRETE COLLAR
 NOT TO SCALE



CALL BOX FOUNDATION DETAIL
 NOT TO SCALE

REVISIONS	
NAME	DATE

ILLINOIS DEPARTMENT OF TRANSPORTATION

DETAILS

FAI ROUTE 70
 SECTION 60-10K-1, 60-10HB
 MADISON COUNTY

DRAWN BY: GRH

PLOT DATE: *DATE-TIME*

PLAN SURVEYED BY: _____ DATE: _____
 NOTE BOOK NO. _____
 ALIGNED CHECKED BY: _____
 AND FILE NAME: _____

DATE-TIME
 PLAN-SPEC
 SHEET
 REF