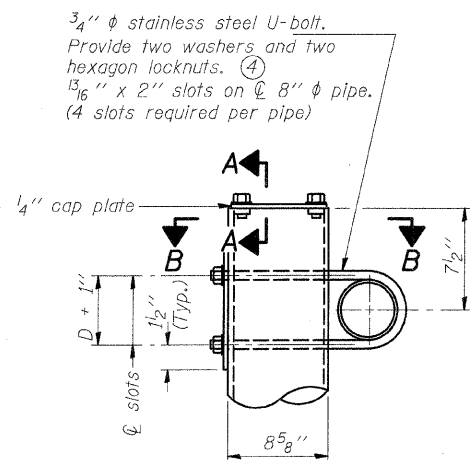
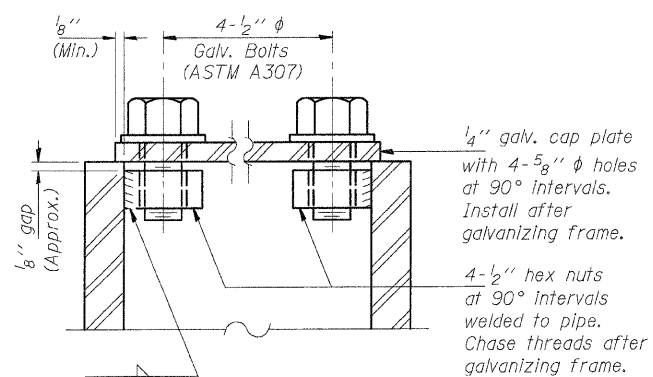


STATE OF ILLINOIS  
DEPARTMENT OF TRANSPORTATION

ROUTE NO.	SECTION	COUNTY	TOTAL SHEETS	SHEET NO.	SHEET NO.
70	#	MADISON	420	171	- SHEETS
FED. ROAD DIST. NO. 6 ILLINOIS FED. AID PROJECT -					
• 60-10K-1, 60-10HB					

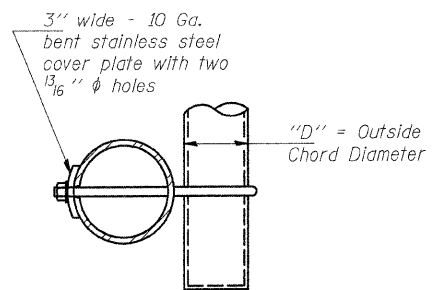


DETAIL A

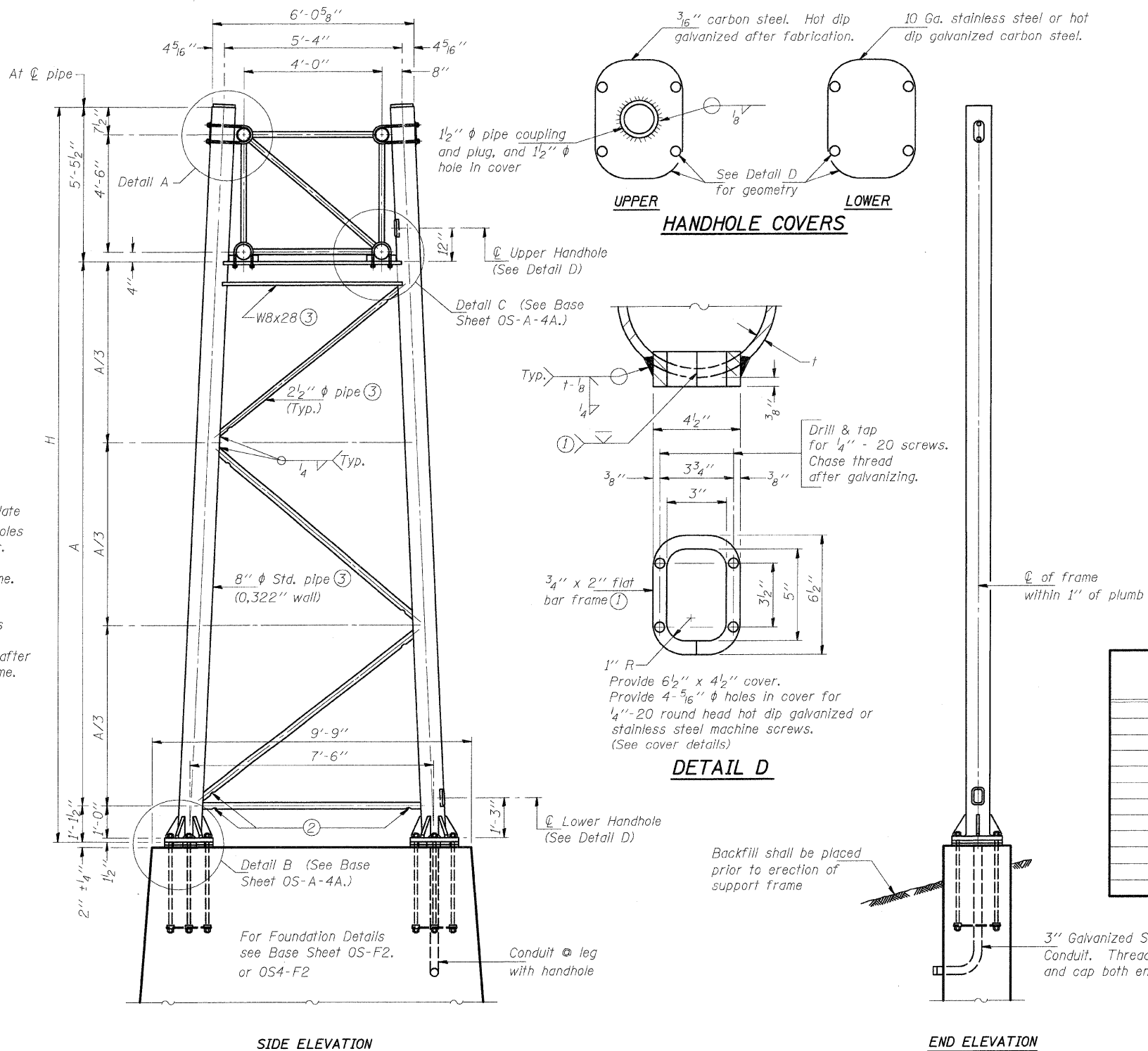


SECTION A-A

As an alternate to bolts, may use galvanized drive-fit caps installed after galvanizing frame.



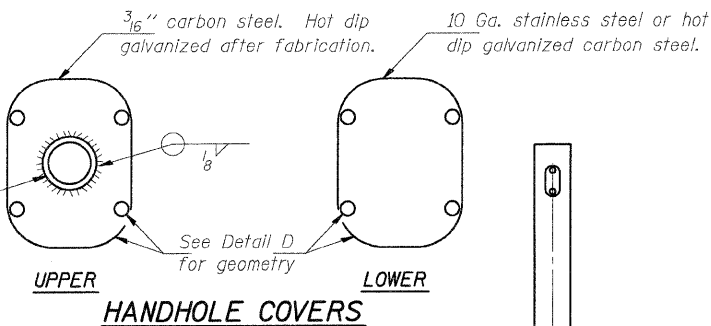
SECTION B-B



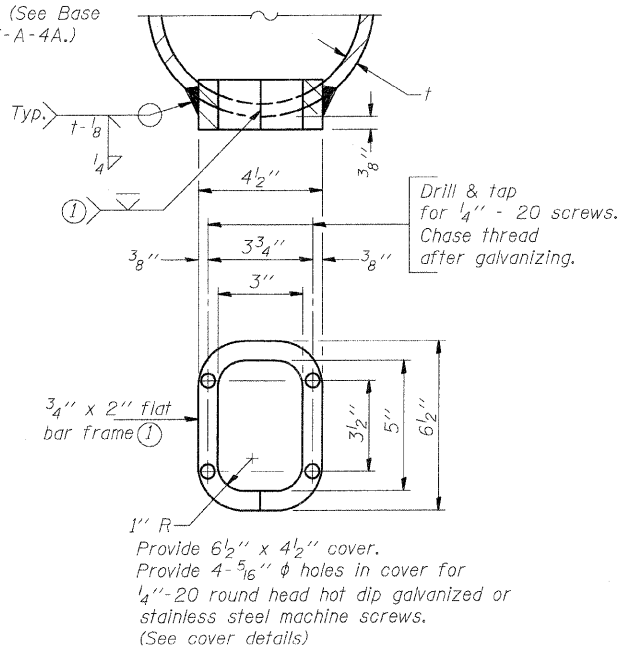
SIDE ELEVATION

END ELEVATION

8" φ PIPE TRUSS SUPPORT FRAME



HANDHOLE COVERS



DETAIL D

Support Design Loads: See Base Sheet OS-A-1 for design and loading criteria.  
Load combinations checked include deadload plus:  
a) 100% wind normal to sign, 20% parallel to sign  
b) 60% wind normal to sign, 30% parallel to sign

- In lieu of fabricated handhole frame as shown, may cut from 2" plate (rolling direction vertical). All cut faces to be ground to ANSI Roughness of 500  $\sqrt{in}$  or less.
- Galvanizing vent holes of adequate size shall be provided on underside at each end of bracing pipes. Alternately, holes may be provided in wall of pipe column. All vent holes shall be drilled and de-burred. (Typ.)
- Steel pipe, plate, carbon steel handhole covers and rolled sections shall be hot dip galvanized after fabrication. Painting is not permitted. See Base Sheet OS-A-1.
- See General Notes for fasteners.
- Dimensions shown are based on selection criteria in the Sign Structures Manual. Nonstandard applications must have dimensions verified or amended as appropriate.

Structure Number	Station	Support		H	A
		Left	Right		
8S0601070L018.3	1337+90	X	X	27'-5 1/2"	20'-10 1/2"
				27'-1"	20'-6"
8S0601070R017.7	1368+72	X	X	26'-7"	20'-0"

OVERHEAD SIGN STRUCTURES  
SUPPORT FRAME for TYPE I-A ALUMINUM TRUSS

FAI ROUTE 70  
SECTION 60-10K-1, 60-10-4HB  
MADISON COUNTY

DESIGNED - BTO	20
CHECKED - JAN	EXAMINED
DRAWN - BTO	PASSED
CHECKED - JAN	

ENGINEER OF STRUCTURAL SERVICES  
ENGINEER OF BRIDGES AND STRUCTURES

NUMBER	REVISION	DATE