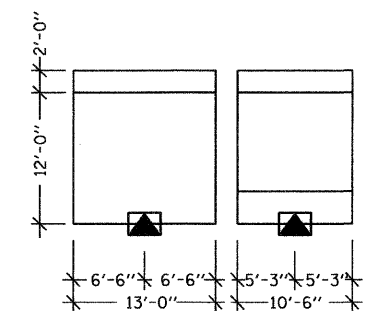
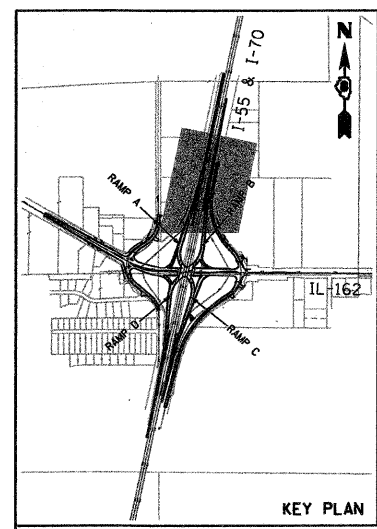


SECTION	COUNTY	TOTAL SHEETS	SHEET NO
60-10 (K-1,HB)	MADISON	420	184
STA. TO STA.	CONTRACT NO.: 76709		

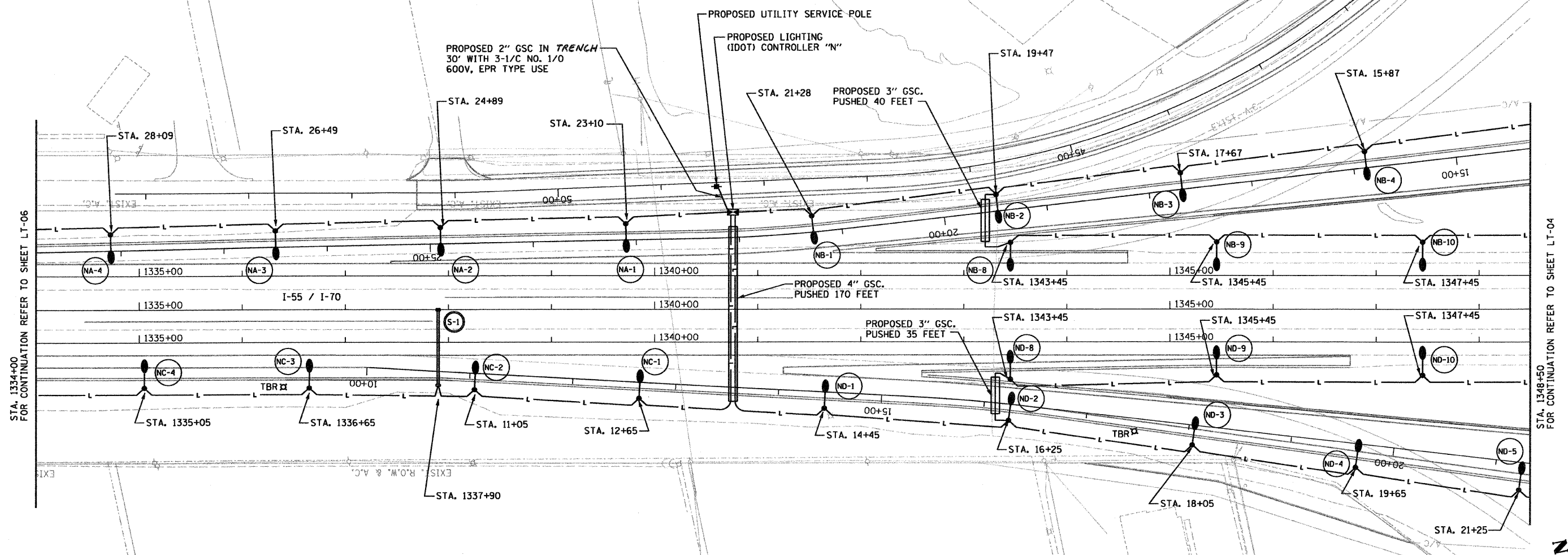
NOTES:
 1. ALL UNIT DUCT ON THIS SHEET SHALL BE 4" (2 * 4 XLP, 1 * 4 XLPG, 1.OP) UNLESS NOTED OTHERWISE.

LEGEND
 TBR - TO BE REMOVED
 REMOVE POLE
 REMOVE AND SALVAGE LUMINAIRE
 REMOVE FOUNDATION



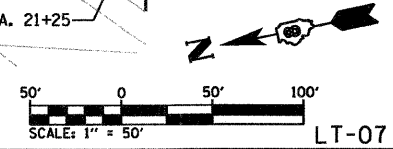
SIGN S-1 - SOUTHBOUND I-55/70
 NOT TO SCALE

PLAN	DATE	BY
REVISED		
NOTED		
NO.		



STA. 1334+00
 FOR CONTINUATION REFER TO SHEET LT-06

STA. 1348+50
 FOR CONTINUATION REFER TO SHEET LT-04



REVISIONS	
NAME	DATE

ILLINOIS DEPARTMENT OF TRANSPORTATION
PROPOSED ROADWAY LIGHTING PLAN
 I-55/70 STA. 1334+00 TO STA. 1348+50
 FAI ROUTE 70
 SECTION 60-10K-1, 60-10HB
 MADISON COUNTY
 DRAWN BY: RPJ CHECKED BY: A. OSHANA, P.E.

XXXXXXX - IDOT IL 162 over 1-55,70 revisions
 236-LT-07.dgn
 1/28/2009
 1:32:12 PM
 Robert T. Swanson