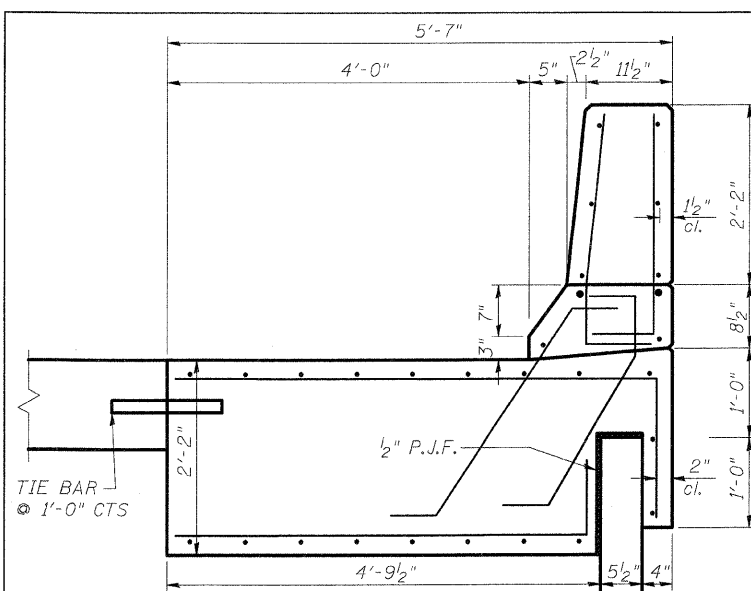


F.A.I. RTE.	SECTION	COUNTY	TOTAL SHEETS	SHEET NO.
70	*	MADISON	420	212
STA.		TO STA.		
FED. ROAD DIST. NO.	ILLINOIS	FED. AID PROJECT		
60-10K-1, 60-10HB		CONTRACT NO. 76709		

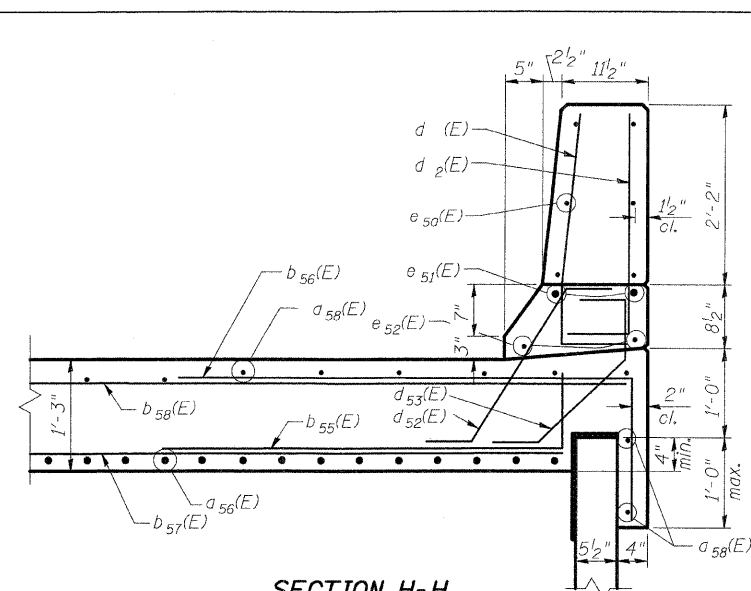
**BILL OF MATERIAL
RAMP "A"**

Bar	No.	Size	Length	Shape
a ₅₂ (E)	67	#4	6'-8"	┌──┐
a ₅₃ (E)	67	#4	5'-8"	┌──┐
a ₅₄ (E)	14	#9	25'-3"	┌──┐
a ₅₅ (E)	36	#9	16'-3"	┌──┐
a ₅₆ (E)	88	#9	34'-9"	┌──┐
a ₅₇ (E)	72	#5	22'-7"	┌──┐
a ₅₈ (E)	27	#5	27'-0"	┌──┐
a ₅₉ (E)	14	#4	4'-8"	┌──┐
a ₆₀ (E)	14	#4	4'-2"	┌──┐
a ₆₁ (E)	6	#4	5'-4"	┌──┐
b ₅₅ (E)	52	#5	5'-3"	┌──┐
b ₅₆ (E)	52	#5	6'-8"	┌──┐
b ₅₇ (E)	90	#5	27'-11"	┌──┐
b ₅₈ (E)	24	#4	27'-7"	┌──┐
b ₅₉ (E)	10	#5	6'-4"	┌──┐
b ₆₀ (E)	4	#4	5'-10"	┌──┐
d(E)	59	#5	3'-2"	┌──┐
d ₂ (E)	59	#4	3'-2"	┌──┐
d ₅₂ (E)	57	#5	3'-0"	┌──┐
d ₅₃ (E)	57	#4	3'-0"	┌──┐
e ₅₀ (E)	12	#4	16'-10"	┌──┐
e ₅₁ (E)	4	#8	28'-7"	┌──┐
e ₅₂ (E)	4	#5	27'-5"	┌──┐
e ₅₉ (E)	6	#4	18'-4"	┌──┐
h ₅₂ (E)	6	#5	4'-4"	┌──┐
h ₅₃ (E)	72	#5	22'-8"	┌──┐
h ₅₄ (E)	12	#5	8'-11"	┌──┐
h ₅₅ (E)	18	#5	2'-4"	┌──┐
h ₅₆ (E)	24	#5	4'-6"	┌──┐
h ₅₈ (E)	48	#5	4'-4"	┌──┐
* Reinforcement Bars, Epoxy Coated		Pound	23,950	
* Concrete		Cu. Yd.	120	
* Preformed Joint Seal		Foot	74	
* Concrete Pad		Sq. Yd.	49	
* Polyethylene Bond Breaker		Sq. Yd.	49	
* Bridge Approach Pavement (Special)		Sq. Yd.	238	

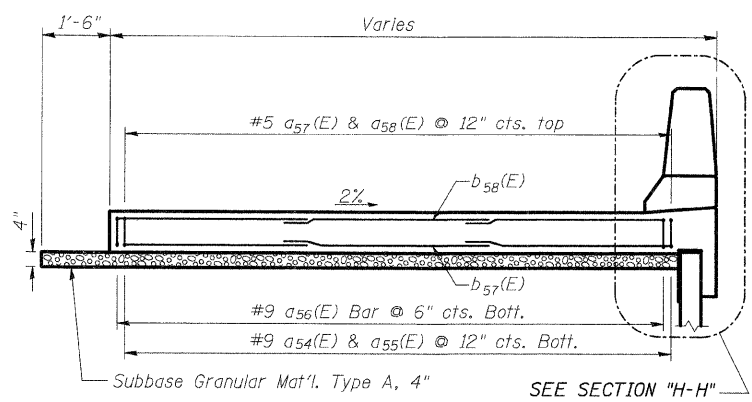
* Items Included in the cost for Bridge Approach Pavement, (Special)



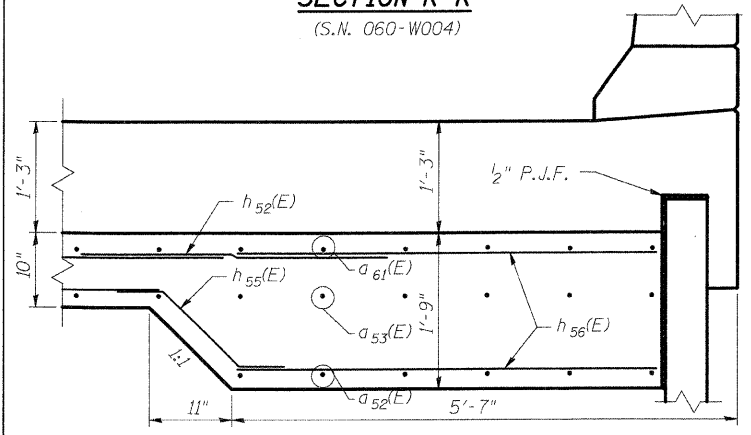
SECTION K-K
(S.N. 060-W004)



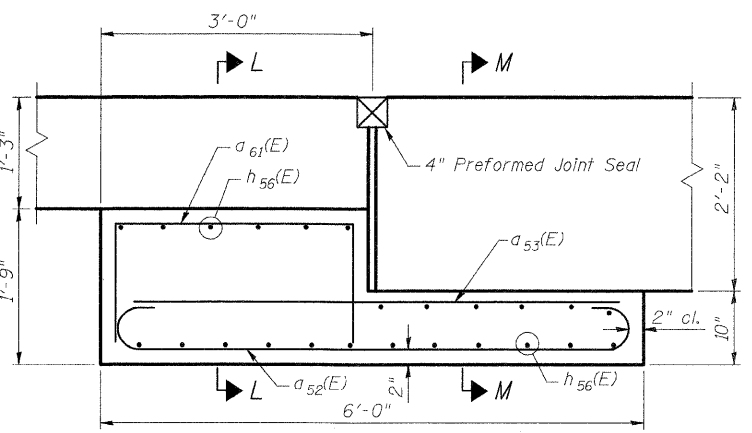
SECTION H-H



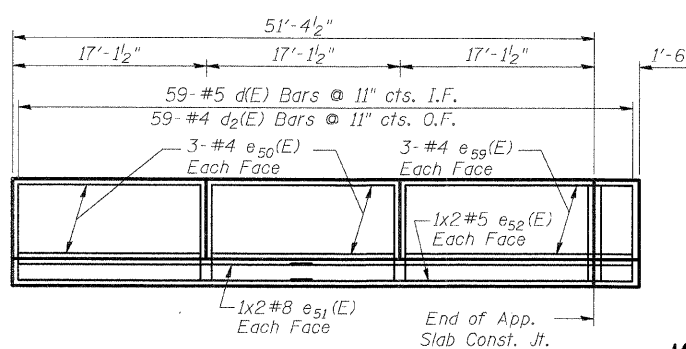
SECTION B-B



SECTION L-L



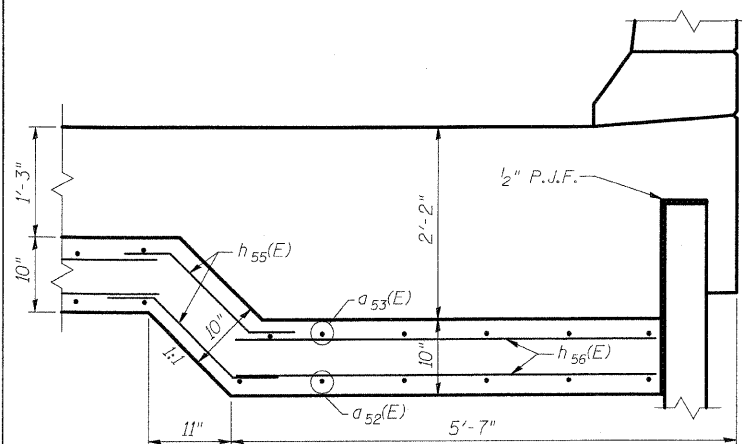
SECTION E-E



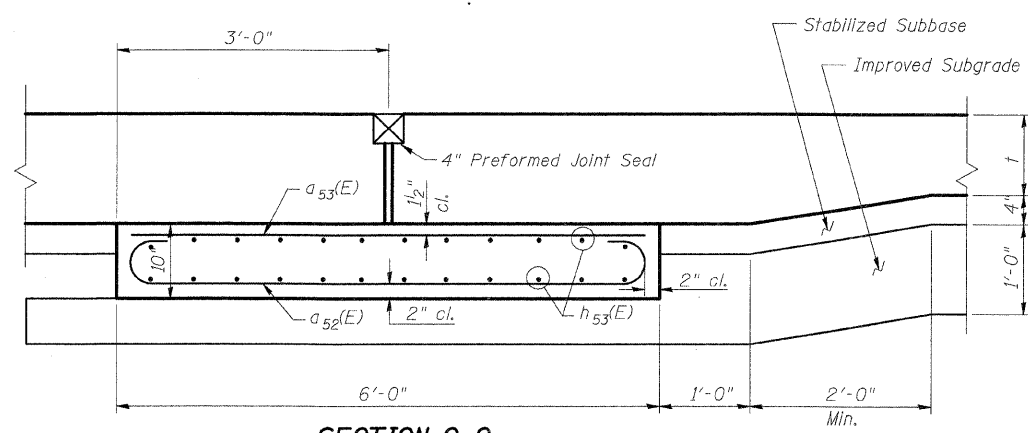
**INSIDE PARAPET ELEVATION AT RAMP "A"
APPROACH SLAB (SPECIAL)**

MINIMUM BAR LAP

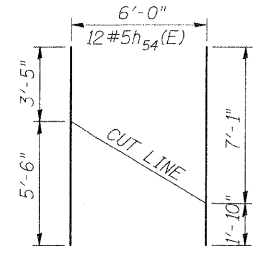
- #4 bars = 1'-8"
- #5 bars = 2'-2"
- #9 bars = 5'-9"



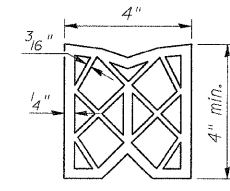
SECTION M-M



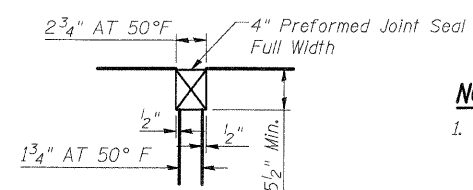
SECTION C-C



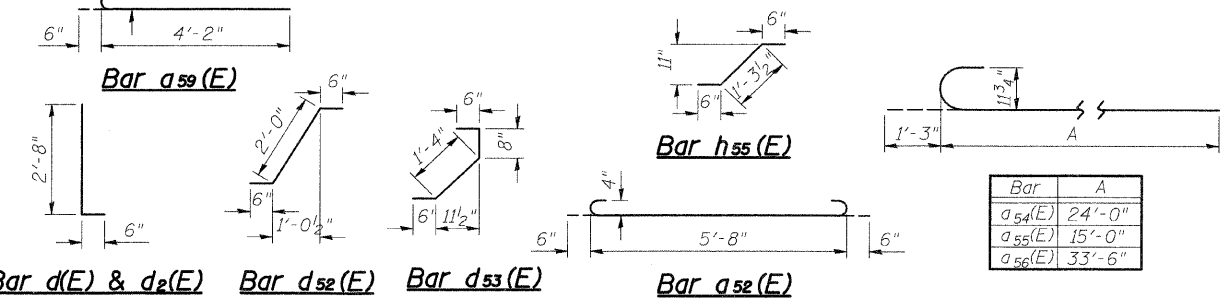
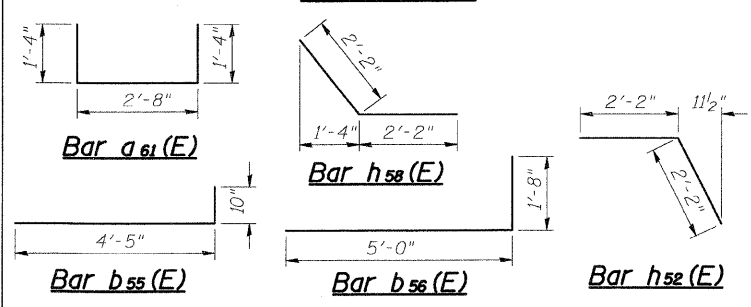
**Bar h₅₄(E)
CUTTING DIAGRAM**



PREFORMED JOINT SEAL



DETAIL 1



Bar	A
a ₅₄ (E)	24'-0"
a ₅₅ (E)	15'-0"
a ₅₆ (E)	33'-6"

SHT. 2 OF 2

STV Incorporated
Engineers/Architects/Planners/Construction Managers
200 W. Monroe Street, Suite 1650
Chicago, IL 60606-5013
312/933-0655, FAX 312/933-0661

REVISIONS	
NAME	DATE

ILLINOIS DEPARTMENT OF TRANSPORTATION
IL ROUTE 162 OVER I-55/70 IN TROY
F.A.I. ROUTE 70 SECTION 60-10K-1, 60-10HB
MADISON COUNTY STATION 499+48.35
STRUCTURE NO. 060-0338

RAMP A APPROACH SLAB DETAILS (SPECIAL)

DESIGNED: JAW DRAWN: BTO
CHECKED: BTO CHECKED: JAN
DATE: 4/06