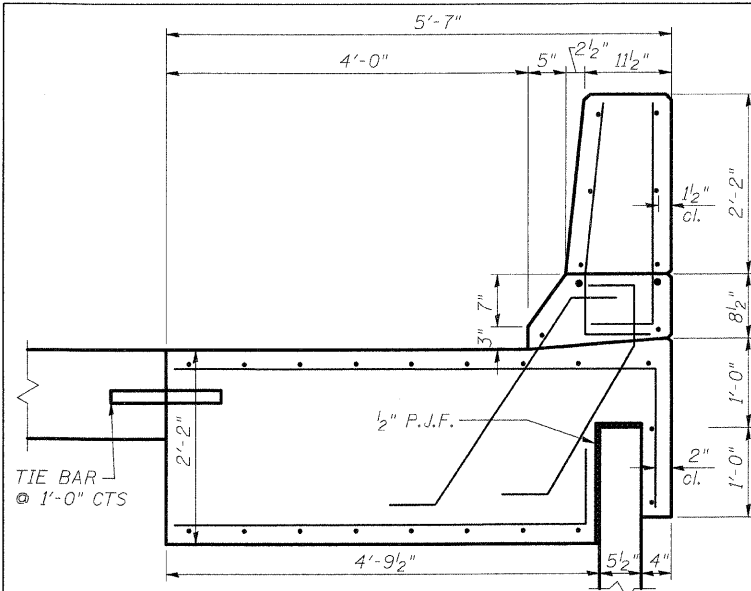


F.A.I. RTE.	SECTION	COUNTY	TOTAL SHEETS	SHEET NO.
70		MADISON	420	214
STA.	TO STA.			
FED. ROAD DIST. NO.	ILLINOIS	FED. AID PROJECT		
• 60-10K-1, 60-10HB CONTRACT NO. 76709				

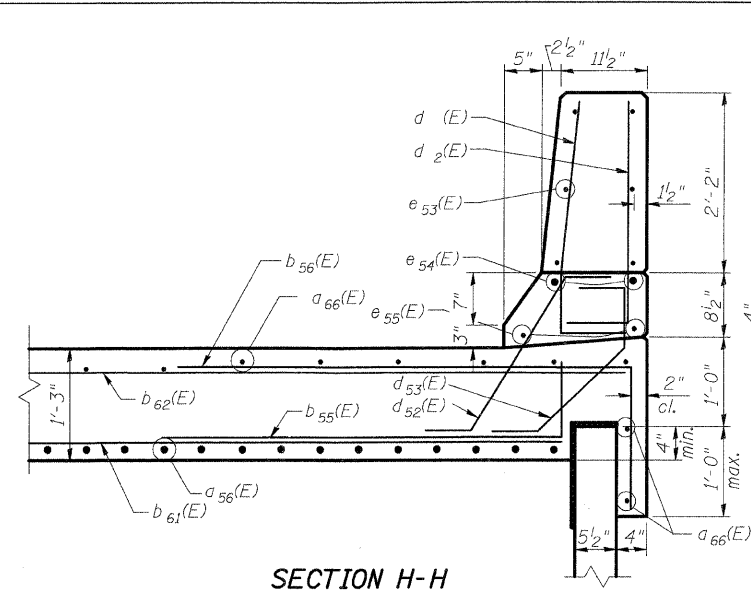
BILL OF MATERIAL RAMP "B"

Bar	No.	Size	Length	Shape
a ₅₂ (E)	76	#4	6'-8"	┌──┐
a ₅₃ (E)	76	#4	5'-8"	┌──┐
a ₅₆ (E)	88	#9	34'-9"	┌──┐
a ₅₉ (E)	14	#4	4'-8"	┌──┐
a ₆₀ (E)	14	#4	4'-2"	┌──┐
a ₆₁ (E)	6	#4	4'-8"	┌──┐
a ₆₂ (E)	37	#9	19'-3"	┌──┐
a ₆₃ (E)	12	#9	32'-3"	┌──┐
a ₆₄ (E)	5	#9	25'-11"	┌──┐
a ₆₅ (E)	74	#5	23'-3"	┌──┐
a ₆₆ (E)	31	#5	31'-3"	┌──┐
b ₅₅ (E)	60	#5	5'-3"	┌──┐
b ₅₆ (E)	60	#5	6'-8"	┌──┐
b ₅₉ (E)	10	#5	6'-4"	┌──┐
b ₆₀ (E)	4	#4	5'-10"	┌──┐
b ₆₁ (E)	90	#5	31'-3"	┌──┐
b ₆₂ (E)	24	#4	31'-0"	┌──┐
d(E)	68	#5	3'-2"	┌──┐
d ₂ (E)	68	#4	3'-2"	┌──┐
d ₅₂ (E)	66	#5	3'-0"	┌──┐
d ₅₃ (E)	66	#4	3'-0"	┌──┐
e ₅₃ (E)	12	#4	19'-7"	┌──┐
e ₅₄ (E)	4	#8	32'-8"	┌──┐
e ₅₅ (E)	4	#5	31'-6"	┌──┐
e ₆₀ (E)	6	#4	21'-1"	┌──┐
h ₅₀ (E)	6	#5	4'-4"	┌──┐
h ₅₁ (E)	24	#5	4'-4"	┌──┐
h ₅₄ (E)	12	#5	8'-11"	┌──┐
h ₅₅ (E)	18	#5	2'-1"	┌──┐
h ₅₆ (E)	24	#5	4'-6"	┌──┐
h ₅₇ (E)	72	#5	25'-8"	┌──┐
* Reinforcement Bars, Epoxy Coated			Pound	26,130
* Concrete			Cu. Yd.	135.4
* Preformed Joint Seal			Foot	83
* Concrete Pad			Sq. Yd.	55
* Polyethylene Bond Breaker			Sq. Yd.	55
Bridge Approach Pavement (Special)			Sq. Yd.	270

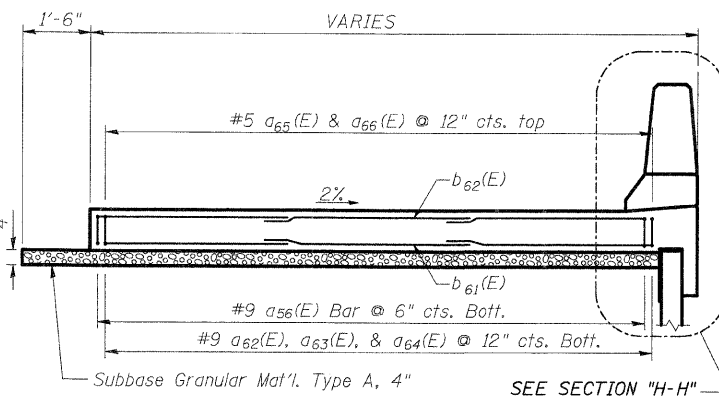
* Items included in the cost for Bridge Approach Pavement, (Special)



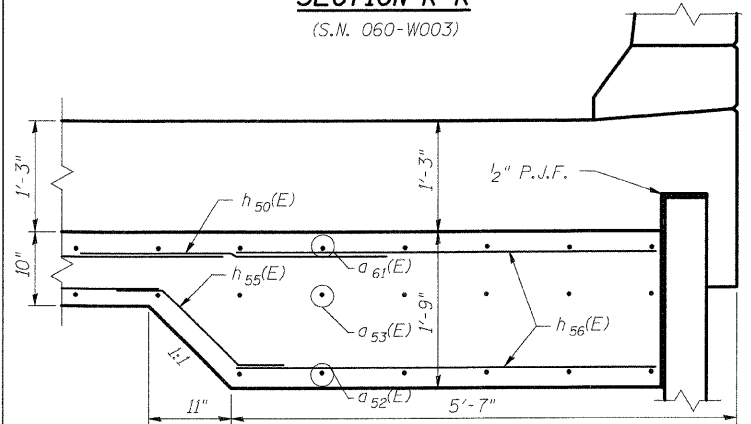
SECTION K-K
(S.N. 060-W003)



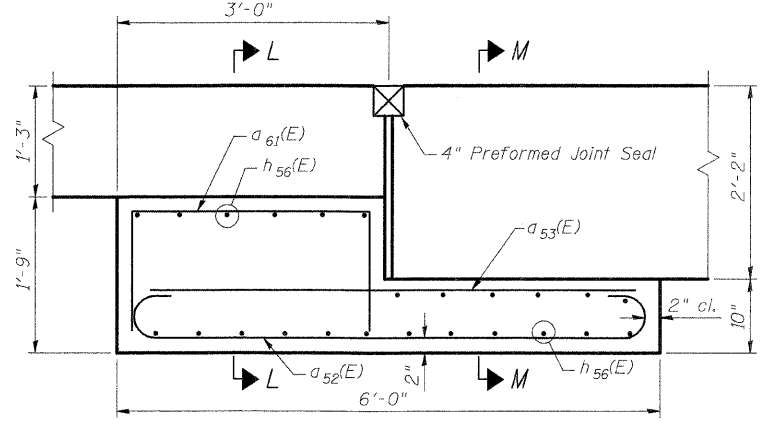
SECTION H-H



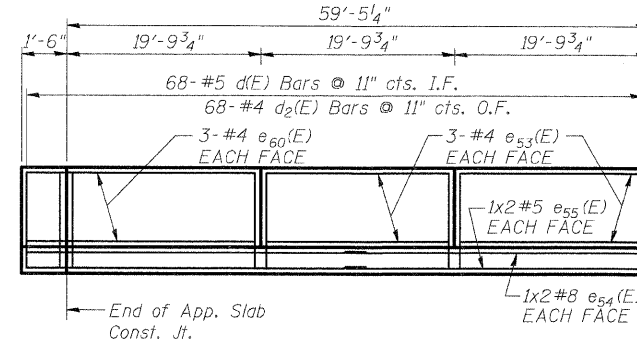
SECTION B-B



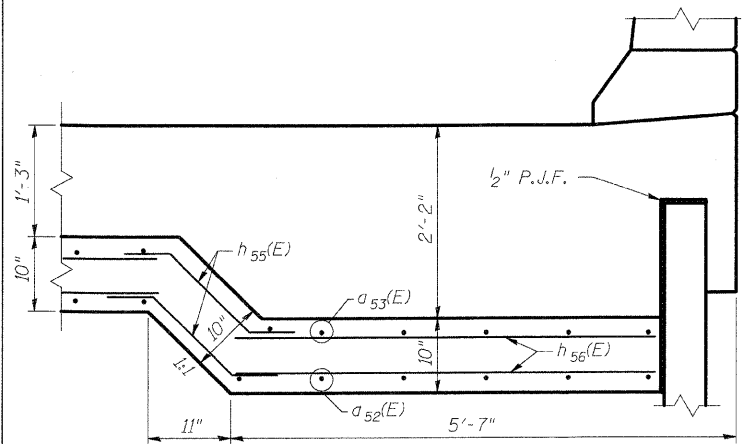
SECTION L-L



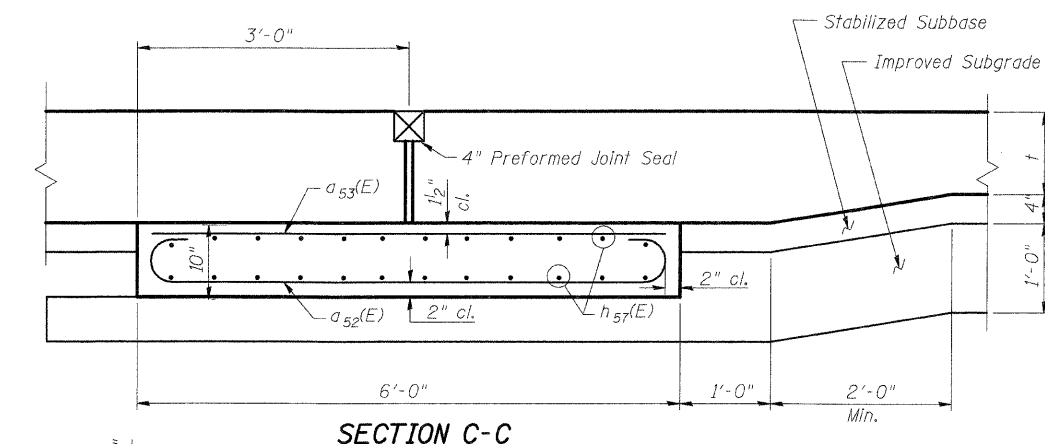
SECTION E-E



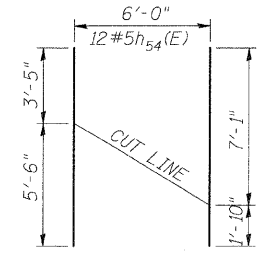
INSIDE PARAPET ELEVATION AT RAMP "B" APPROACH SLAB (SPECIAL)



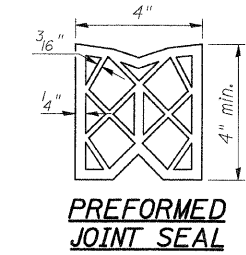
SECTION M-M



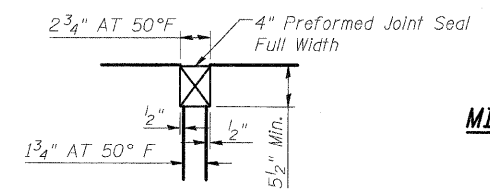
SECTION C-C



Bar h₅₄(E) CUTTING DIAGRAM



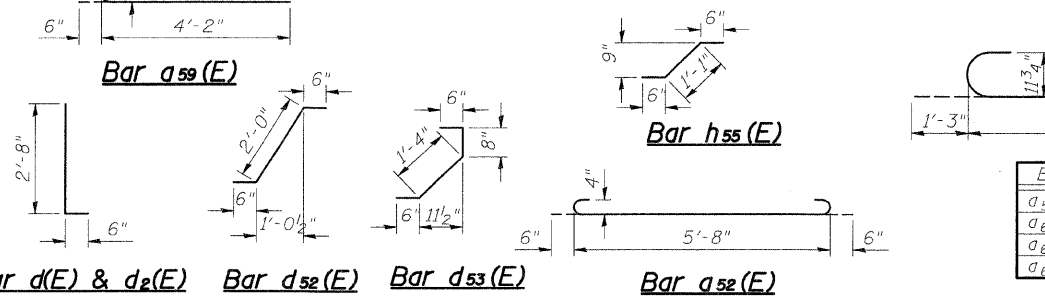
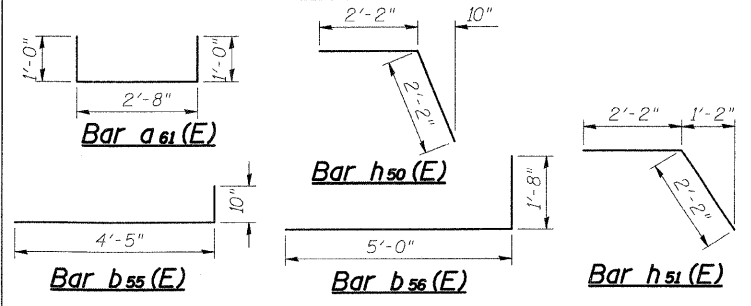
PREFORMED JOINT SEAL



DETAIL 1

MINIMUM BAR LAP

#4 bars = 1'-8"
#5 bars = 2'-2"
#9 bars = 5'-9"



Bar	A
a ₅₆ (E)	33'-6"
a ₆₂ (E)	18'-0"
a ₆₃ (E)	31'-0"
a ₆₄ (E)	24'-8"

STV Incorporated
Engineers/Architects/Planners/Construction Managers
200 W. Monroe Street, Suite 1650
Chicago, IL 60606-2015
312.553-9655, FAX: 312.553-0661

SHT. 2 of 2

REVISIONS	
NAME	DATE

ILLINOIS DEPARTMENT OF TRANSPORTATION
IL ROUTE 162 OVER I-55/70 IN TROY
F.A.I. ROUTE 70 SECTION 60-10K-1, 60-10HB
MADISON COUNTY STATION 499+48.35
STRUCTURE NO. 060-0338
RAMP B APPROACH SLAB DETAILS (SPECIAL)
DESIGNED: JAW
CHECKED: BTO
DATE: 4/06
DRAWN: BTO
CHECKED: JAN