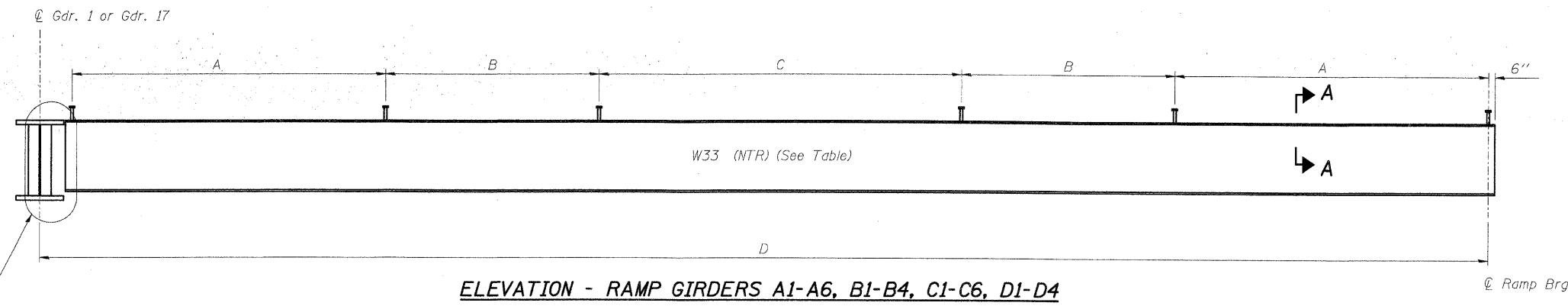


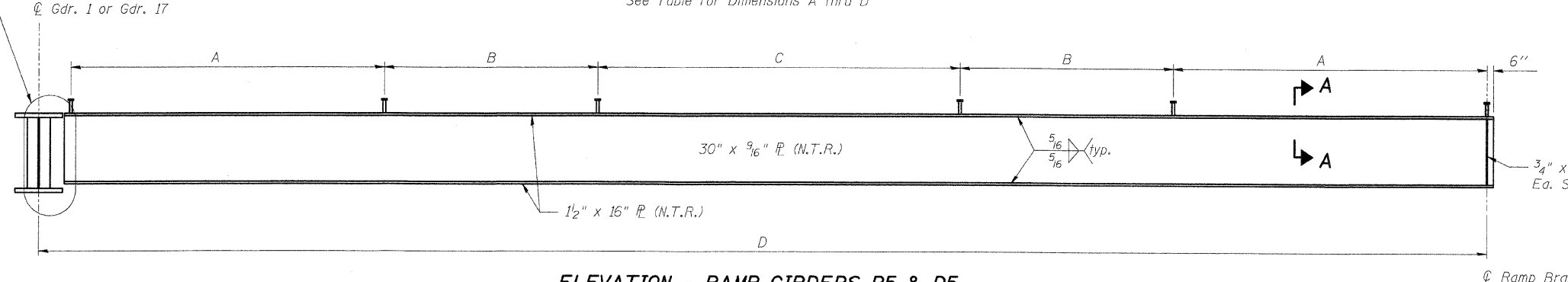
F.A.I. RTE.	SECTION	COUNTY	TOTAL SHEETS	SHEET NO.
TO 60-10K-1,60-10HB	MADISON	420	262	
STA.	TO STA.			
FED. ROAD DIST. NO.	ILLINOIS FED. AID PROJECT			

CONTRACT NO. 76709



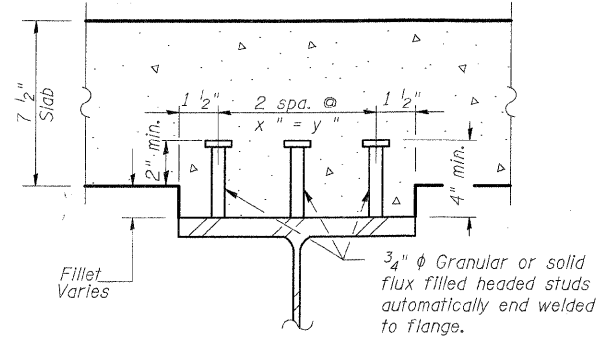
ELEVATION - RAMP GIRDERS A1-A6, B1-B4, C1-C6, D1-D4

See Table for Dimensions A thru D



ELEVATION - RAMP GIRDERS B5 & D5

See Table for Dimensions A thru D



SECTION A-A

SIZE	x	y
W33x118	4 1/4"	8 1/2"
W33x152	4 1/4"	8 1/2"
33" P.G.	6 1/2"	13"

RAMP GIRDERS

GIRDER	SIZE	A	B	C	D
A1	W33x118	3 sp. @ 14" = 3'-6"	-	-	8'-8 5/8"
A2	W33x118	12 sp. @ 4" = 4'-0"	10 sp. @ 4" = 3'-4"	10 sp. @ 5" = 4'-2"	21'-1 3/4"
A3	W33x118	10 sp. @ 6" = 5'-0"	11 sp. @ 7" = 6'-5"	14 sp. @ 7" = 8'-2"	33'-6 7/8"
A4	W33x118	20 sp. @ 6" = 10'-0"	6 sp. @ 10" = 5'-0"	10 sp. @ 10" = 8'-4"	45'-11 7/8"
A5	W33x118	25 sp. @ 6" = 12'-6"	14 sp. @ 8" = 9'-4"	13 sp. @ 11" = 11'-11"	58'-5"
A6	W33x152	30 sp. @ 6" = 15'-0"	18 sp. @ 8" = 12'-0"	14 sp. @ 12" = 14'-0"	70'-10 1/8"

GIRDER	SIZE	A	B	C	D
B1	W33x118	5 sp. @ 12" = 5'-0"	-	-	13'-2 1/4"
B2	W33x118	11 sp. @ 6" = 5'-6"	11 sp. @ 6" = 5'-6"	11 sp. @ 6" = 5'-6"	30'-3 1/2"
B3	W33x118	22 sp. @ 7" = 12'-10"	8 sp. @ 10" = 6'-8"	6 sp. @ 10" = 5'-0"	47'-4 3/4"
B4	W33x152	25 sp. @ 7" = 14'-7"	12 sp. @ 9" = 9'-0"	14 sp. @ 12" = 14'-0"	64'-6"
B5	P.G.	30 sp. @ 7" = 17'-6"	15 sp. @ 10" = 12'-6"	15 sp. @ 14" = 17'-6"	81'-7 1/4"

GIRDER	SIZE	A	B	C	D
C1	W33x118	4 sp. @ 12" = 4'-0"	-	-	9'-11"
C2	W33x118	12 sp. @ 4" = 4'-0"	10 sp. @ 5" = 4'-2"	9 sp. @ 5" = 3'-9"	22'-4 1/8"
C3	W33x118	10 sp. @ 6" = 5'-0"	11 sp. @ 7" = 6'-5"	16 sp. @ 7" = 9'-4"	34'-9 1/8"
C4	W33x118	20 sp. @ 6" = 10'-0"	12 sp. @ 8" = 8'-0"	10 sp. @ 10" = 8'-4"	47'-2 1/4"
C5	W33x118	25 sp. @ 6" = 12'-6"	14 sp. @ 8" = 9'-4"	14 sp. @ 11" = 12'-10"	59'-7 3/8"
C6	W33x152	30 sp. @ 6" = 15'-0"	18 sp. @ 8" = 12'-0"	15 sp. @ 12" = 15'-0"	72'-0 3/8"

GIRDER	SIZE	A	B	C	D
D1	W33x118	5 sp. @ 12" = 5'-0"	-	-	13'-2 3/8"
D2	W33x118	11 sp. @ 6" = 5'-6"	11 sp. @ 6" = 5'-6"	11 sp. @ 6" = 5'-6"	30'-3 5/8"
D3	W33x118	22 sp. @ 7" = 12'-10"	8 sp. @ 10" = 6'-8"	6 sp. @ 10" = 5'-0"	47'-4 7/8"
D4	W33x152	25 sp. @ 7" = 14'-7"	12 sp. @ 9" = 9'-0"	14 sp. @ 12" = 14'-0"	64'-6 1/8"
D5	P.G.	30 sp. @ 7" = 17'-6"	15 sp. @ 10" = 12'-6"	15 sp. @ 14" = 17'-6"	81'-7 3/8"

TOP OF GIRDER ELEVATIONS

(For Fabrication Only)

GIRDER	W. ABUT. BRG.	℄ GIRDER 1
A1	585.771	585.928
A2	585.581	585.985
A3	585.390	586.036
A4	585.199	586.082
A5	585.007	586.122
A6	584.816	586.156

GIRDER	E. ABUT. BRG.	℄ GIRDER 17
C1	586.066	586.219
C2	585.865	586.232
C3	585.665	586.238
C4	585.463	586.239
C5	585.262	586.234
C6	585.060	586.224

GIRDER	E. ABUT. BRG.	℄ GIRDER 1
B1	585.965	586.150
B2	585.740	586.185
B3	585.515	586.212
B4	585.290	586.229

GIRDER	W. ABUT. BRG.	℄ GIRDER 17
D1	585.500	585.736
D2	585.265	585.825
D3	585.030	585.905
D4	584.794	585.977

TOP OF WEB ELEVATIONS

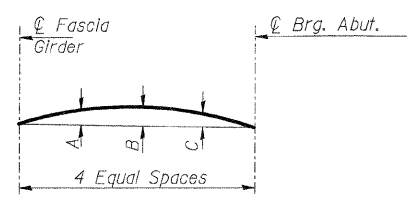
(For Fabrication Only)

GIRDER	E. ABUT. BRG.	℄ GIRDER 1
B5	584.918	586.113

GIRDER	W. ABUT. BRG.	℄ GIRDER 17
D5	584.412	585.915

BILL OF MATERIAL

Item	Unit	Total
Stud Shear Connectors	Each	4341



CAMBER DIAGRAM

GIRDER	A	B	C
B5 & D5	1 3/8"	2 3/8"	1 3/8"

CAMBER VALUES

(Dimensions in inches)

NOTES:

- All structural steel shall meet notch toughness requirements (N.T.R.).
- All steel shown on this sheet shall be AASHTO M270 Grade 50.
- See Sht. S-49 for ramp connection detail.
- See Shts. S-50 for floating bearing details.
- See Shts. S-48 & S-49 for diaphragm locations.

REVISIONS	
NAME	DATE

ILLINOIS DEPARTMENT OF TRANSPORTATION
 IL ROUTE 162 OVER I-55/70 IN TROY
 F.A.I ROUTE 70 SECTION 60-10K-1, 60-10HB
 MADISON COUNTY STATION 499+48.35
 STRUCTURE NO. 060-0338
ELEVATION - RAMP GIRDERS
TOP OF GIRDER ELEVATIONS

DESIGNED: JAN
 CHECKED: BTO
 DATE: 03/06

DRAWN: BTO
 CHECKED: JAN

SHT. S-44 OF S-68

STV Incorporated
Engineers/Architects/Planners/Construction Managers
 200 W. Monroe Street, Suite 1650
 Chicago, IL 60606-2015
 312/533-0655, FAX 312/543-0661