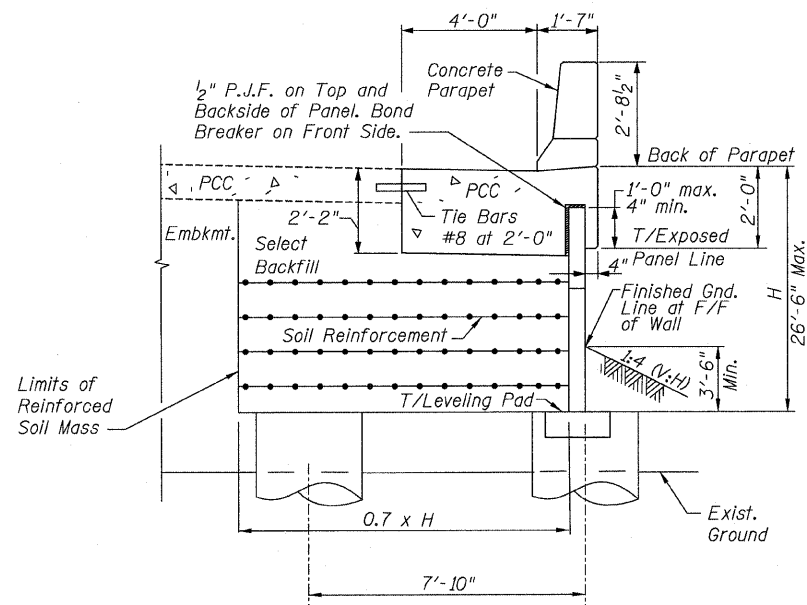
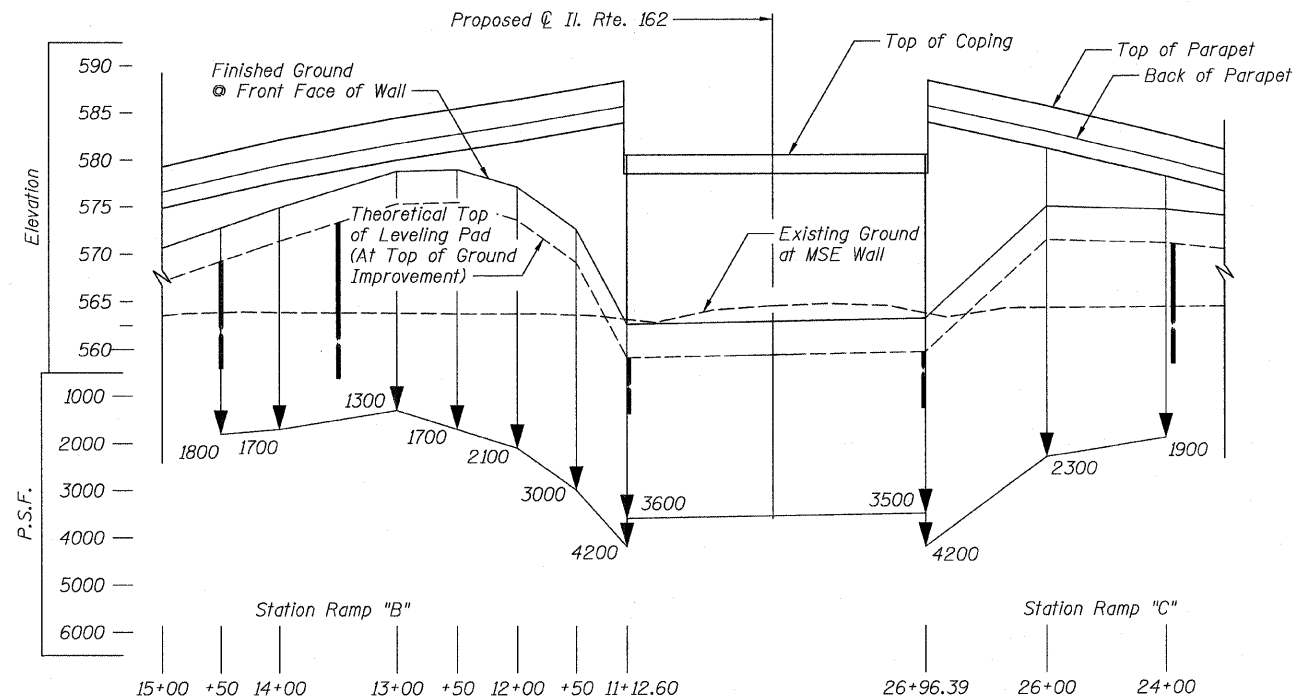


F.A.I. RTE.	SECTION	COUNTY	TOTAL SHEETS	SHEET NO.
70	*	MADISON	420	303
STA.		TO STA.		
FED. ROAD DIST. NO.		ILLINOIS	FED. AID PROJECT	
60-10K-1, 60-10HB		CONTRACT NO. 76709		



SECTION THRU WALL



EQUIVALENT UNIFORM SERVICE BEARING PRESSURE

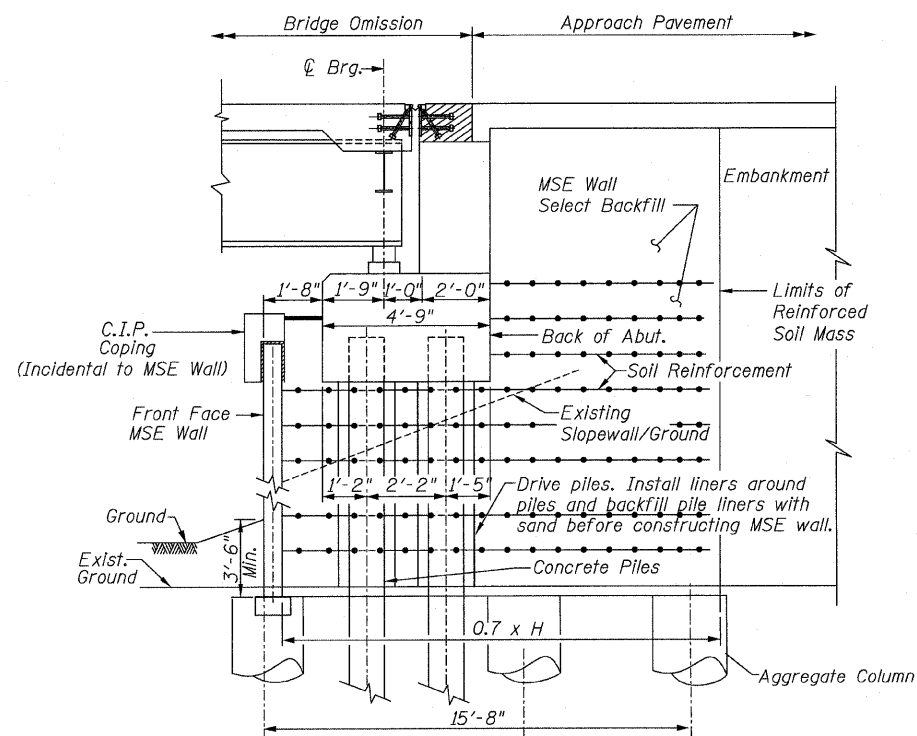
(At Top of Ground Improvement)

INDEX OF SHEETS

- R-01 General Plan I
- R-02 General Plan II
- R-03 Index of Sheets, General Notes, BOM, Wall Sections & Aggregate Column Ground Improvement Layout
- R-04 Parapet Elevations & Shoulder Plans Ramp B
- R-05 Parapet Elevations & Shoulder Plans Ramp B
- R-06 Parapet Elevation & Shoulder Plan Ramp B
- R-07 Parapet Elevations & Shoulder Plans Ramp C
- R-08 Parapet Elevations & Shoulder Plans Ramp C
- R-09 Parapet & Anchorage Slab Details Ramp B & C
- R-10 Boring Logs
- R-11 Boring Logs
- R-12 Boring Logs
- R-13 Boring Logs

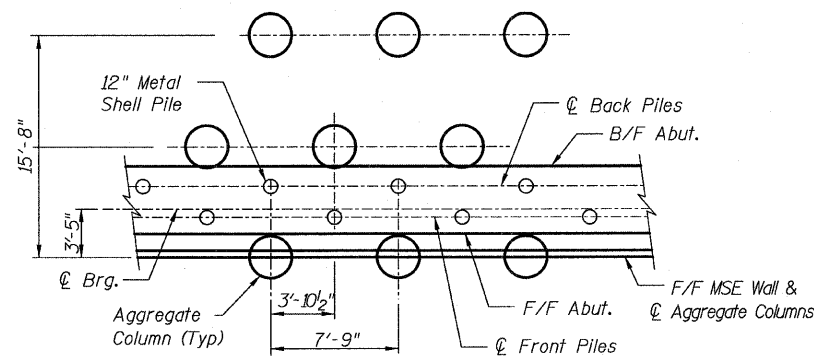
TOTAL BILL OF MATERIAL

ITEM	UNIT	TOTAL
Concrete Structures	CU YD	549
Protective Coat	SQ YD	876
Reinforcement Bars, Epoxy Coated	POUND	58,730
Name Plates	EACH	1
Mechanically Stabilized Earth Retaining Wall	SQ FT	16,000
Aggregate Column Ground Improvement	CU YD	4,045



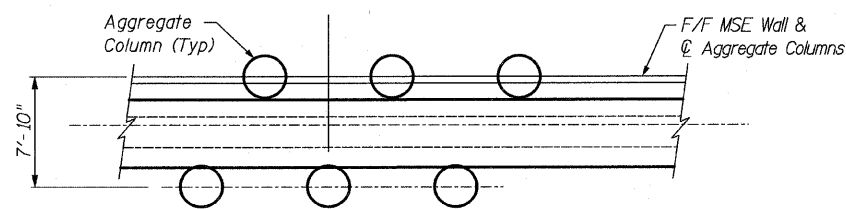
SECTION AT ABUTMENT

(Dimensions @ Rt. L's)



TYPICAL AGGREGATE COLUMN GROUND IMPROVEMENT/PILE LAYOUT (SHOWN AT ABUTMENT)

Contractor shall alternate aggregate column and pile spacing as shown.



TYPICAL AGGREGATE COLUMN GROUND IMPROVEMENT LAYOUT (SHOWN AT RAMP WALL)

GENERAL NOTES:

1. Reinforcement bars designated (E) shall be Epoxy Coated.
2. All edges shall have a 3/4" chamfer unless otherwise noted.
3. Sawed construction joints, and construction joints in shoulders, and grooved joints and expansion joints in parapets, shall be collinear with sawed construction joints in PCC pavement (jointed).
4. Reinforcement bars shall conform to the requirements of ASTM A 706 Grade 60
5. All construction joints shall be bonded.

REVISIONS	
NAME	DATE

ILLINOIS DEPARTMENT OF TRANSPORTATION
 IL ROUTE 162 OVER I-55/70 IN TROY
 F.A.I ROUTE 70 SECTION 60-10K-1, 60-10HB
 MADISON COUNTY STA. 17+40 TO STA. 22+50
 STRUCTURE NO. 060-W006
 INDEX OF SHEETS, GENERAL NOTES, BOM
 WALL SECTIONS & AGGREGATE COLUMN
 GROUND IMPROVEMENT LAYOUT RAMP B & C
 DRAWN BY KM
 CHECKED BY BJG
 DATE: 05/2006

Sht. R-03 of R-13

STV Incorporated
 Engineers/Architects/Planners/Construction Managers
 200 W. Monroe Street, Suite 1650
 Chicago, IL 60606-5015
 312/553-0655, FAX 312/553-0661