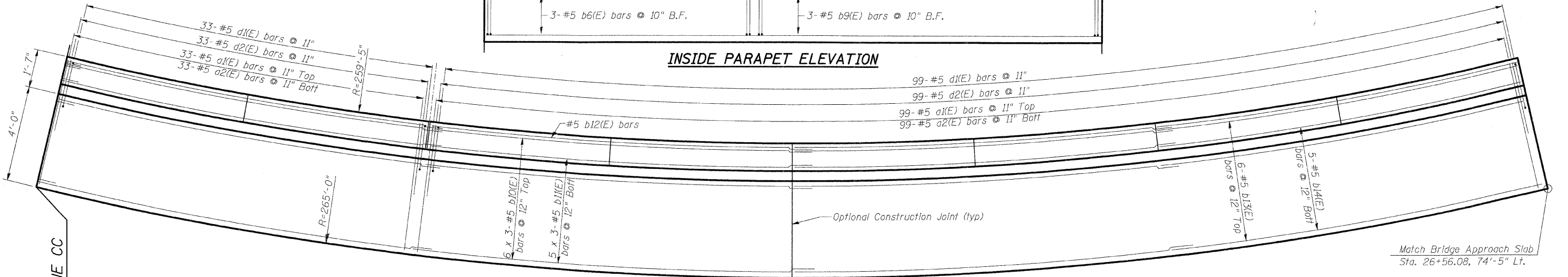
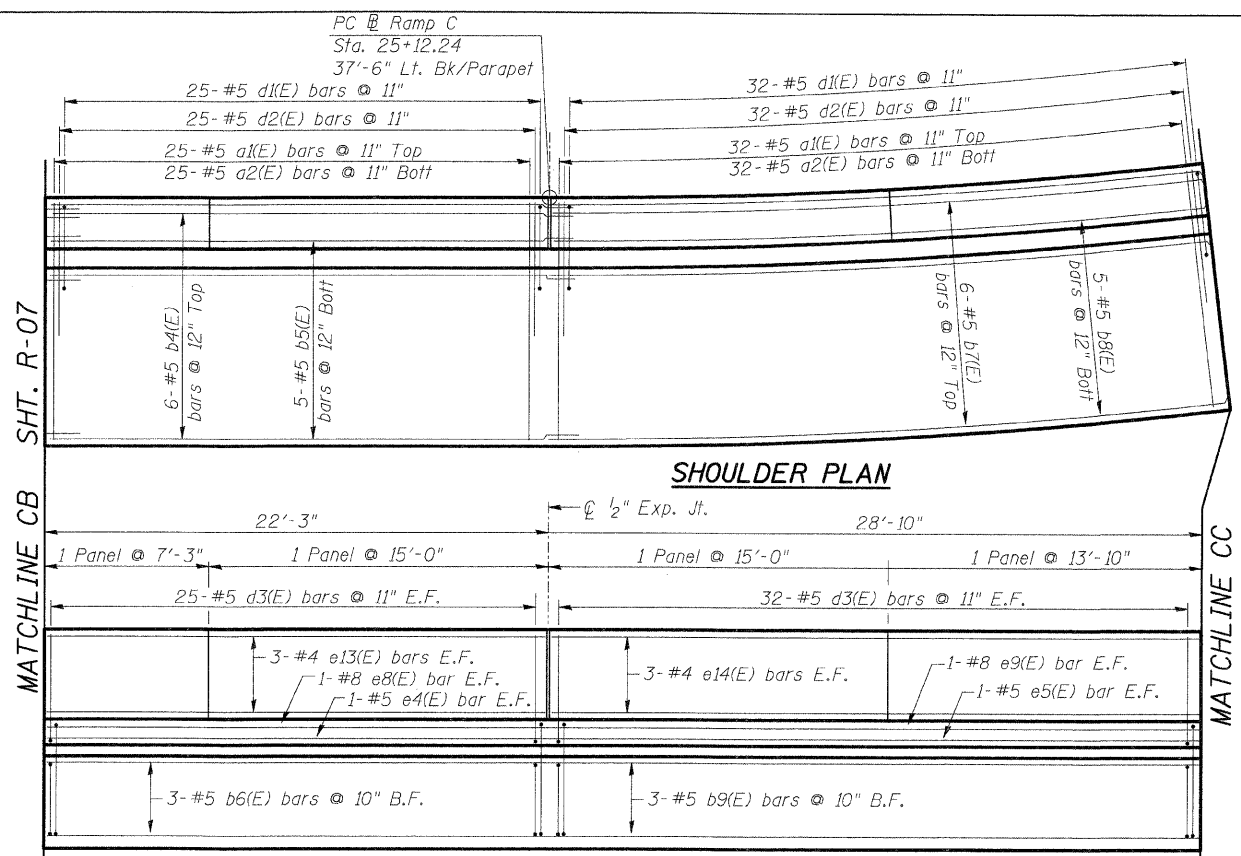


F.A.I. RTE.	SECTION	COUNTY	TOTAL SHEETS	SHEET NO.
70	*	MADISON	420	308
STA.		TO STA.		
FED. ROAD DIST. NO.		ILLINOIS	FED. AID PROJECT	
60-10K-1, 60-10HB		CONTRACT NO. 76709		



MIN. BAR LAP
 #4 - 1'-4"
 #5 - 2'-2"
 #8 - 4'-6"

Sht. R-08 of R-13
STV Incorporated
 Engineers/Architects/Planners/Construction Managers
 200 W. Monroe Street, Suite 1650
 Chicago, IL 60606-5015
 312/553-0655, FAX 312/553-0661

REVISIONS	
NAME	DATE

ILLINOIS DEPARTMENT OF TRANSPORTATION
 IL ROUTE 162 OVER I-55/70 IN TROY
 F.A.I ROUTE 70 SECTION 60-10K-1, 60-10HB
 MADISON COUNTY STA. 17+40 TO STA. 22+50
 STRUCTURE NO. 060-W006
PARAPET ELEVATIONS & SHOULDER PLANS
RAMP C
 DRAWN BY KM
 CHECKED BY BJG
 DATE: 05/2006