

STATE OF ILLINOIS
DEPARTMENT OF TRANSPORTATION
DIVISION OF HIGHWAYS

**PROPOSED
HIGHWAY PLANS**

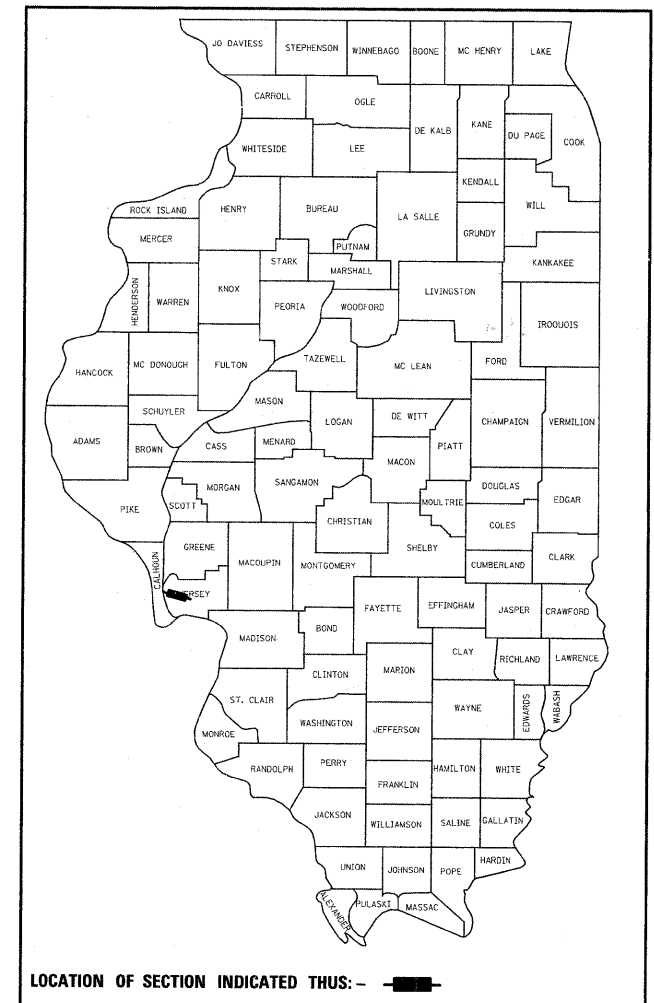
FAP ROUTE 325 (IL 16)
SECTION 3BR-2
PROJECT: *BRF-0325(050)*
JERSEY COUNTY

REPLACEMENT OF THE STRUCTURE CARRYING IL 16
OVER BAUM BRANCH CREEK
C-98-091-08

F.A.P. RTE.	SECTION	COUNTY	TOTAL SHEETS	SHEET NO.
325	3BR-2	JERSEY	90	1
FED. ROAD DIST. NO. 8	ILLINOIS	CONTRACT NO. 76B01		

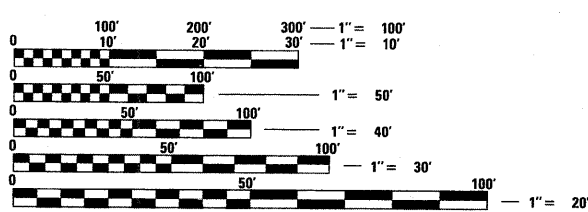
70+4=94

D-98-020-06



LOCATION OF SECTION INDICATED THUS: - [shaded box] -

FOR INDEX OF SHEETS, SEE SHEET NO.

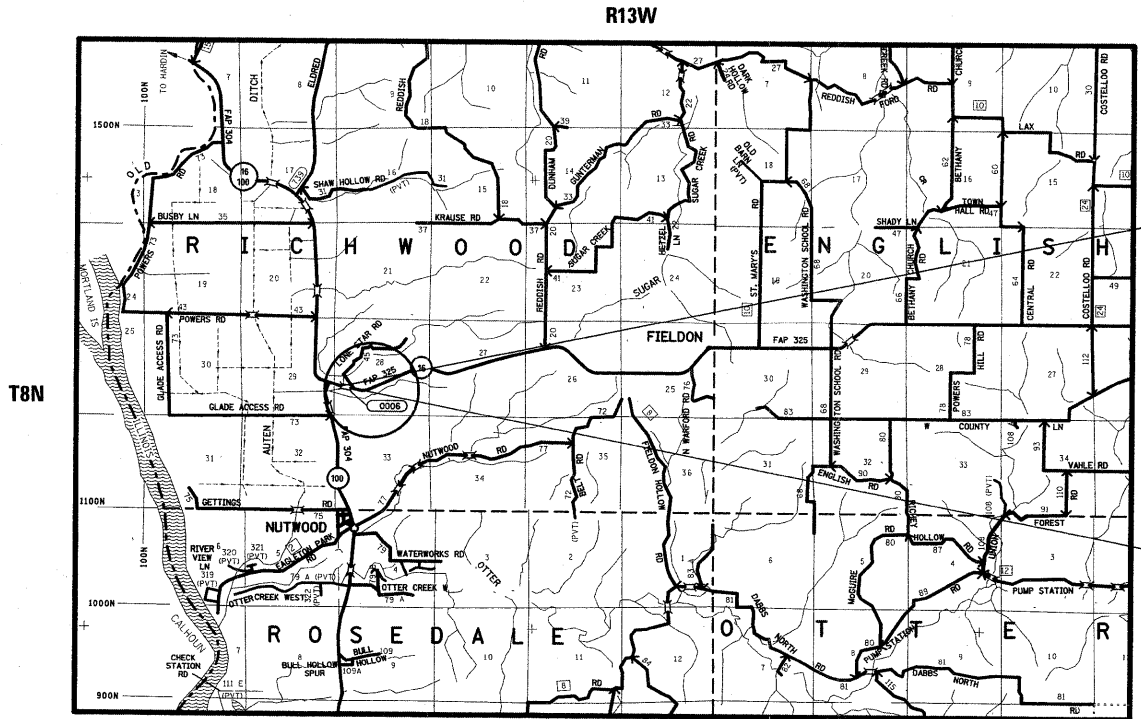


FULL SIZE PLANS HAVE BEEN PREPARED USING STANDARD ENGINEERING SCALES. REDUCED SIZED PLANS WILL NOT CONFORM TO STANDARD SCALES. IN MAKING MEASUREMENTS ON REDUCED PLANS, THE ABOVE SCALES MAY BE USED.

J.U.L.I.E.
JOINT UTILITY LOCATION INFORMATION FOR EXCAVATION
1-800-892-0123
OR 811

PROJECT ENGINEER PATTI LEBEAU - (618) 3146-3179
PROJECT MANAGER ART MUEHLFELD - (618) 346-3209

CONTRACT NO. 76B01



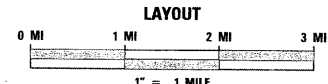
BEGIN
STA 119+47.75
EX. SN 042-0006
PR. SN 042-0041

END
STA 120+08.25

T8N

R13W

ADT
2450(2009)/3000(2029)
SU%: 3.4 MU%: 3.0



LATITUDE = 39.1060
LONGITUDE = 90.5582

GROSS LENGTH = 60.5 FEET = .01 MILES
NET LENGTH = .01 MILES

STATE OF ILLINOIS
DEPARTMENT OF TRANSPORTATION
DIVISION OF HIGHWAYS

SUBMITTED *December 11* 20 *08*

M. C. Jamie
DEPUTY DIRECTOR OF HIGHWAYS, REGION 5 ENGINEER

January 30 20 *09*
Charles J. Dransoff
ENGINEER OF DESIGN AND ENVIRONMENT

January 30 20 *09*
Christine M. Reed
DIRECTOR OF HIGHWAYS, CHIEF ENGINEER

**PRINTED BY THE AUTHORITY
OF THE STATE OF ILLINOIS**