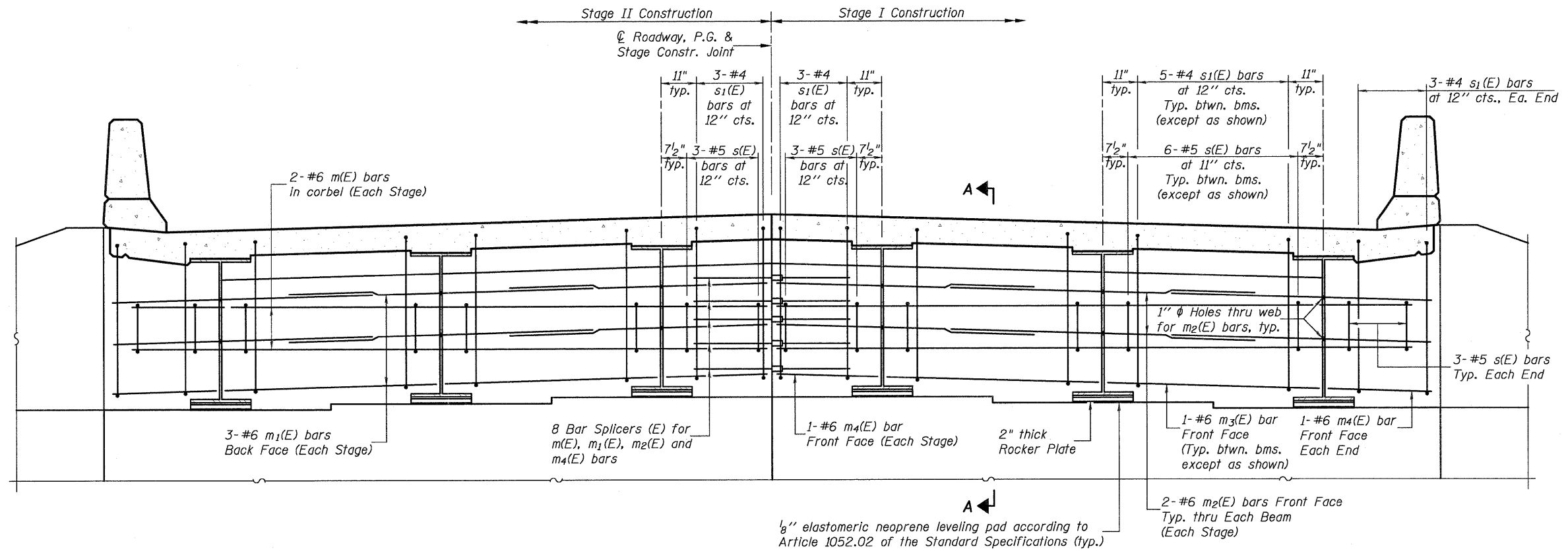


0420041\_76B01.I3.D1AF.DGN AUG. 29, 2008

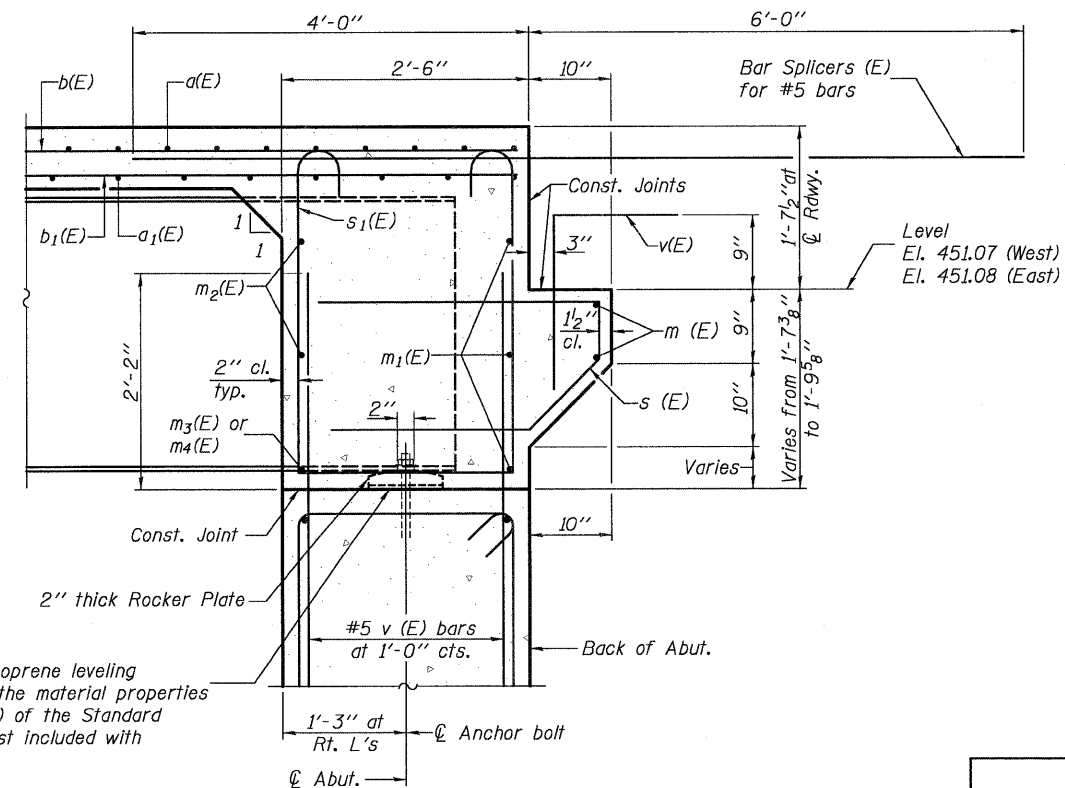
STATE OF ILLINOIS  
DEPARTMENT OF TRANSPORTATION



**DIAPHRAGM ELEVATION AT WEST ABUTMENT**  
(Looking West)

Notes:  
Reinforcement bars in diaphragm are billed with superstructure on sheet 12 of 21.  
Concrete in diaphragm is included with Concrete Superstructure on sheet 12 of 21.  
For details of bars s(E) & s<sub>1</sub>(E) see sheet 12 of 21.  
The s(E) and s<sub>1</sub>(E) bars shall be placed parallel to the beams. Spacing for these bars shall be at right angles to the beams.

**MIN. BAR LAP**  
#6 bar = 2'-7"



**SECTION A-A**

**INTEGRAL ABUTMENT DIAPHRAGM DETAILS**

DESIGNED	K.M.M.
CHECKED	L.D.G.
DRAWN	K.H.L.
CHECKED	B.G.H.

SI-DS2      5-16-08

SHEET NO. 13 21 SHEETS	F.A.P. RTE. 325	SECTION 3BR-2	COUNTY JERSEY	TOTAL SHEETS 90	SHEET NO. 54
	S.N. 042-0041		CONTRACT NO. 76B01		
FED. ROAD DIST. NO.      ILLINOIS      FED. AID PROJECT					

H.M. & G. NO. 6020.III