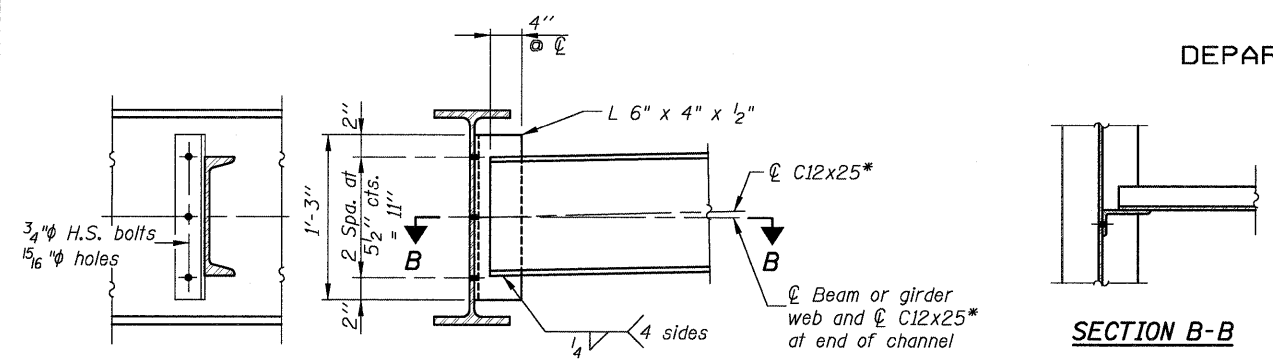


042004L76B01L4_FRMG.DGN DEC. 1, 2008

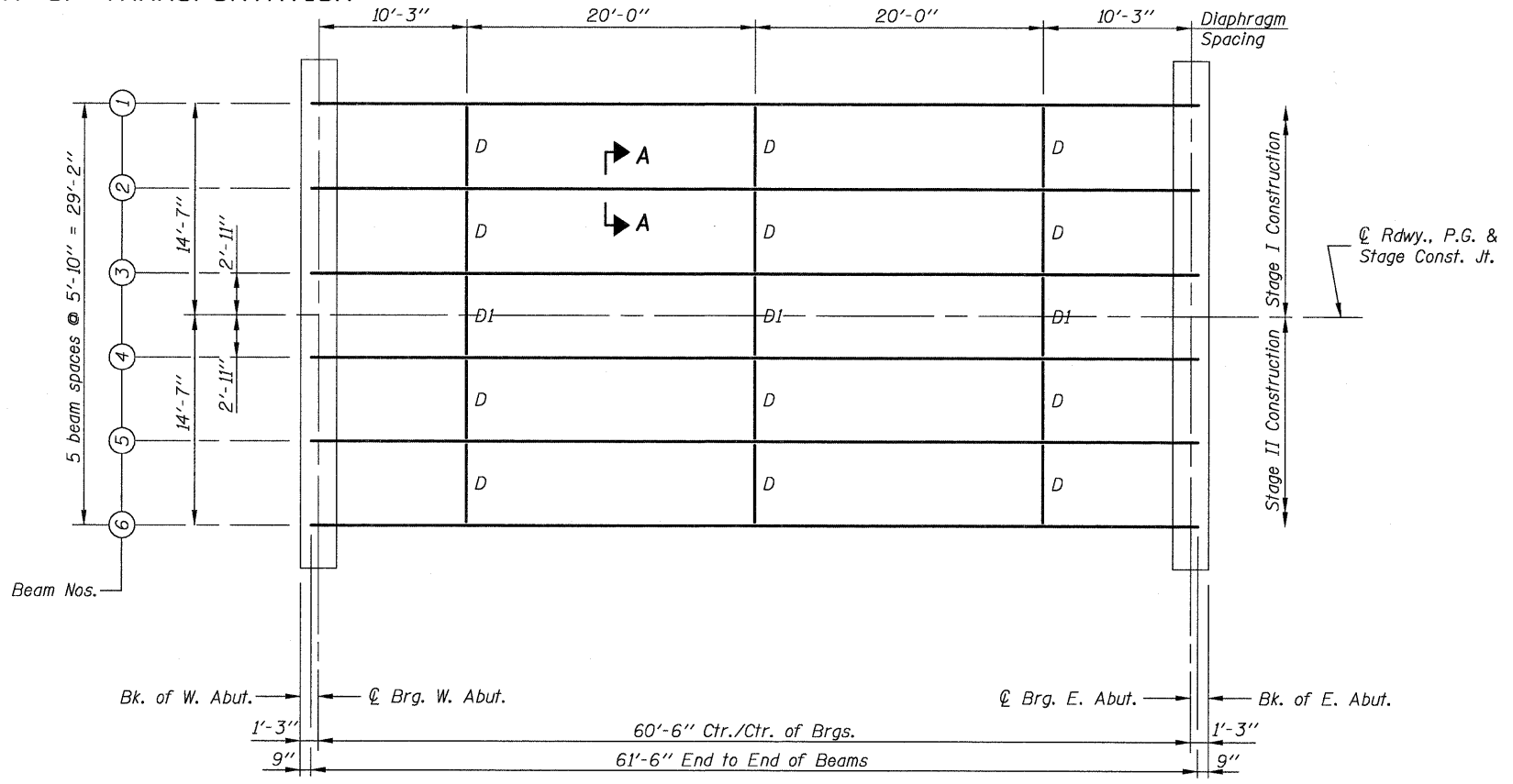
STATE OF ILLINOIS
DEPARTMENT OF TRANSPORTATION



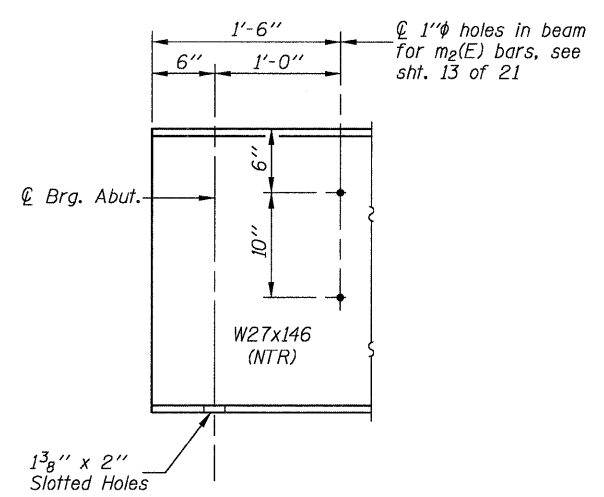
SECTION B-B

* Alternate channel C12x30 is permitted to facilitate material acquisition. Calculated weight of structural steel is based on the lighter section.

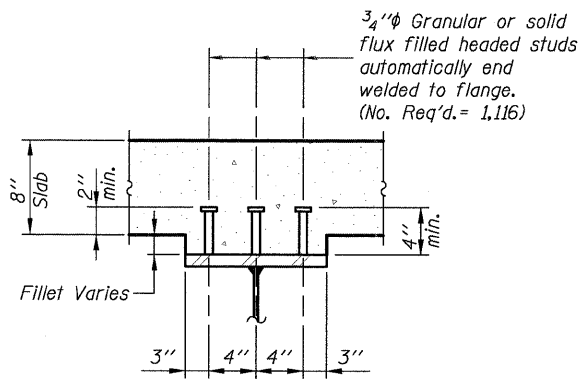
DIAPHRAGM D
(12 Required)



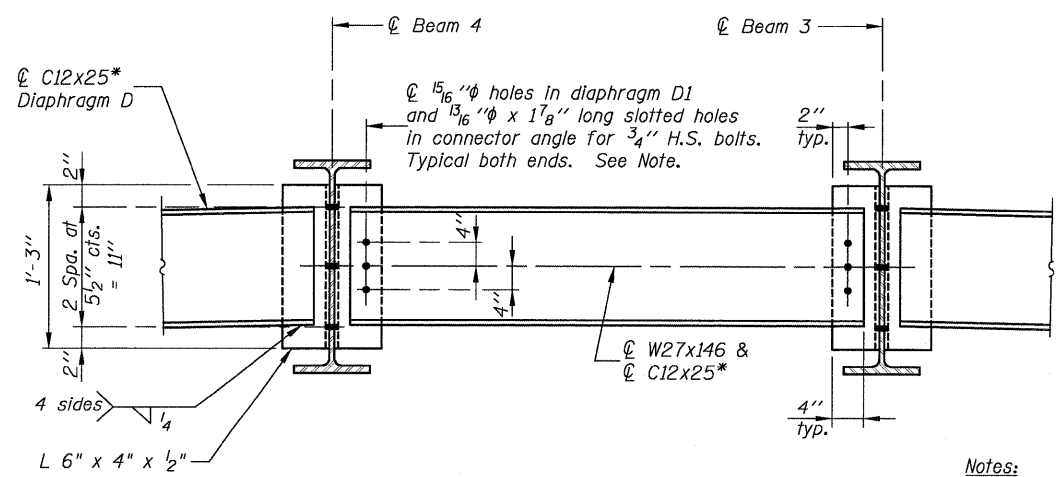
FRAMING PLAN
All Beams are W27x146 (NTR) and AASHTO M270, Gr. 50.



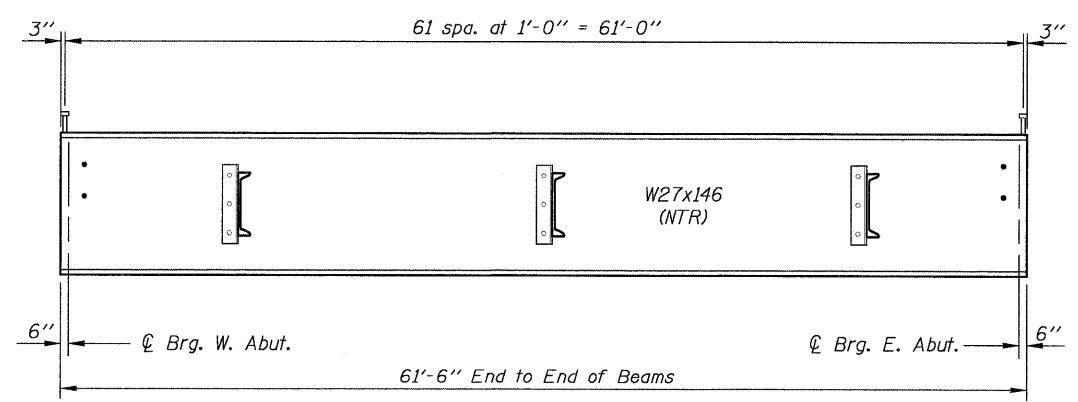
TYP. END OF BEAM ELEVATION



SECTION A-A



DIAPHRAGM D1
(3 Required)



BEAM ELEVATION

Notes:
Two hardened washers required for each set of oversized holes.
All cross frames or diaphragms between beams or girders shall be installed with erection pins and bolts in accordance with the erection plan approved by the Engineer. Individual cross frames or diaphragms at supports may be temporarily disconnected to install bearing anchor rods.
Load carrying components designated "NTR" shall conform to the Supplemental Requirements for Notch Toughness, Zone 2.
Bolts in slots shall be finger tight until the second stage pour is complete. Position slots so bolts start at one end with no concrete load and finish near the opposite end under deck load allowing maximum displacement without laterally stressing main members. All holes shall have appropriate hardened or plate washers.

DESIGNED	B.G.H.
CHECKED	L.D.G.
DRAWN	K.H.L.
CHECKED	B.G.H.

STRUCTURAL STEEL

SHEET NO. 14 21 SHEETS	F.A.P. RTE.	SECTION	COUNTY	TOTAL SHEETS	SHEET NO.
	325	3BR-2	JERSEY	90	55
S.N. 042-0041			CONTRACT NO. 76B01		
FED. ROAD DIST. NO. ILLINOIS FED. AID PROJECT					

H.M. & G. INC. 6020.III