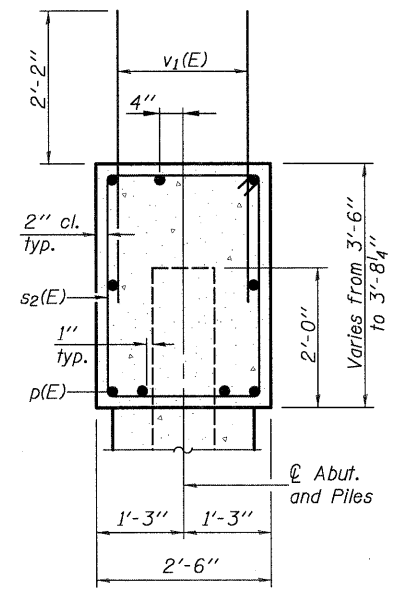
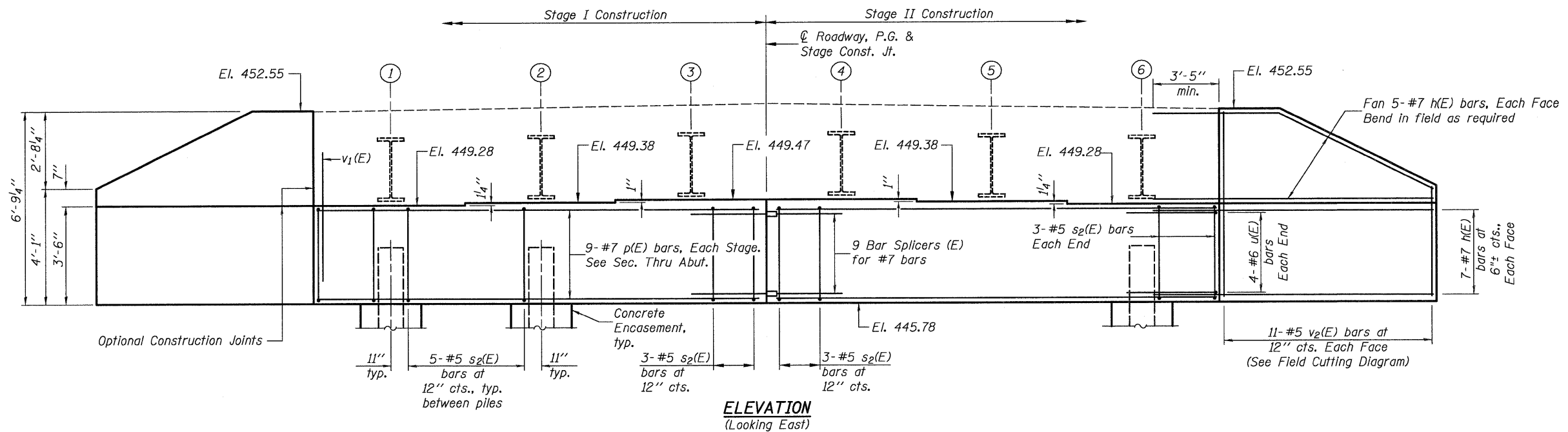


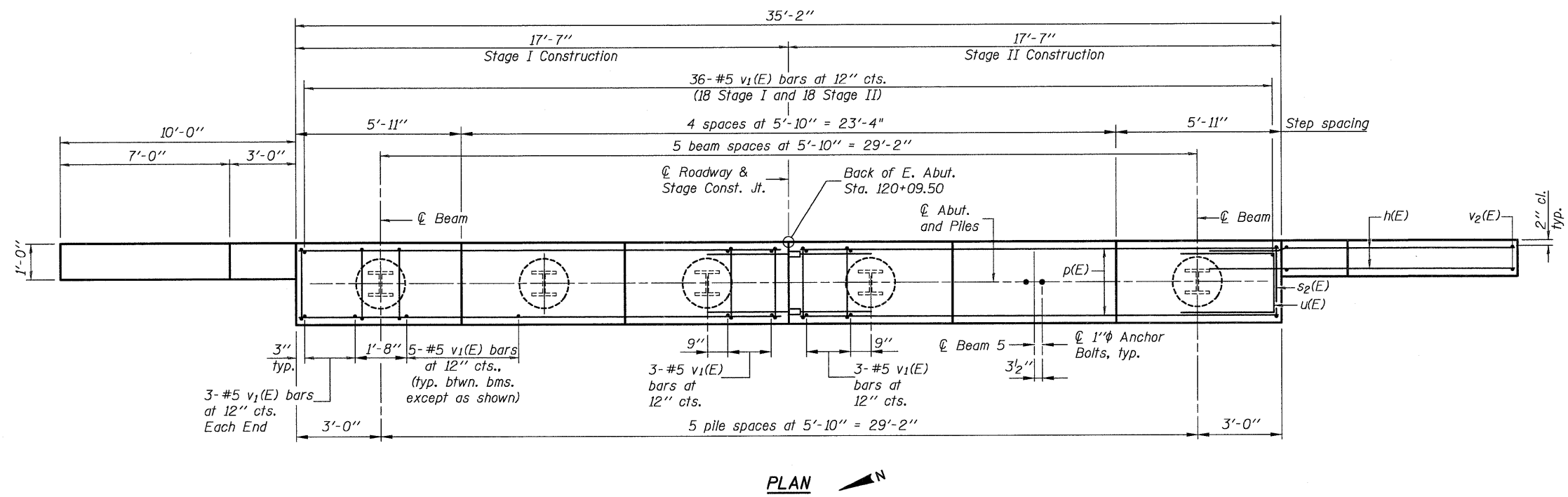
042004L76B01JT.EABT.DGN DEC. 1, 2008

Note: Four steps monolithically with cap.

STATE OF ILLINOIS
DEPARTMENT OF TRANSPORTATION



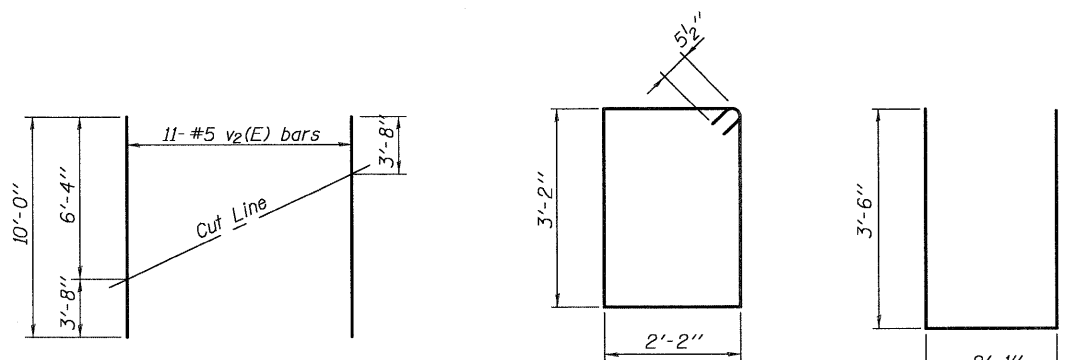
SEC. THRU ABUT.



PLAN

PILE DATA

Type:	HP 12x53
Nominal Required Bearing:	419 kips
Factored Resistance Available:	210 kips
Est. Length:	55 feet
No. Production Piles:	6
No. Test Piles:	0



FIELD CUTTING DIAGRAM

Order v2(E) full length. Cut as shown and use remainder of bars in opposite face.

BILL OF MATERIAL

Bar	No.	Size	Length	Shape
h(E)	48	#7	14'-0"	—
p(E)	18	#7	17'-3"	—
s2(E)	32	#5	11'-7"	□
u(E)	8	#6	9'-1"	—
v1(E)	68	#5	4'-4"	—
v2(E)	22	#5	10'-0"	—
Structure Excavation	Cu. Yd.	71		
Concrete Structures	Cu. Yd.	16.0		
Reinforcement Bars, Epoxy Coated	Pound	3,040		
Furnishing Steel Piles HP 12x53	Foot	330		
Driving Piles	Foot	330		
Pile Shoes	Each	6		
Concrete Encasement	Cu. Yd.	2.1		

For details of Bar Splicers, see sheet 18 of 21.
For details of piles and Concrete Encasement, see sheet 19 of 21.

DESIGNED	L.D.G.
CHECKED	B.G.H.
DRAWN	K.H.L.
CHECKED	B.G.H.

AI-0 5-16-08

SHEET NO. 17 21 SHEETS	F.A.P. RTE.	SECTION	COUNTY	TOTAL SHEETS	SHEET NO.
	325	3BR-2	JERSEY	90	58
S.N. 042-0041			CONTRACT NO. 76B01		
FED. ROAD DIST. NO. ILLINOIS FED. AID PROJECT					

EAST ABUTMENT

H.M. & G. NO. 6020.III