

STATE OF ILLINOIS
 DEPARTMENT OF TRANSPORTATION
 DIVISION OF HIGHWAYS

**PROPOSED
 HIGHWAY PLANS**

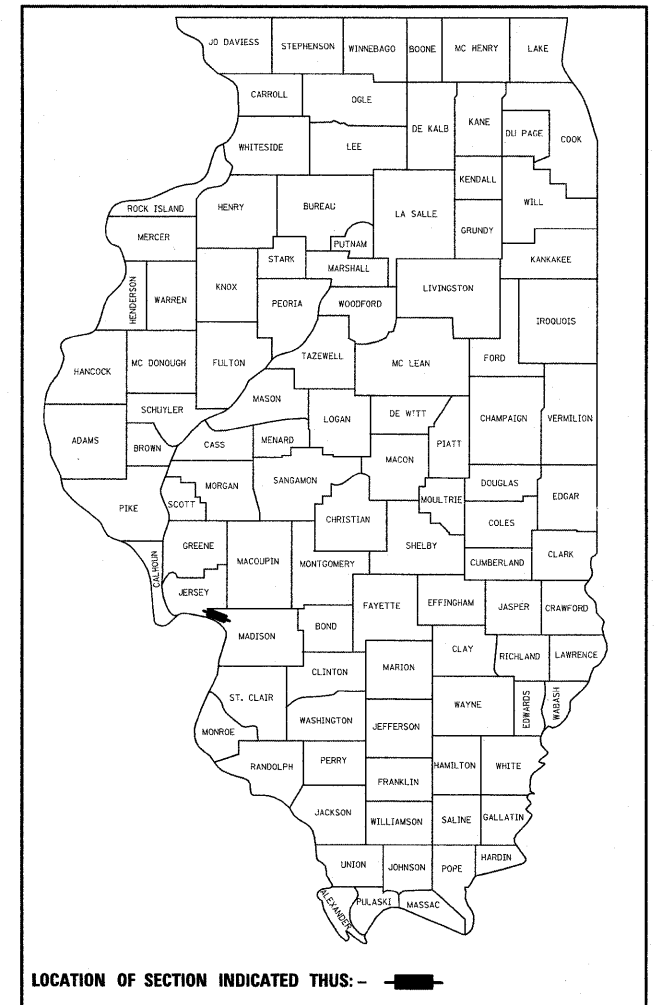
FAU ROUTE 8956 (IL ROUTE 3)
 SECTION 59BR-1
 PROJECT: *BRM-8956(003)*
 STRUCTURE REPLACEMENT
 MADISON COUNTY

C-98-033-09

FAU RTE.	SECTION	COUNTY	TOTAL SHEETS	SHEET NO.
8956	59BR-1	MADISON	75	1
FED. ROAD DIST. NO.	ILLINOIS	CONTRACT NO. 76B18		

* 75 + 4 = 79

D-98-021-06



LOCATION OF SECTION INDICATED THIS: - [shaded area] -

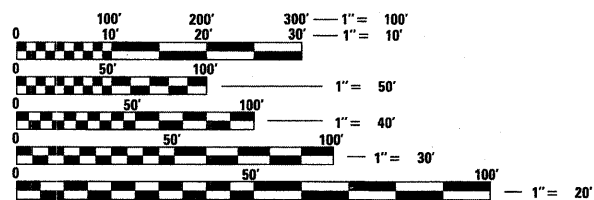
FOR INDEX OF SHEETS, SEE SHEET NO. 2

FAU 8956 (IL 3)

ADT: 5500 (2007)
 ADT: 6700 (2027)
 SU: 2.3%
 MU: 3.2%

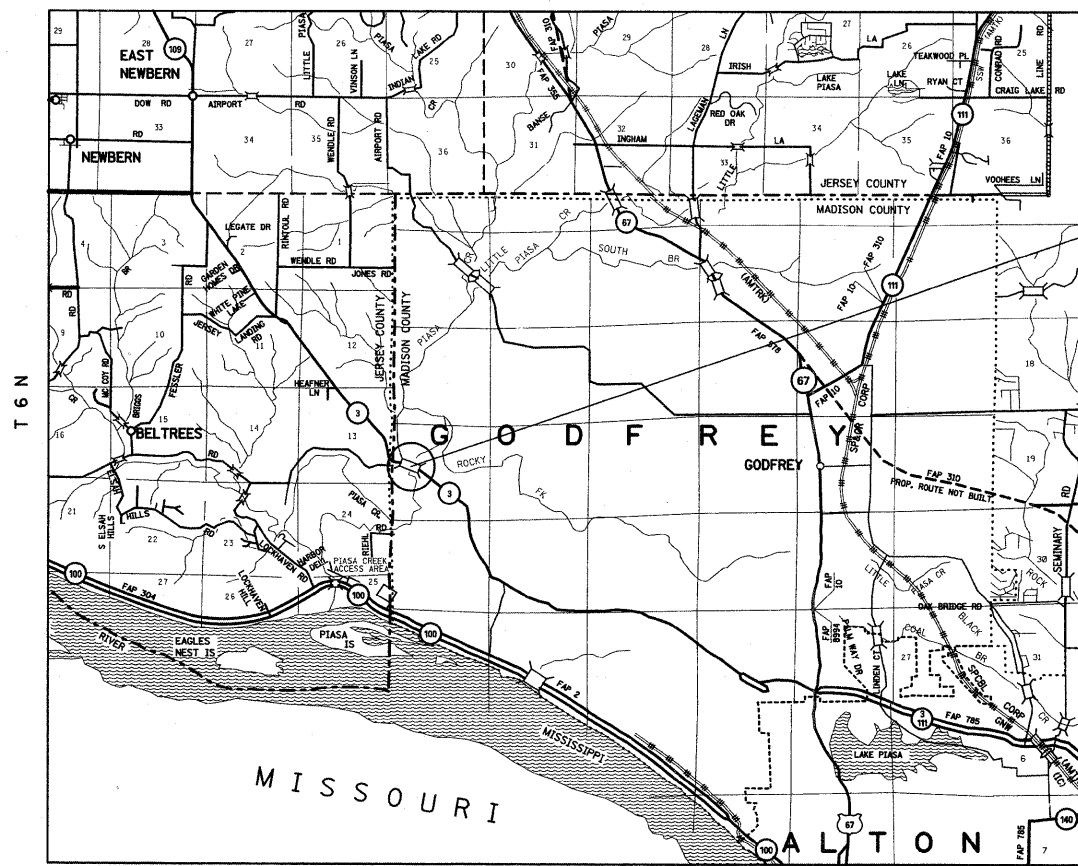
DESIGN DESIGNATION

NA



FULL SIZE PLANS HAVE BEEN PREPARED USING STANDARD ENGINEERING SCALES. REDUCED SIZED PLANS WILL NOT CONFORM TO STANDARD SCALES. IN MAKING MEASUREMENTS ON REDUCED PLANS, THE ABOVE SCALES MAY BE USED.

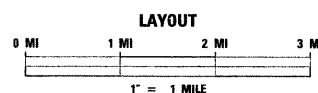
J.U.L.I.E.
 JOINT UTILITY LOCATION INFORMATION FOR EXCAVATION
 1-800-892-0123
 OR 811



FIVE SPAN PPC DECK BEAM
 TO BE REPLACED WITH THREE
 SPAN PLATE GIRDER STRUCTURE
 OVER PIASA CREEK
 STA 636 + 82.5
 SN 060-0153 (E)
 SN 060-0343 (P)

PROJECT ENGINEER: PATTI LeBEAU (618) 346-3178
 PROJECT MANAGER: ARTHUR MUEHLFELD (618) 346-3209

CONTRACT NO. 76B18



LATITUDE: 38.9739°
 LONGITUDE: 90.2722°

NET /GROSS LENGTH = 225.5 FT. = 0.043 MILES

STATE OF ILLINOIS
 DEPARTMENT OF TRANSPORTATION
 DIVISION OF HIGHWAYS

SUBMITTED *January 30, 2009*

Mary C. Jamie
 DEPUTY DIRECTOR OF HIGHWAYS, REGION 5 ENGINEER

March 27, 2009
Charles A. Ingersoll
 ENGINEER OF DESIGN AND ENVIRONMENT

March 27, 2009
Christine M. Reed
 DIRECTOR OF HIGHWAYS, CHIEF ENGINEER

**PRINTED BY THE AUTHORITY
 OF THE STATE OF ILLINOIS**