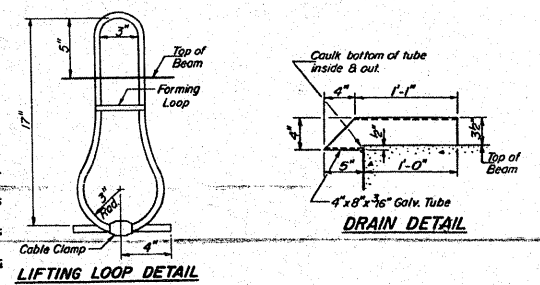
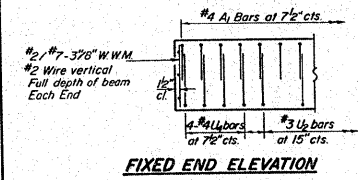
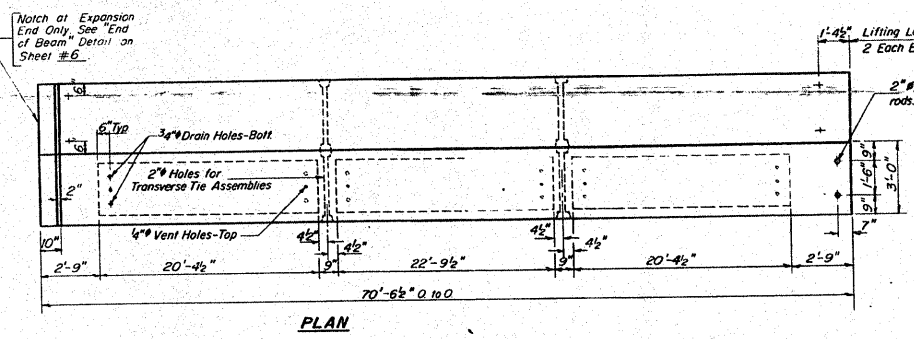
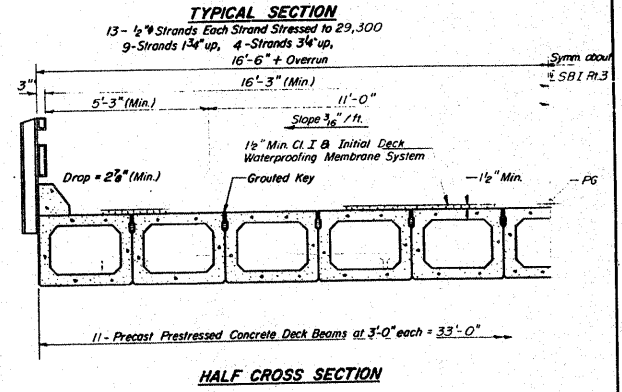
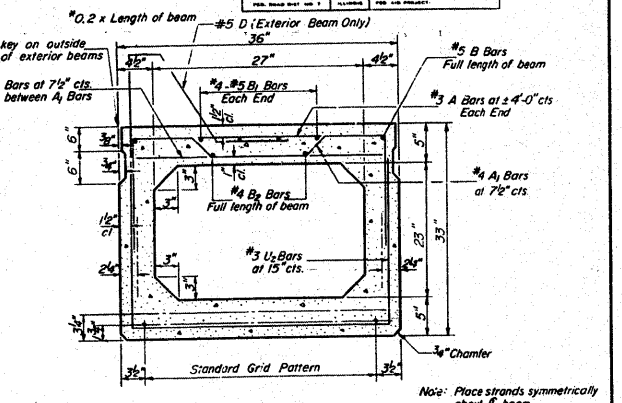
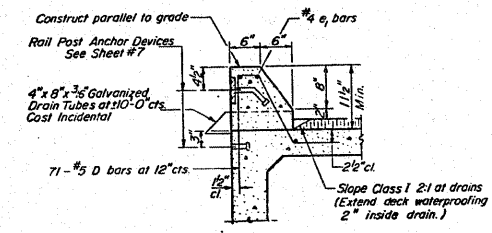
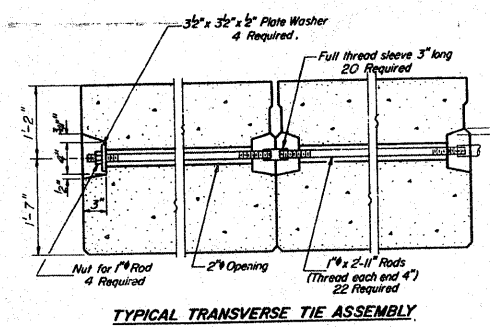
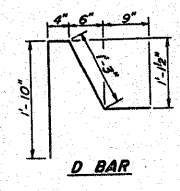
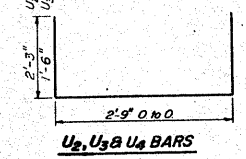
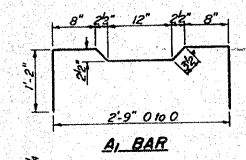
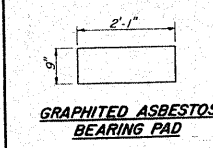
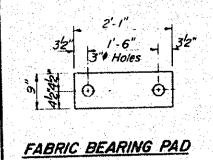


STATE OF ILLINOIS
DEPARTMENT OF TRANSPORTATION

PROJECT NO.	SECTION	COUNTY	SHEET NO.	TOTAL SHEETS
56BR	Madison	21	14	10 SHEETS



DESIGNED	Paul Bennett	EXAMINED	[Signature]
CHECKED	[Signature]	PASSED	[Signature]
DRAWN	P. Bennett	APPROVED	[Signature]
CHECKED	[Signature]	DIRECTOR OF HIGHWAYS	

NOTES
Prestressing steel shall be non-galvanized high strength, stress-relieved 7-wire strand, Grade 270. The nominal diameter shall be 1/2" and the nominal cross-sectional area shall be 0.155 sq. in. Lifting loops shall be 1/2" diameter, 6x25 class wire rope with fiber core and shall have a minimum ultimate tensile strength of 46,000 lbs. The 1" rods in the transverse tie assembly shall be tightened to a snug fit and the threads set. Pockets that receive transverse tie bar on outside shall be filled with grout after transverse tie assembly is in place. Longitudinal shear keys shall be packed with a very dry mix of 2:1 sand and P.C. mortar. After beams have been erected, holes for the dowel anchors shall be drilled into the sub-structure and the anchor dowels shall be grouted in place.

Cost of reinforcement and accessories cast into the beam, of bearing pads, of dowel rods, and of grouting longitudinal shear keys is included in unit price bid for "Precast Prestressed Concrete Deck Beams".

BILL OF MATERIAL

Bar	No.	Size	Length	Shape
a	3	#5	32'-6"	
Precast Prestressed Concrete Deck Beams	Sq Ft	2328		
Reinforcement Bars	Pounds	100		
Class X Concrete	Cu Yds.	8		

SUPERSTRUCTURE
SPAN#2 33" x 36" BEAMS
S.B.I. RT. 3 SECTION 59 BR
MADISON COUNTY
STA. 638+00

FOR INFORMATION ONLY

FILE NAME =	USER NAME = harbaughrd	DESIGNED -	REVISED -	STATE OF ILLINOIS DEPARTMENT OF TRANSPORTATION	EXISTING BRIDGE PLANS	F.A.U. RTE.	SECTION	COUNTY	TOTAL SHEETS	SHEET NO.
c:\pwork\pwi\dot\harbaughrd\dms52107\p02106a.dgn	DRAWN -	REVISED -	8956			59BR-1	MADISON	75	60	
PLOT SCALE = 50.0000' / IN.	CHECKED -	REVISED -	CONTRACT NO. 76B18							
PLOT DATE = 1/23/2009	DATE -	REVISED -	SCALE:			SHEET NO. 3 OF 9 SHEETS	STA. TO STA.	FED. ROAD DIST. NO.	(ILLINOIS) FED. AID PROJECT	