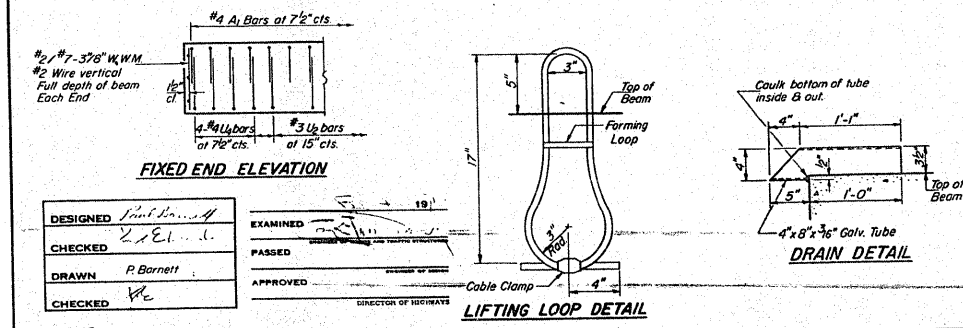
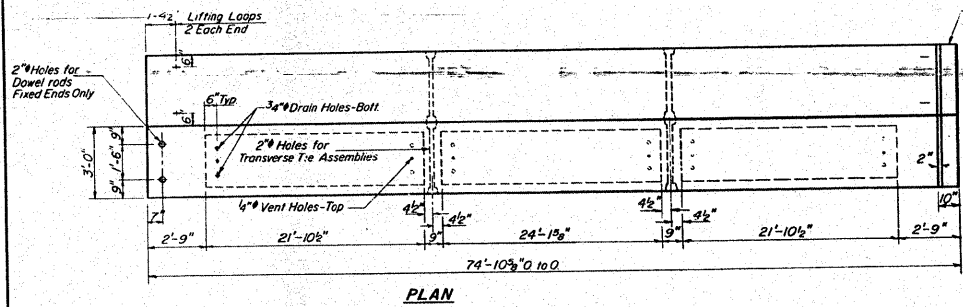
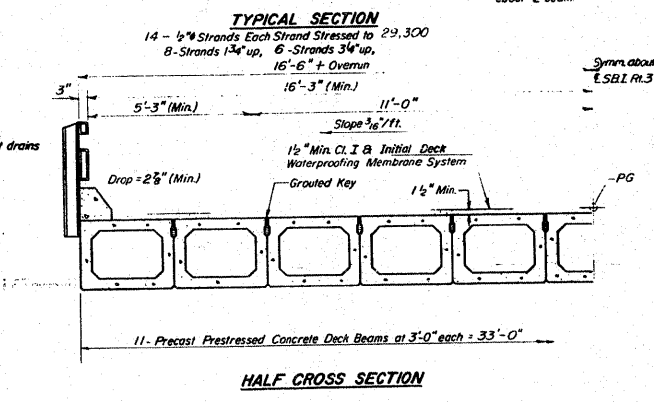
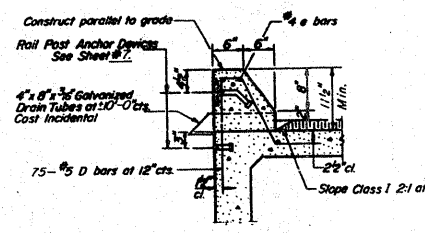
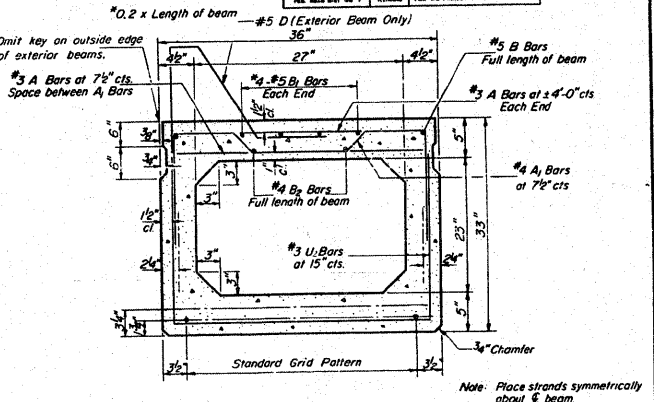
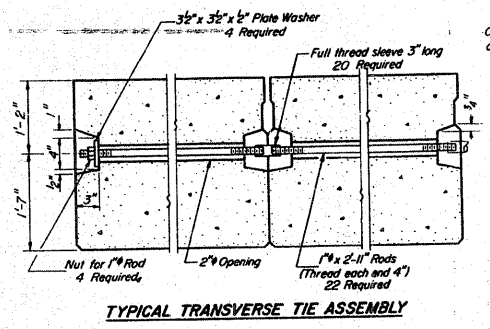
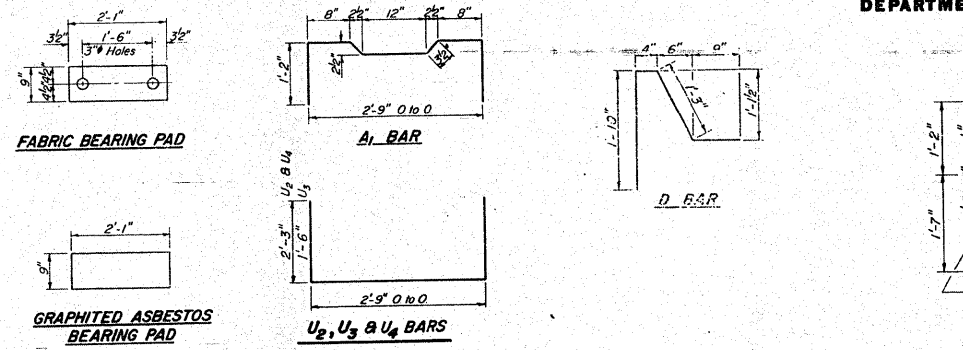


STATE OF ILLINOIS
DEPARTMENT OF TRANSPORTATION

SECTION	COUNTY	SHEET NO.	TOTAL SHEETS
59 BR	MADISON	21	15



DESIGNED	PAUL BARNETT
CHECKED	P. BARNETT
DRAWN	P. BARNETT
CHECKED	P. BARNETT

EXAMINED	PAUL BARNETT
PASSED	PAUL BARNETT
APPROVED	PAUL BARNETT

NOTES

Prestressing steel shall be non-galvanized high strength, stress-relieved 7-wire strand, Grade 270. The nominal diameter shall be 1/2" and the nominal cross-sectional area shall be 0.155 sq. in. Lifting loops shall be 3/4" diameter, 5 x 25 class wire rope with fiber core and shall have a minimum ultimate tensile strength of 45,000 lbs. The 1" rods in the transverse tie assembly shall be tightened to a snug fit and the threads set. Pockets that receive transverse tie bar on outside shall be filled with grout after transverse tie assembly is in place. Longitudinal shear keys shall be packed with a very dry mix of 2-1 sand and P.C. mortar. After beams have been erected, holes for the dowel anchors shall be drilled into the sub-structure and the anchor dowels shall be grouted in place.

Cost of reinforcement and accessories cast into the beam, of bearing pads, of dowel rods and of grouting longitudinal shear keys is included in unit price bid for "Precast Prestressed Concrete Deck Beams."

BILL OF MATERIAL

Bar	No	Size	Length	Shape
a	3	#5	32'-6"	
Precast Prestressed Concrete Deck Beams	Sq Ft		2471	
Reinforcement Bars	Pounds		100	
Class X Concrete	Cu Yds		.8	

SUPERSTRUCTURE
SPAN #3 33" x 36" BEAMS
S.B.I. RT. 3 SECTION 59 BR
MADISON COUNTY
STA. 638+00

FOR INFORMATION ONLY

FILE NAME =	USER NAME = harbaughrd	DESIGNED -	REVISED -	STATE OF ILLINOIS DEPARTMENT OF TRANSPORTATION	EXISTING BRIDGE PLANS	F.A.U. RTE.	SECTION	COUNTY	TOTAL SHEETS	SHEET NO.
ca:\pw\work\pww\dot\harbaughrd\dms52107\p	7/21/06.dgn	DRAWN -	REVISED -			8956	59BR-1	MADISON	75	61
PLOT SCALE = 50.0000' / IN.		CHECKED -	REVISED -			CONTRACT NO. 76B18				
PLOT DATE = 1/23/2009		DATE -	REVISED -			FED. ROAD DIST. NO. [ILLINOIS] FED. AID PROJECT				
					STA. TO STA.					