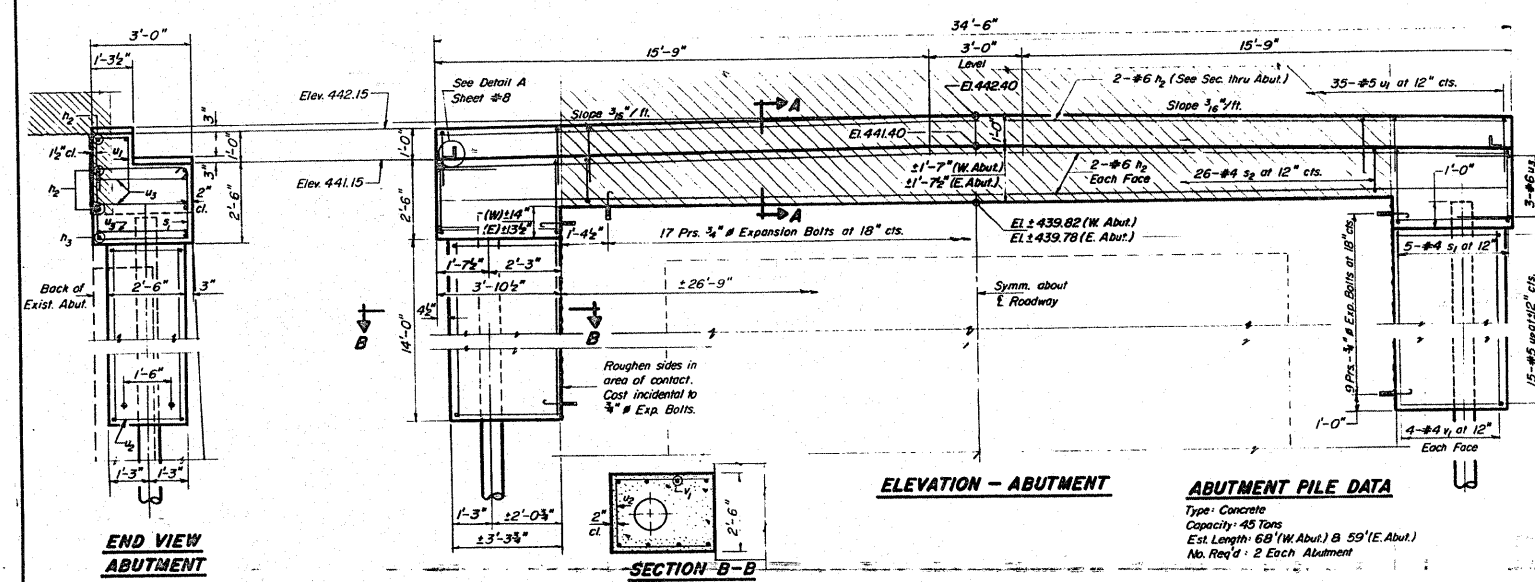


STATE OF ILLINOIS  
DEPARTMENT OF TRANSPORTATION

PROJECT NO.	SECTION	COUNTY	TOTAL SHEETS	SHEET NO.
54BR	Madison	21	20	10

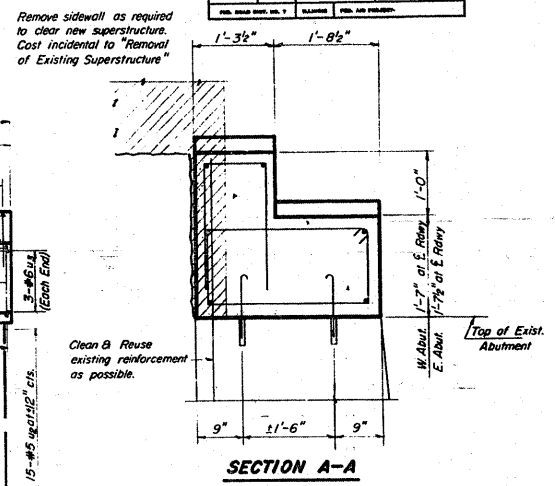
Hatched area to be removed prior to constructing new cap.  
Cost of concrete removed shall be incidental to "Removal of Existing Superstructure."



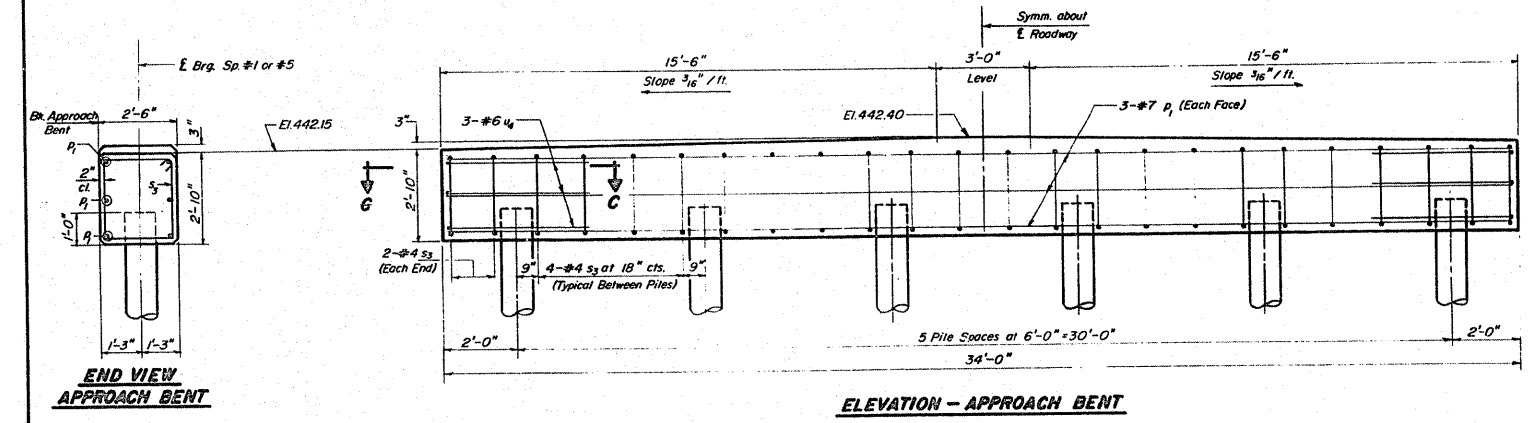
ELEVATION - ABUTMENT

ABUTMENT PILE DATA

Type: Concrete  
Capacity: 43 Tons  
Est. Length: 68' (W. Abut.) & 59' (E. Abut.)  
No. Req'd: 2 Each Abutment



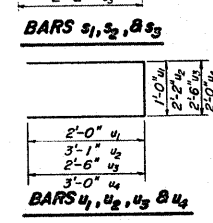
SECTION A-A



ELEVATION - APPROACH BENT

APPROACH BENT PILE DATA

Type: Concrete  
Capacity: 30 Tons  
Est. Length: 47' (W. Appra.) & 52' (E. Appra.)  
No. Req'd: 6 (W. Appra.)  
5 + 1 Test Pile (E. Appra.)



TWO ABUTMENTS  
TWO APPROACH BENTS  
BILL OF MATERIAL

Bar	No.	Size	Length	Shape	
Dz	12	#6	34'-3"	—	
s1	20	#4	10'-5"	□	
s2	52	#4	8'-5"	□	
u1	70	#5	5'-0"	L	
u2	60	#5	8'-4"	L	
u3	12	#6	7'-6"	L	
u4	32	#4	14'-9"	—	
Class X Concrete				Cu Yds.	32.6
Reinforcement Bars				Pounds	2390
Expansion Bolts (3/4")				Each	140
Concrete Piles				Lin. Ft.	254

Bar	No.	Size	Length	Shape	
p1	12	#7	33'-8"	—	
s3	48	#4	10'-1"	□	
u4	12	#6	8'-0"	L	
Class X Concrete				Cu Yds.	18.3
Reinforcement Bars				Pounds	1290
Concrete Piles				Lin. Ft.	542
Test Piles (Concrete)				Each	1

DESIGNED: J. Edwards  
CHECKED: R. Barnett  
DRAWN: R. Barnett  
CHECKED: J. Edwards

EXAMINED: [Signature]  
PASSED: [Signature]  
APPROVED: [Signature]

SECTION C-C

FOR INFORMATION ONLY

FILE NAME =	USER NAME = herbaughrd	DESIGNED -	REVISED -	STATE OF ILLINOIS DEPARTMENT OF TRANSPORTATION	EXISTING BRIDGE PLANS	F.A.J. RTE.	SECTION	COUNTY	TOTAL SHEETS	SHEET NO.
c:\pw\work\p\dot\harbaugh-r\dms52107\p\2106a.dgn		DRAWN -	REVISED -			8956	59BR-1	MADISON	75	64
PLOT SCALE = 50.0000' / IN.		CHECKED -	REVISED -			CONTRACT NO. 76B18				
PLOT DATE = 1/23/2009		DATE -	REVISED -			SCALE:	SHEET NO. 7 OF 9 SHEETS	STA.	TO STA.	FED. ROAD DIST. NO.