

STATE OF ILLINOIS
DEPARTMENT OF TRANSPORTATION
DIVISION OF HIGHWAYS

PLANS FOR PROPOSED HIGHWAY IMPROVEMENT

FOR INDEX OF SHEETS, SEE SHEET NO. 2

FAP ROUTE 690 (IL ROUTE 160)

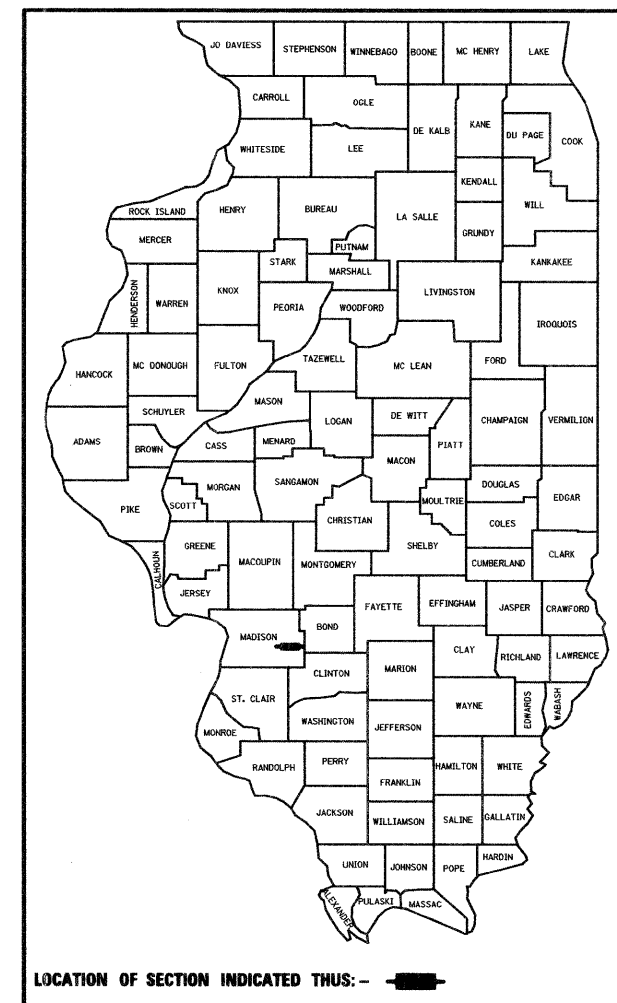
SECTION 41X-RS-1
MADISON COUNTY

IL ROUTE 160 RESURFACING AND
INTERSECTION IMPROVEMENTS

| | | | | |
|---------------------|----------|--------------------|--------------|-----------|
| F.A.P. RTE. | SECTION | COUNTY | TOTAL SHEETS | SHEET NO. |
| 690 | 41X-RS-1 | MADISON | 58 | 1 |
| FED. ROAD DIST. NO. | ILLINOIS | CONTRACT NO. 76C35 | | |

★ 58+1=59

D-98-005-09



LOCATION OF SECTION INDICATED THUS: -

STATE OF ILLINOIS
DEPARTMENT OF TRANSPORTATION
DIVISION OF HIGHWAYS

SUBMITTED Jan 14 2009

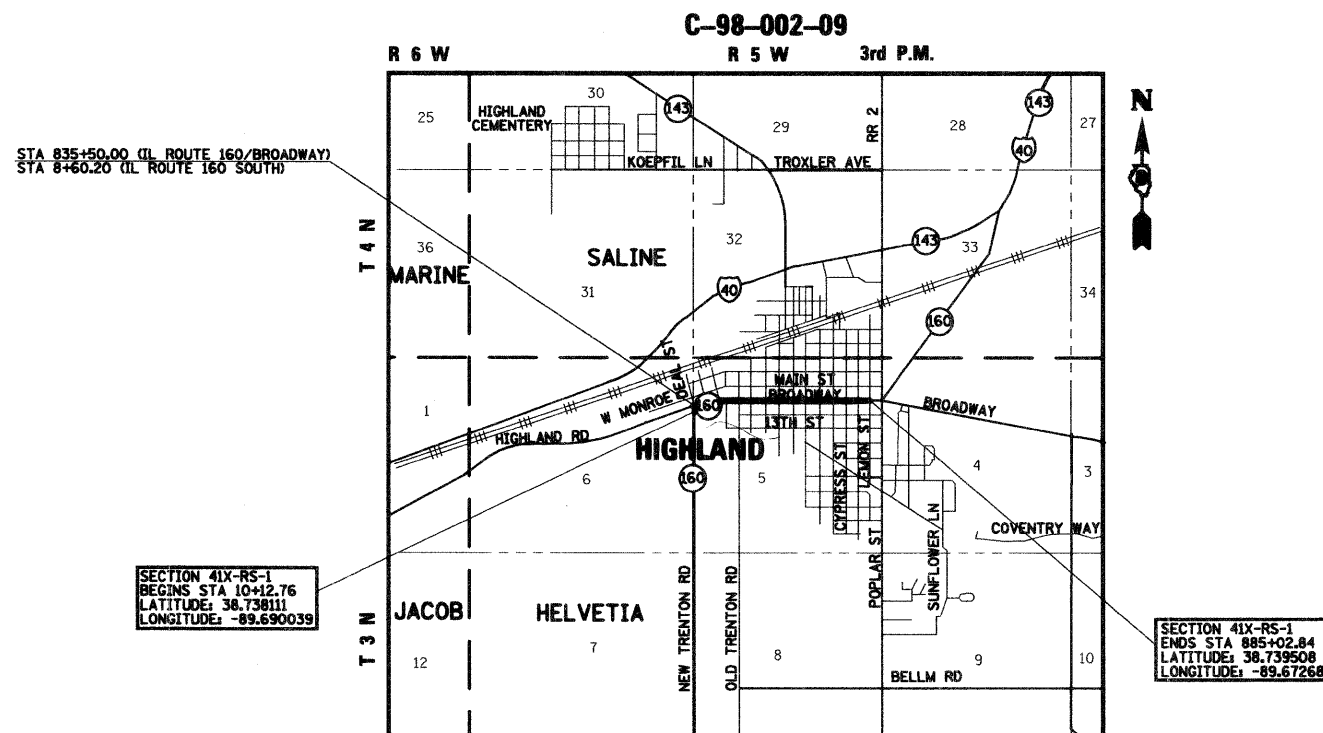
Mary C. Jamie
DEPUTY DIRECTOR OF HIGHWAYS, REGION 5 ENGINEER

March 27, 2009
Charles J. Ingersoll
ENGINEER OF DESIGN AND ENVIRONMENT

March 27, 2009
Christine M. Reed
DIRECTOR OF HIGHWAYS, CHIEF ENGINEER


BERNARDIN * LOCHMUELLER & ASSOCIATES, INC.
3 OAK DRIVE
MARYVILLE, ILLINOIS 62062
PHONE (618) 288-4665
FAX (618) 288-4666

**PRINTED BY THE AUTHORITY
OF THE STATE OF ILLINOIS**



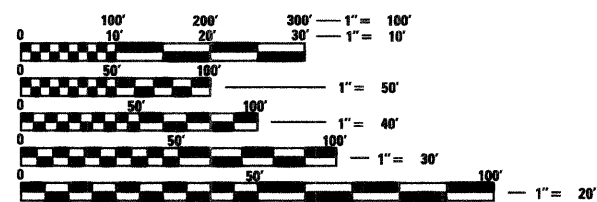
LOCATION MAP
HELVETIA TOWNSHIP



GROSS SECTION LENGTH = 5105.40 FEET = 0.97 MILES
NET SECTION LENGTH = 5105.40 FEET = 0.97 MILES



Brian R. Mueller
ILLINOIS PROFESSIONAL ENGINEER NO. 062-052018
EXP. 11-30-2009



FULL SIZE PLANS HAVE BEEN PREPARED USING STANDARD ENGINEERING SCALES. REDUCED SIZED PLANS WILL NOT CONFORM TO STANDARD SCALES. IN MAKING MEASUREMENTS ON REDUCED PLANS, THE ABOVE SCALES MAY BE USED.

J.U.L.I.E.
JOINT UTILITY LOCATION INFORMATION FOR EXCAVATION
1-800-892-0123
OR 811

PROJECT ENGINEER: PATTI LEBEAU (618) 346-3179
PROJECT MANAGER: CHERYL KEPLAR (618) 346-3186

CONTRACT NO. 76C35

FAP ROUTE 690 OTHER PRINCIPAL ARTERIAL
ADT: 7900 (2009) FAP ROUTE 690
5% TRUCKS