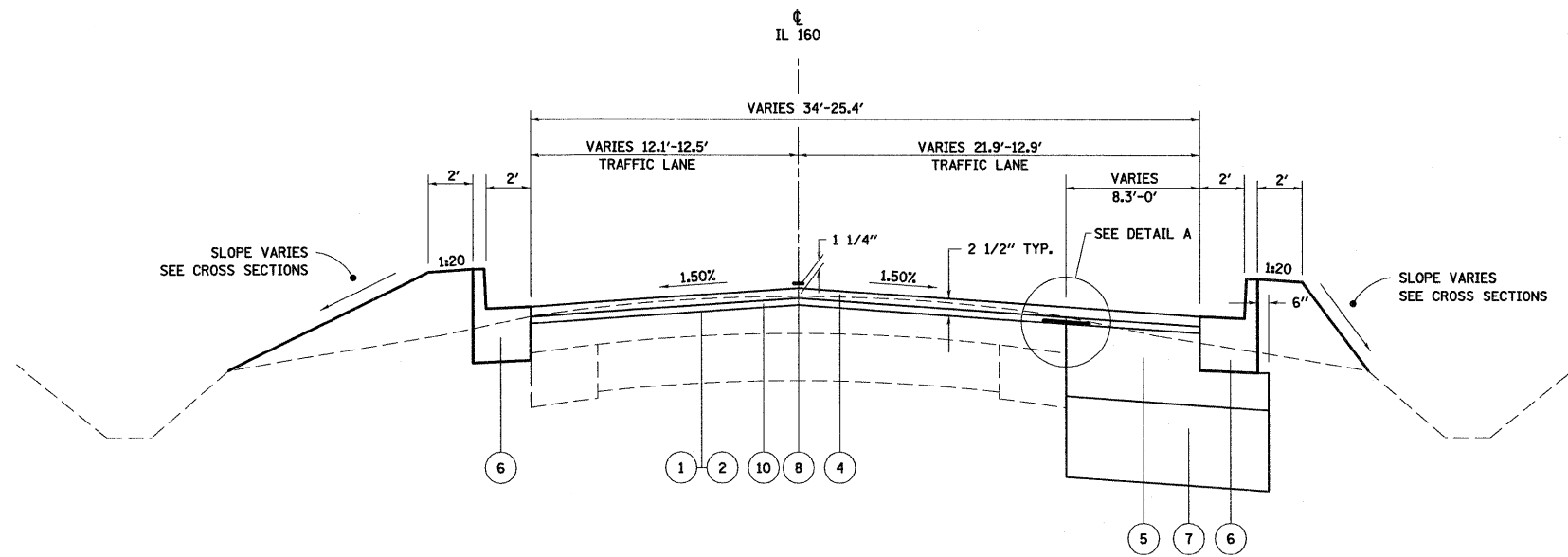
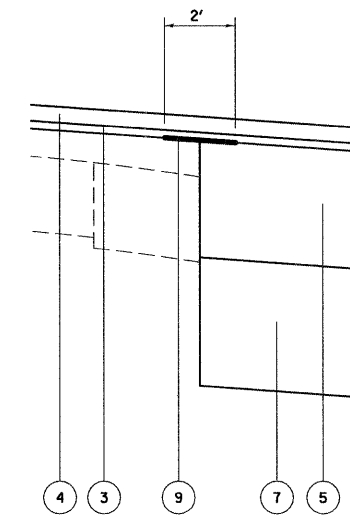


IL 160 SB (NEW TRENTON RD)  
TYPICAL SECTION  
STA 8+79.40 TO STA 9+48.31

- PROPOSED LEGEND**
- ① PROPOSED BITUMINOUS MATERIALS (PRIME COAT)
  - ② PROPOSED AGGREGATE PRIME COAT
  - ③ PROPOSED LEVELING BINDER (MACHINE METHOD) N70, 3/4" AND VARIES (1/2" TO 2 1/2")
  - ④ PROPOSED HOT-MIX ASPHALT SURFACE COURSE N70, 1 1/2" AND VARIES
  - ⑤ PROPOSED HOT-MIX ASPHALT BASE COURSE, IL-19.0, N70, 11"
  - ⑥ PROPOSED CURB AND GUTTER, TYPE B-6.24
  - ⑦ PROPOSED SUB-BASE GRANULAR MATERIAL, TYPE A 12"
  - ⑧ PROPOSED PAVEMENT MARKING, LINE 4"
  - ⑨ PROPOSED STRIP REFLECTIVE CRACK CONTROL TREATMENT
  - ⑩ PROPOSED LEVELING BINDER (MACHINE METHOD) N70, 1"



IL 160 SB (NEW TRENTON RD)  
TYPICAL SECTION  
STA 9+48.31 TO STA 10+07.28



DETAIL A

FILE NAME =	USER NAME = paul	DESIGNED - JWS	REVISED -	<b>STATE OF ILLINOIS DEPARTMENT OF TRANSPORTATION</b>	<b>PROPOSED TYPICAL SECTIONS - IL RTE 160 SB (NEW TRENTON RD.)</b>		F.A.P. RTE. 690	SECTION 41X-RS-1	COUNTY MADISON	TOTAL SHEETS 58	SHEET NO. 15
*FILEL*	PLOT SCALE = 20,0000' / IN.	DRAWN - WJS	REVISED -				SCALE:	SHEET NO. 6 OF 6 SHEETS	STA. TO STA.	FED. ROAD DIST. NO. ILLINOIS	FED. AID PROJECT
	PLOT DATE = 1/13/2009	CHECKED - BRM	REVISED -								
		DATE - 9-26-08	REVISED -								