

**EXISTING BROADWAY STREET
(FAP ROUTE 690)**

DESCRIPTION	COORDINATE	
	NORTHING	EASTING
POT STA 829+00.06	754415.61	432096.13
POT STA 842+44.14	754912.07	433345.16
PC STA 844+44.14	754985.94	433531.01
PI STA 846+44.14	755059.82	433716.86
PT STA 848+42.44	755090.34	433914.52
POT STA 849+49.02	755106.60	434019.85
POT STA 860+63.32	755126.54	435133.97
POT STA 886+18.92	755171.31	437689.18

EXISTING BEECH STREET

DESCRIPTION	COORDINATE	
	NORTHING	EASTING
POT STA 1+00.00	754893.19	433297.66
POT STA 1+59.71	754948.68	433275.60

EXISTING MULBERRY STREET

DESCRIPTION	COORDINATE	
	NORTHING	EASTING
POT STA 4+28.61	755041.62	434378.35
POT STA 5+00.00	755112.99	434377.08
POT STA 5+70.25	755183.23	434375.82

EXISTING WALNUT STREET

DESCRIPTION	COORDINATE	
	NORTHING	EASTING
POT STA 8+29.30	755055.25	435101.42
POT STA 9+00.00	755125.93	435100.16
POT STA 9+70.70	755196.62	435098.89

EXISTING WASHINGTON STREET

DESCRIPTION	COORDINATE	
	NORTHING	EASTING
POT STA 12+53.34	755092.02	435827.55
POT STA 13+00.00 (S)	755138.68	435826.73
POT STA 13+00.00 (N)	755138.62	435823.71
POT STA 13+48.59	755187.21	435822.86

EXISTING CHESTNUT STREET

DESCRIPTION	COORDINATE	
	NORTHING	EASTING
POT STA 3+00.00	755106.73	434027.45
POT STA 3+67.31	755174.03	434026.24

EXISTING PESTALOZZI STREET

DESCRIPTION	COORDINATE	
	NORTHING	EASTING
POT STA 6+23.93	755043.41	434740.47
POT STA 7+00.00	755119.47	434739.11
POT STA 7+76.07	755195.53	434737.75

EXISTING LAUREL STREET

DESCRIPTION	COORDINATE	
	NORTHING	EASTING
POT STA 10+52.55	755084.83	435462.04
POT STA 11+00.00 (S)	755132.27	435461.21
POT STA 11+00.00 (N)	755132.28	435461.87
POT STA 11+51.11	755183.38	435460.97

EXISTING PINE STREET

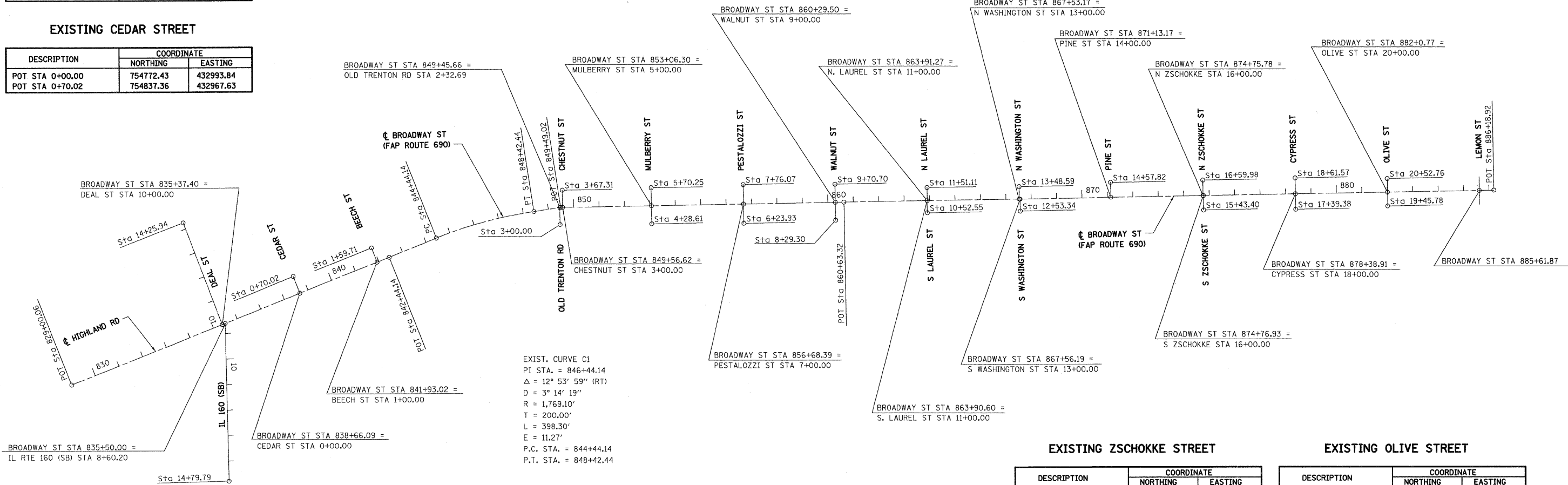
DESCRIPTION	COORDINATE	
	NORTHING	EASTING
POT STA 14+00.00	755144.93	436183.66
POT STA 14+57.82	755202.75	436182.65

EXISTING DEAL STREET

DESCRIPTION	COORDINATE	
	NORTHING	EASTING
POT STA 10+00.00	754651.02	432688.40
POT STA 14+25.94	755048.51	432535.33

EXISTING CEDAR STREET

DESCRIPTION	COORDINATE	
	NORTHING	EASTING
POT STA 0+00.00	754772.43	432993.84
POT STA 0+70.02	754837.36	432967.63



EXIST. CURVE C1
 PI STA. = 846+44.14
 $\Delta = 12^\circ 53' 59''$ (RT)
 $D = 3^\circ 14' 19''$
 $R = 1,769.10'$
 $T = 200.00'$
 $L = 398.30'$
 $E = 11.27'$
 P.C. STA. = 844+44.14
 P.T. STA. = 848+42.44

EXISTING ZSCHOKKE STREET

DESCRIPTION	COORDINATE	
	NORTHING	EASTING
POT STA 15+43.40	755094.71	436548.35
POT STA 16+00.00 (S)	755151.30	436547.36
POT STA 16+00.00 (N)	755151.28	436546.22
POT STA 16+59.98	755211.25	436545.17

EXISTING OLIVE STREET

DESCRIPTION	COORDINATE	
	NORTHING	EASTING
POT STA 19+45.78	755109.77	437272.13
POT STA 20+00.00	755163.98	437271.09
POT STA 20+52.76	755216.73	437270.09

EXISTING IL RTE 160 (SB)

DESCRIPTION	COORDINATE	
	NORTHING	EASTING
POT STA 8+60.20	754655.67	432700.10
POT STA 14+79.79	754036.24	432714.21

EXISTING OLD TRENTON ROAD

DESCRIPTION	COORDINATE	
	NORTHING	EASTING
POT STA 2+32.69	755106.09	434016.53
POT STA 3+00.00	755038.79	434017.73

EXISTING CYPRESS STREET

DESCRIPTION	COORDINATE	
	NORTHING	EASTING
POT STA 17+39.38	755097.04	436910.49
POT STA 18+00.00	755157.64	436909.29
POT STA 18+61.57	755219.20	436908.07

