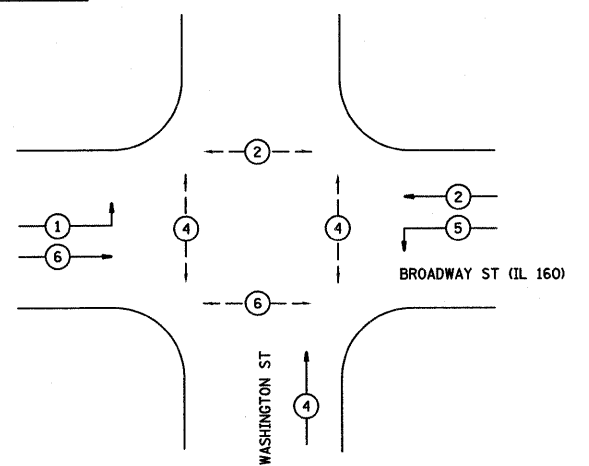


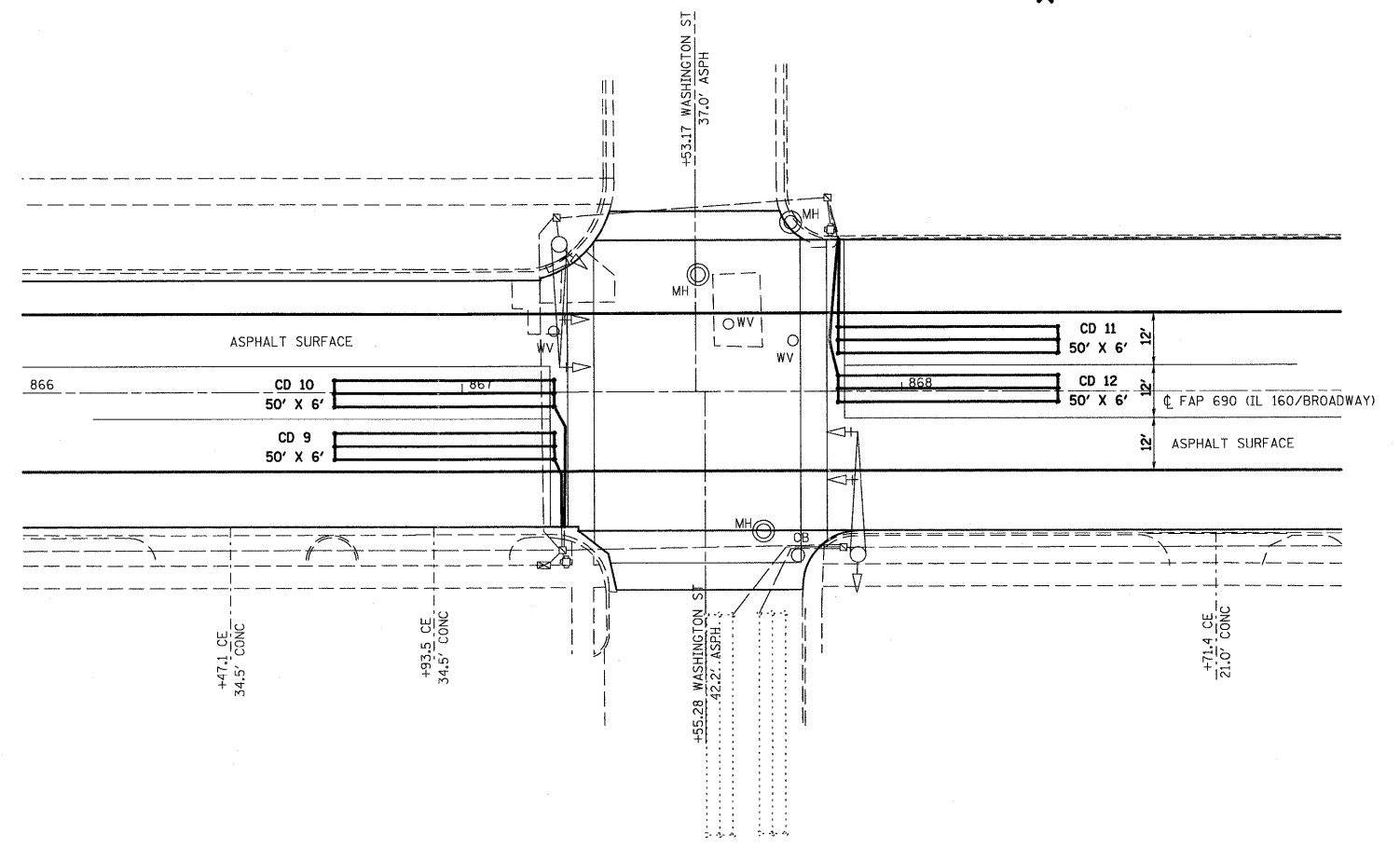
CABLE DIAGRAM

CABLE DIAGRAM LEGEND

- ELECTRIC CABLE IN CONDUIT
- - - EXISTING ELECTRIC CABLE IN CONDUIT
- S PROPOSED CABLE SPLICE (SEE GENERAL NOTES)
- 2/C ELECTRIC CABLE IN CONDUIT, NO. 14 2/C
- 5/C ELECTRIC CABLE IN CONDUIT, NO. 14 5/C
- 7/C ELECTRIC CABLE IN CONDUIT, NO. 14 7/C
- 2/C #6 AWG ELECTRIC CABLE IN CONDUIT, NO. 6 2/C (SERVICE)
- ID IN ELECTRIC CABLE LEAD-IN, 1 PAIR
- CD CALL DELAY (SEE GENERAL NOTES)
- CCO CALL CARRY OVER (SEE GENERAL NOTES)
- *6 INDICATES AMERICAN WIRE GAUGE (AWG) SIZE 6 CONDUCTORS (SEE GENERAL NOTES)



PHASE DESIGNATION DIAGRAM



DETECTOR LOOP REQUIREMENTS AND CALCULATIONS						
NO.	LOOP	PHASE	LOOP SIZE FT	REQ'D NO OF TURNS	CALCULATED INDUCTANCE (uH)	CALCULATED RESISTANCE (OHMS)
9	EB THRU CD	6	50 X 6	3-6-3	795.37	3.39
10	EB LT CD	1	50 X 6	3-6-3	798.08	3.45
11	WB THRU CD	2	50 X 6	3-6-3	831.08	4.20
12	WB LT CD	5	50 X 6	3-6-3	833.61	4.26

