

STATE OF ILLINOIS
 DEPARTMENT OF TRANSPORTATION
 DIVISION OF HIGHWAYS

**PROPOSED
 HIGHWAY PLANS**

FAP ROUTE: 788 (RELOCATED IL 3)
 DEMOLITION
 SECTION: 520-2-2DM7
 MADISON COUNTY
 C-98-013-09
 D-98-018-09

FOR INDEX OF SHEETS, SEE SHEET NO. 2

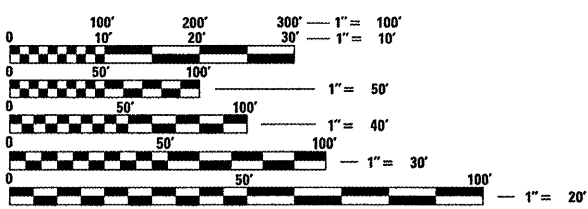
F.A. RTE.	SECTION	COUNTY	TOTAL SHEETS	SHEET NO.
788	520-2-2DM6-1	MADISON	5	1
FED. ROAD DIST. NO.	ILLINOIS	CONTRACT NO. 76C73		

D-98-066-00



LOCATION OF SECTION INDICATED THUS: - ■ -

FULL SIZE SCALES:
 PLAN 1" = 20'
 PROFILE HORIZ. 1" = 20'
 PROFILE VERT. 1" = 5'
 CROSS SECTIONS HORIZ. 1" = 10'
 CROSS SECTIONS VERT. 1" = 5'

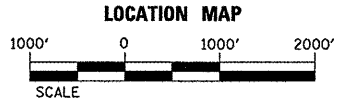
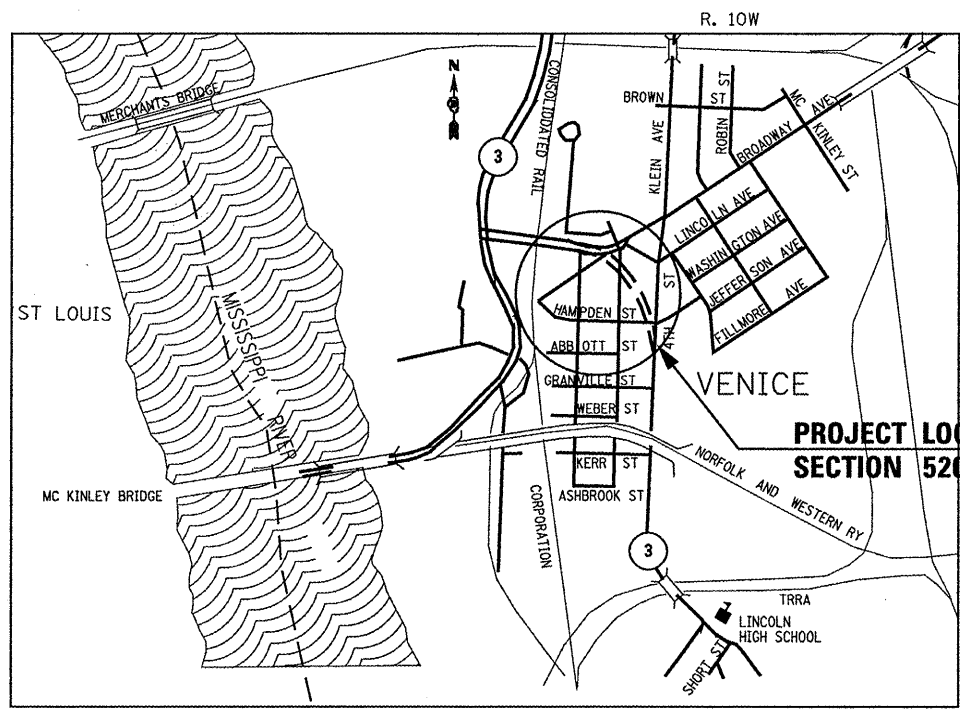


FULL SIZE PLANS HAVE BEEN PREPARED USING STANDARD ENGINEERING SCALES. REDUCED SIZED PLANS WILL NOT CONFORM TO STANDARD SCALES. IN MAKING MEASUREMENTS ON REDUCED PLANS, THE ABOVE SCALES MAY BE USED.

J.U.L.I.E.
 JOINT UTILITY LOCATION INFORMATION FOR EXCAVATION
 1-800-892-0123
 OR 811

PROJECT ENGINEER : MICHAEL D. PRITCHETT (618) 346-3180
 SQUAD LEADER : JANE CHASTAIN MERCER (618) 346-3206

CONTRACT NO. 76C73



FINAL PLANS
 JANUARY 9, 2009

PLANS PREPARED BY:
 JACOBS ENGINEERING GROUP, INC.
 501 NORTH BROADWAY
 ST. LOUIS, MO 63102

STATE OF ILLINOIS
 DEPARTMENT OF TRANSPORTATION
 DIVISION OF HIGHWAYS

SUBMITTED 1-15-2009
 Deputy Director of Highways, Region 5 Engineer
 March 27, 2009
 Engineer of Design and Environment
 March 27, 2009
 Director of Highways, Chief Engineer



Signature: *Todd A. Welz*
 DATE: 1/09/09
 LICENSE EXPIRES: 11/30/09

PRINTED BY THE AUTHORITY
 OF THE STATE OF ILLINOIS

01/14/2009
 Wednesday, January 14, 2009 @ 1:37:20 PM
 P:\C\13681\788\add\782\cvt\1\Demo Plans 12-19-08\3-n\title.dgn LV=11-643
 [BL] LV=
 REF - LOCATION