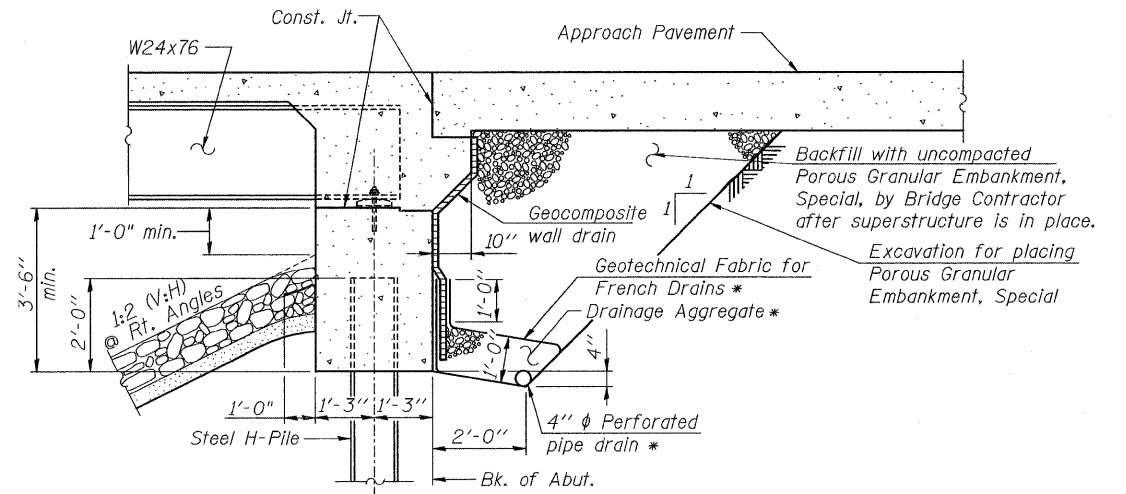


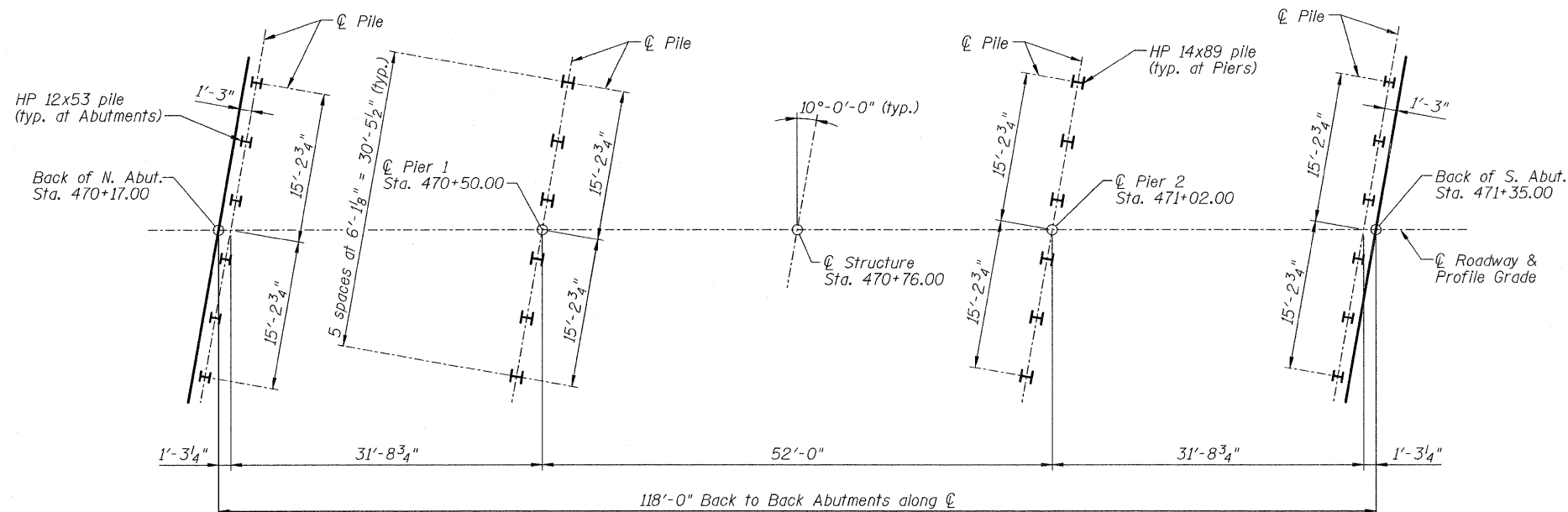
STATE OF ILLINOIS
DEPARTMENT OF TRANSPORTATION



SECTION THRU INTEGRAL ABUTMENT

*Included in the cost of Pipe Underdrains for Structures
Note:

All drainage system components shall extend to 2'-0" from the end of each wingwall except an outlet pipe shall extend until intersecting with the side slopes. The pipes shall drain into conc. headwalls (See Article 601.05 of the Std. Spec's and Hwy. Std. 601101).
Pile encasement not shown for clarity.



FOUNDATION LAYOUT

Note:
Pile encasement not shown for clarity.

DESIGNED - NK
CHECKED - CJW
DRAWN - JLR
CHECKED - CJW

**FOUNDATION LAYOUT
IL ROUTE 242 OVER
SHELTON CREEK
STATION 470+76**

SHEET NO. 3 26 SHEETS	F.A.P. RTE. 776	SECTION (102)B-1	COUNTY HAMILTON	TOTAL SHEETS 53	SHEET NO. 30
	S.N. 033-0053		CONTRACT NO. 78016		
FED. ROAD DIST. NO.		ILLINOIS	FED. AID PROJECT		

JACOBS