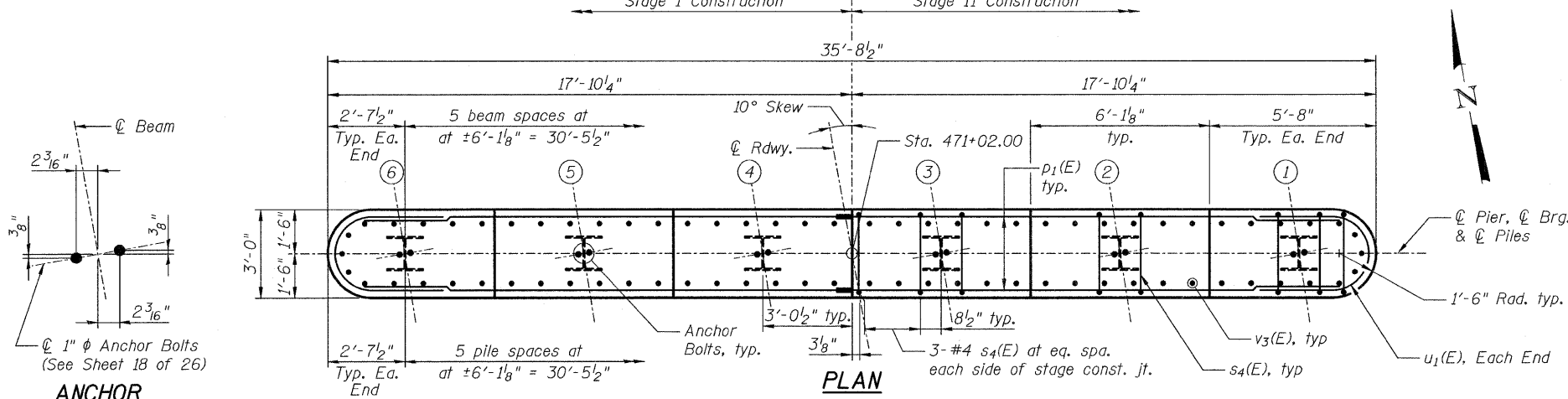
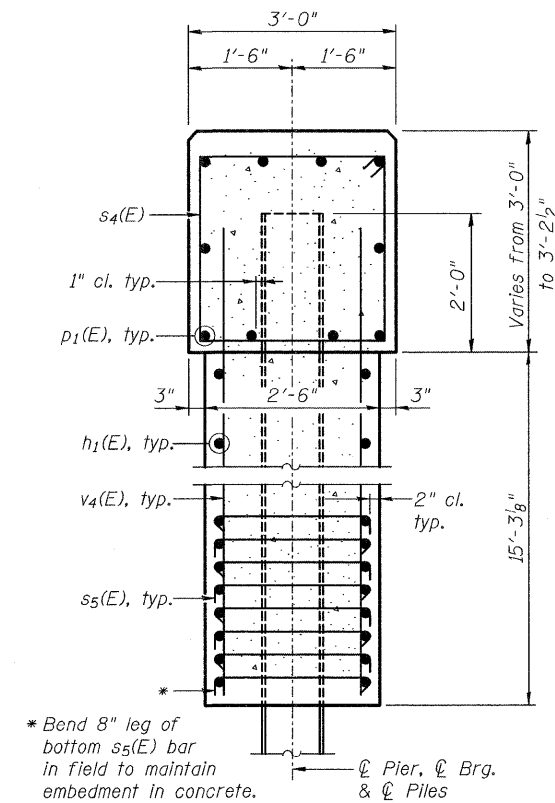
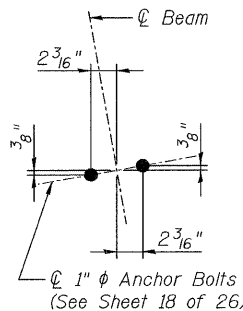


Note: Pour steps monolithically with cap.
Place reinforcement in cap to miss anchor bolts.

STATE OF ILLINOIS
DEPARTMENT OF TRANSPORTATION



ANCHOR BOLT LAYOUT



SEISMIC ANCHORAGE FOR PILES

PILE DATA

Type: Steel HP 14x89
Nominal Required Bearing: 705 kips
Factored Resistance Available: 251 kips
Est. Length: 58 ft
No. Production Piles: 5
No. Test Piles: 1

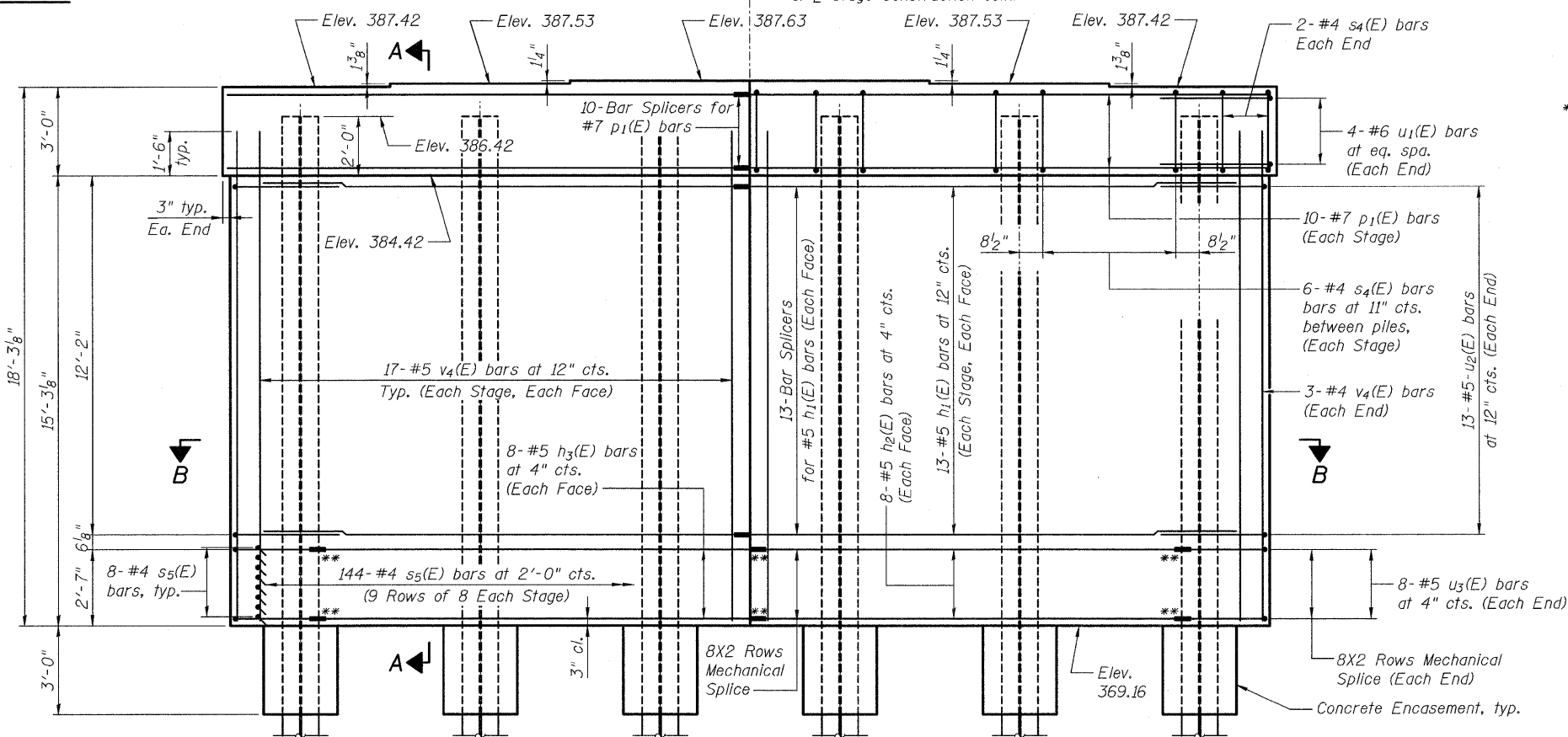
BILL OF MATERIAL

Bar	No.	Size	Length	Shape
h1(E)	52	#5	16'-2"	—
h2(E)	16	#5	14'-10"	—
h3(E)	16	#5	15'-10"	—
p1(E)	20	#7	16'-0"	—
s4(E)	34	#4	11'-8"	⊏
s5(E)	144	#4	3'-3"	⊏
u1(E)	8	#6	11'-2"	⊏
u2(E)	26	#5	7'-11"	⊏
u3(E)	16	#5	5'-5"	⊏
v4(E)	74	#5	16'-7"	—
Structure Excavation		Cu. Yd.	57.4	
Concrete Structures		Cu. Yd.	61.1	
Stud Shear Connectors		Each	48	
Reinforcement Bars, Epoxy Coated		Pound	4,340	
Bar Splicers		Each	36	
Furnishing Steel Piles, HP 14x89		Foot	290	
Driving Piles		Foot	290	
Test Pile Steel HP 14x89		Each	1	
Underwater Structure Excavation Protection Location 2		Each	1	
Pile Shoes		Each	6	
Concrete Encasement		Cu. Yd.	3.3	
Mechanical Splice		Each	48	

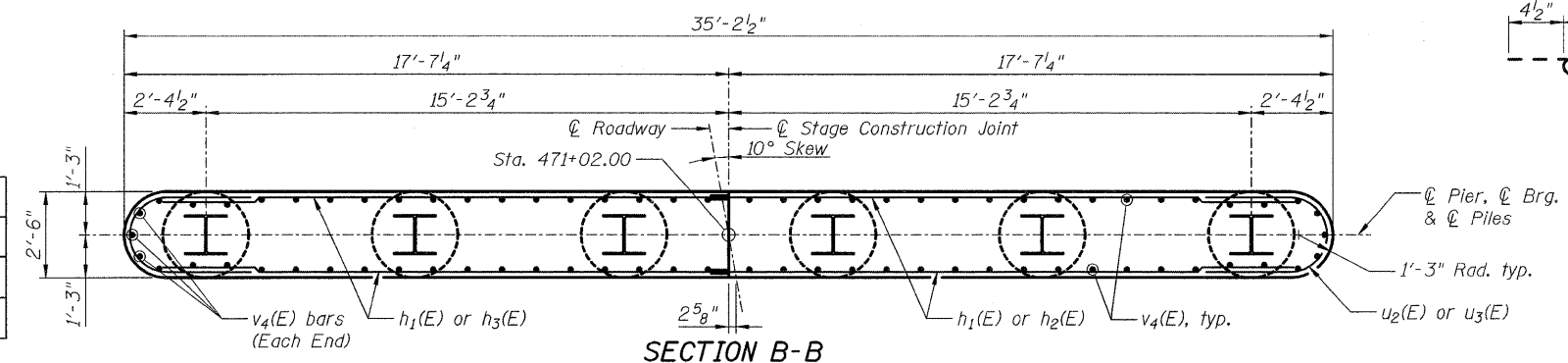
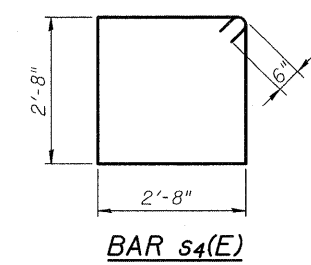
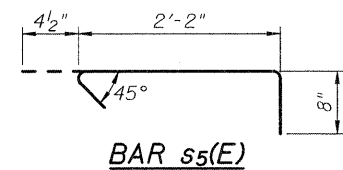
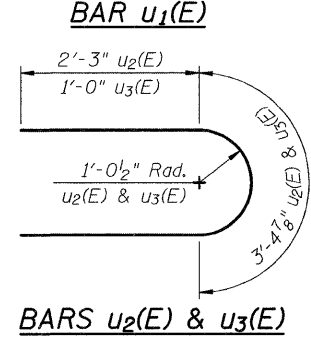
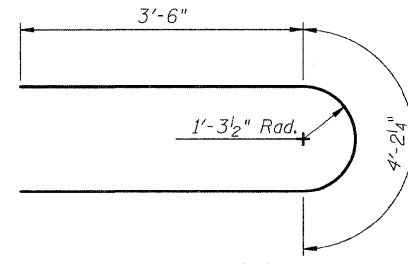
For details of Bar Splicers, see sheet 24 of 26.
For details of piles and Concrete Encasement, see sheet 23 of 26.

PIER 2 DETAILS
IL ROUTE 242 OVER
SHELTON CREEK
STATION 470+76

SHEET NO. 22 26 SHEETS	F.A.P. RTE. 776	SECTION (102)B-1	COUNTY HAMILTON	TOTAL SHEETS 53	SHEET NO. 49
	S.N. 033-0053		CONTRACT NO. 78016		
FED. ROAD DIST. NO.		ILLINOIS FED. AID PROJECT			



Note: h3(E) bars shall extend past the Stage I construction joint by a minimum of 6" to allow for attachment of mechanical splice.



DESIGNED	-	NK
CHECKED	-	CJW
DRAWN	-	CLS
CHECKED	-	CJW