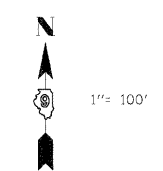
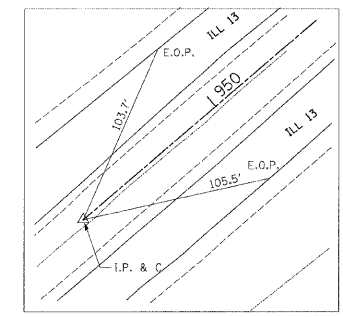
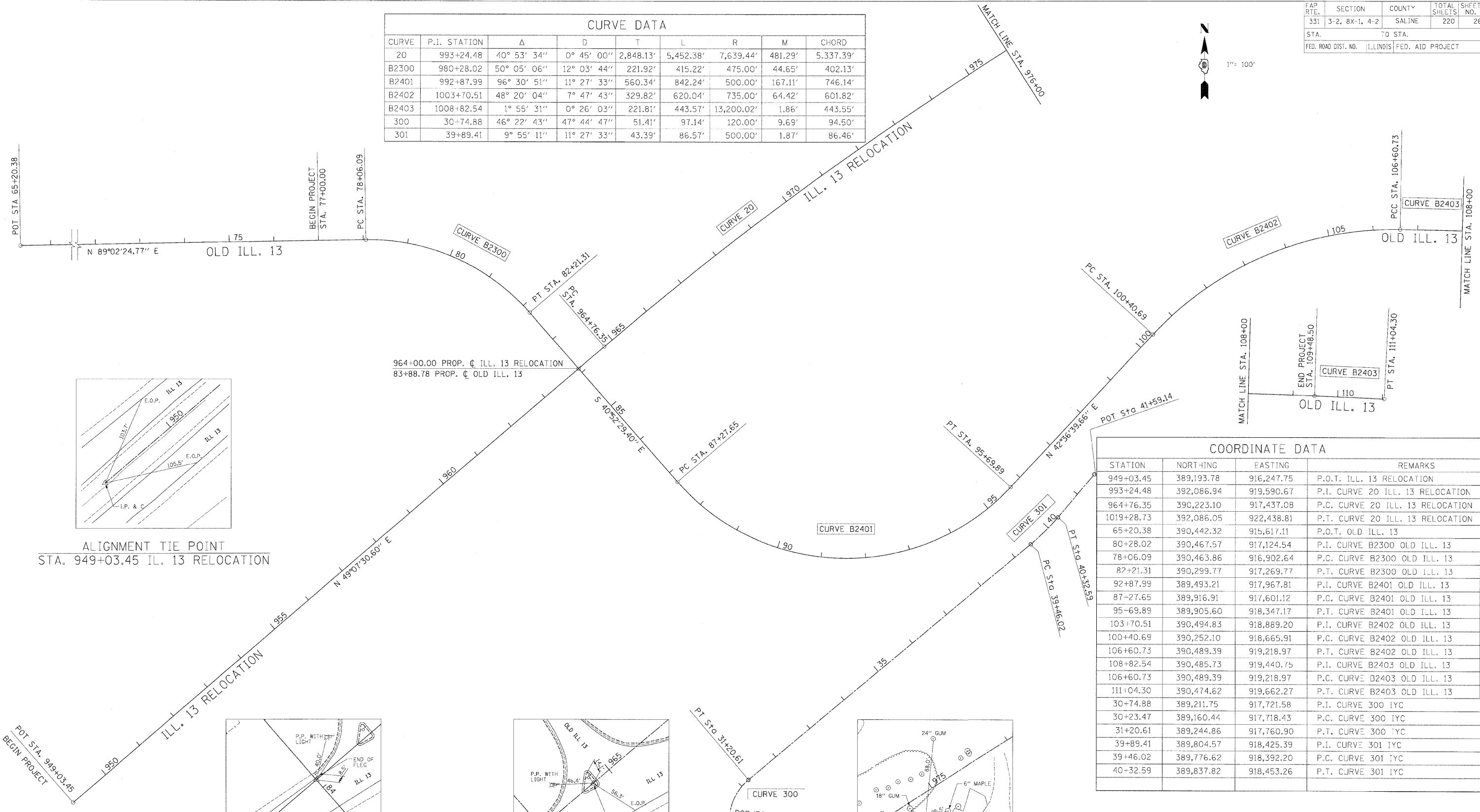


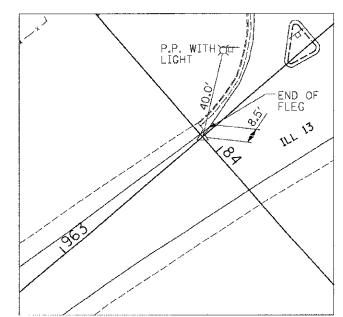
FAP RTE.	SECTION	COUNTY	TOTAL SHEETS	SHEET NO.
331	3-2, 8X-1, 4-2	SALINE	220	26
STA.		TO STA.		
FED. ROAD DIST. NO.		ILLINOIS	FED. AID PROJECT	



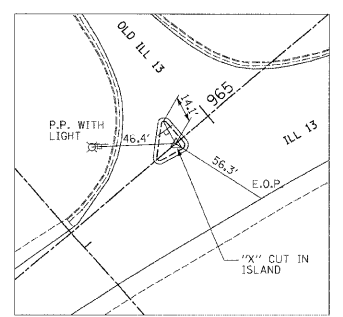
CURVE	P.I. STATION	Δ	D	T	L	R	M	CHORD
20	993+24.48	40° 53' 34"	0° 45' 00"	2,848.13'	5,452.38'	7,639.44'	481.29'	5,337.39'
B2300	980+28.02	50° 05' 06"	12° 03' 44"	221.92'	415.22'	475.00'	44.65'	402.13'
B2401	992+87.99	96° 30' 51"	11° 27' 33"	560.34'	842.24'	500.00'	167.11'	746.14'
B2402	1003+70.51	48° 20' 04"	7° 47' 43"	329.82'	620.04'	735.00'	64.42'	601.82'
B2403	1008+82.54	1° 55' 31"	0° 26' 03"	221.81'	443.57'	13,200.02'	1.86'	443.55'
300	30+74.88	46° 22' 43"	47° 44' 47"	51.41'	97.14'	120.00'	9.69'	94.50'
301	39+89.41	9° 55' 11"	11° 27' 33"	43.39'	86.57'	500.00'	1.87'	86.46'



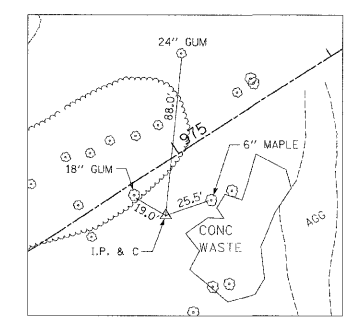
ALIGNMENT TIE POINT  
STA. 949+03.45 IL. 13 RELOCATION



ALIGNMENT TIE POINT  
964+00.00 PROP. C ILL. 13 RELOCATION =  
83+88.78 PROP. C OLD ILL. 13



ALIGNMENT TIE POINT  
STA. 964+76.35 IL. 13 RELOCATION



ALIGNMENT TIE POINT  
STA. 974+75, 25.00' RT. ILL. 13 RELOCATION

STATION	NORTHING	EASTING	REMARKS
949+03.45	389,193.78	916,247.75	P.O.T. ILL. 13 RELOCATION
993+24.48	392,086.94	919,590.67	P.I. CURVE 20 ILL. 13 RELOCATION
964+76.35	390,223.10	917,437.08	P.C. CURVE 20 ILL. 13 RELOCATION
1019+28.73	392,086.05	922,438.81	P.T. CURVE 20 ILL. 13 RELOCATION
65+20.38	390,442.32	915,617.11	P.O.T. OLD ILL. 13
80+28.02	390,467.57	917,124.54	P.I. CURVE B2300 OLD ILL. 13
78+06.09	390,463.86	916,902.64	P.C. CURVE B2300 OLD ILL. 13
82+21.31	390,299.77	917,269.77	P.T. CURVE B2300 OLD ILL. 13
92+87.99	389,493.21	917,967.81	P.I. CURVE B2401 OLD ILL. 13
87-27.65	389,916.91	917,601.12	P.C. CURVE B2401 OLD ILL. 13
95-69.89	389,905.60	918,347.17	P.T. CURVE B2401 OLD ILL. 13
103+70.51	390,494.83	918,889.20	P.I. CURVE B2402 OLD ILL. 13
100+40.69	390,252.10	918,665.91	P.C. CURVE B2402 OLD ILL. 13
106+60.73	390,489.39	919,218.97	P.T. CURVE B2402 OLD ILL. 13
108+82.54	390,485.73	919,440.75	P.I. CURVE B2403 OLD ILL. 13
106+60.73	390,489.39	919,218.97	P.C. CURVE B2403 OLD ILL. 13
111+04.30	390,474.62	919,662.27	P.T. CURVE B2403 OLD ILL. 13
30+74.88	389,211.75	917,721.58	P.I. CURVE 300 IYC
30+23.47	389,160.44	917,718.43	P.C. CURVE 300 IYC
31+20.61	389,244.86	917,760.90	P.T. CURVE 300 IYC
39+89.41	389,804.57	918,425.39	P.I. CURVE 301 IYC
39+46.02	389,776.62	918,392.20	P.C. CURVE 301 IYC
40+32.59	389,837.82	918,453.26	P.T. CURVE 301 IYC

**U. S. ROUTE 45  
ALIGNMENT & TIES  
STA. 949+03.45 TO STA. 976+00.00  
ILL. 13 RELOCATION  
STA. 65+20.38 TO STA. 111+04.30  
INCL. OLD ILL. 13**

CHECKED BY BAW PLOT DATE 2/2/2009  
DRAWN BY DMS PLOT SCALE 1/8\"/>

M:\PROJECTS\PROJ3526\ROADWAY\COMMON\  
Active Files  
001-352665.dgn