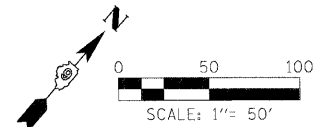
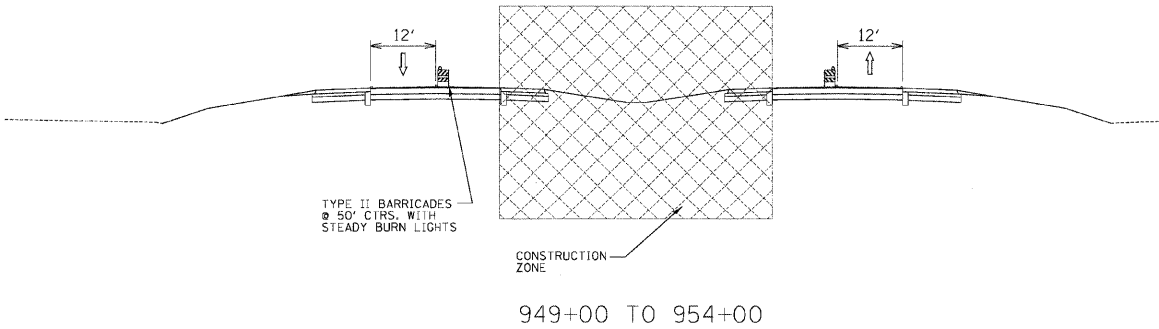
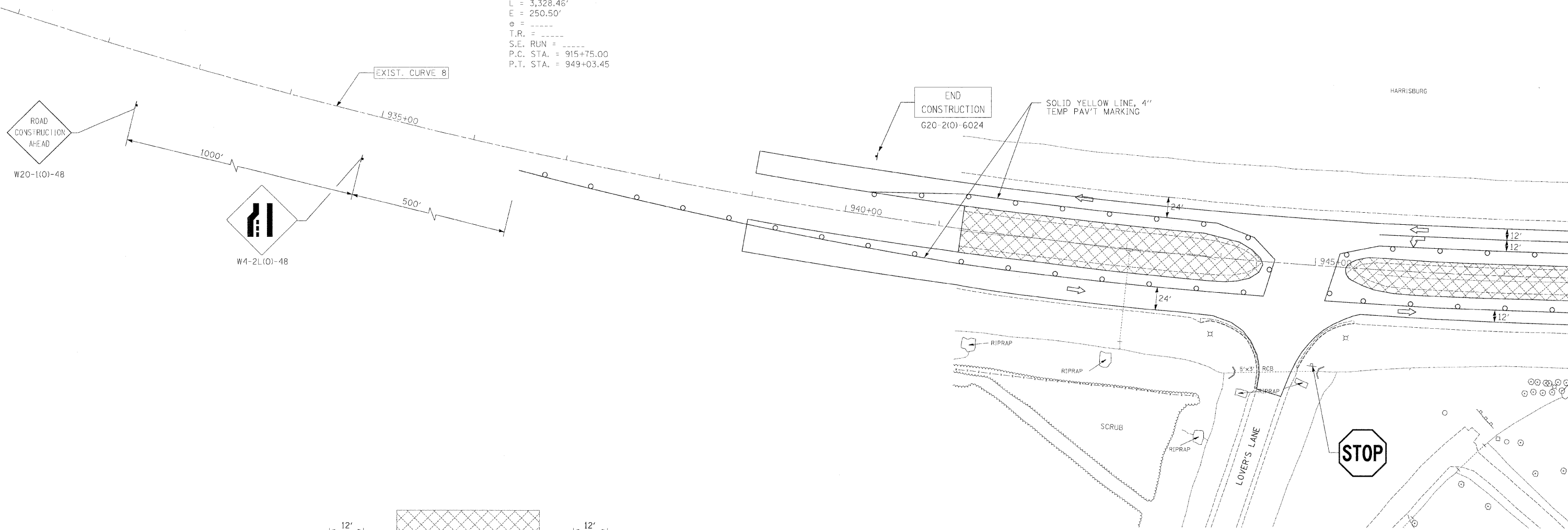


FAP RTE.	SECTION	COUNTY	TOTAL SHEETS	SHEET NO.
331	3-2, BX-1, 4-2	SALINE	220	43
STA.		TO S.I.A.		
FED. ROAD DIST. NO.	ILLINOIS	FED. AID PROJECT		



EXIST. CURVE 8  
 PI STA. = 932+87.66  
 $\Delta = 33^\circ 17' 04''$  (LT)  
 $D = 1^\circ 00' 00''$   
 $R = 5,729.58'$   
 $T = 1,712.67'$   
 $L = 3,328.46'$   
 $E = 250.50'$   
 $e =$   
 $T.R. =$   
 $S.E. RUN =$   
 $P.C. STA. = 915+75.00$   
 $P.T. STA. = 949+03.45$



NOTE:  
 ALL EXISTING PAVEMENT MARKINGS  
 THAT CONFLICT WITH NEW TRAFFIC  
 PATTERN SHALL BE REMOVED.

LEGEND:

	WORK ZONE
	TEMPORARY PAVEMENT
	BARRICADE, TYPE III
	BARRICADE, TYPE II OR DRUMS

CHECKED BY: BJR  
 PLOT DATE: 7/2/2009  
 DRAWN BY: DMS  
 PLOT SCALE: 1/4" = 50'

M:\PROJECTS\PROJECTS\ROADWAY\COMMON\Reference Files  
 Active File: 101819256-01113.dgn