

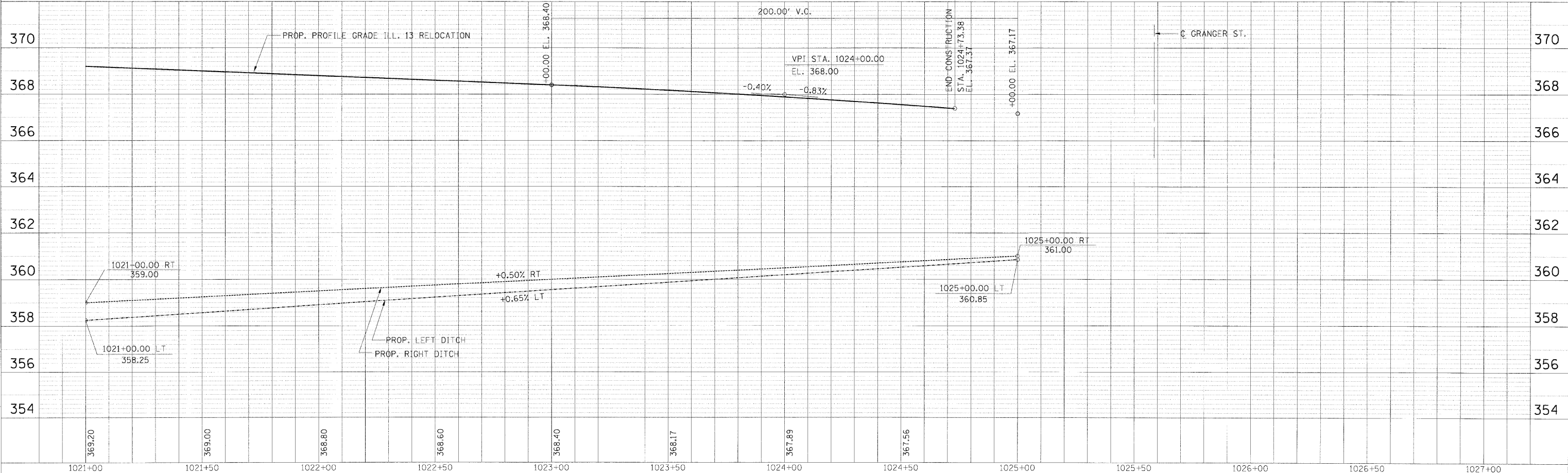
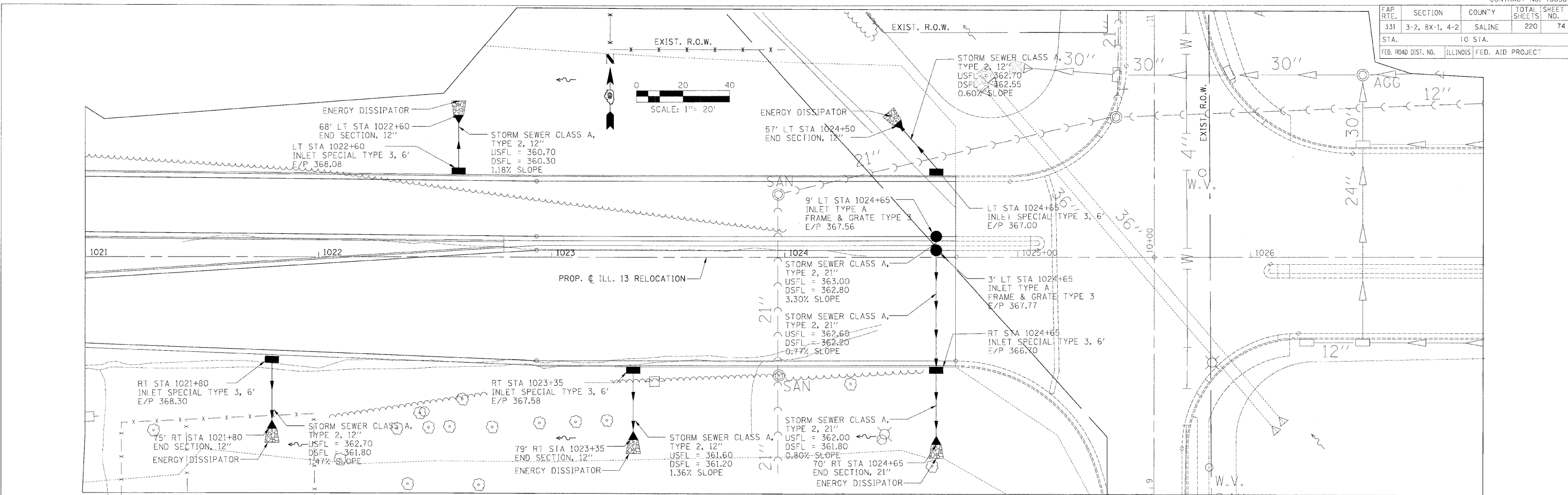
FAP RTE.	SECTION	COUNTY	TOTAL SHEETS	SHEET NO.
331	3-2, BX-1, 4-2	SALINE	220	74
STA.		10 STA.		
FED. ROAD DIST. NO.		ILLINOIS FED. AID PROJECT		

DATE: 02/23/10
 BY: [Signature]
 CHECKED: [Signature]
 PLAN NO. 1011
 PROJECT: ILL. 13 RELOCATION

DRAWN BY: [Signature]
 CHECKED BY: [Signature]
 PLAN & PROFILE CHECKED BY: [Signature]

DATE: 02/23/10
 BY: [Signature]
 CHECKED: [Signature]
 PROFILE NO. 1011
 PROJECT: ILL. 13 RELOCATION

M:\PROJECTS\PROJECTS\ROADWAY\COMMON\Reference Files
 Active File: 1021-1027.dgn
 Paper: 20-3526c6.dgn
 Plot: 20-3526c6.dgn



STORM SEWER PLAN PROFILE - STA. 1021+00.00 TO STA. 1024+73.38