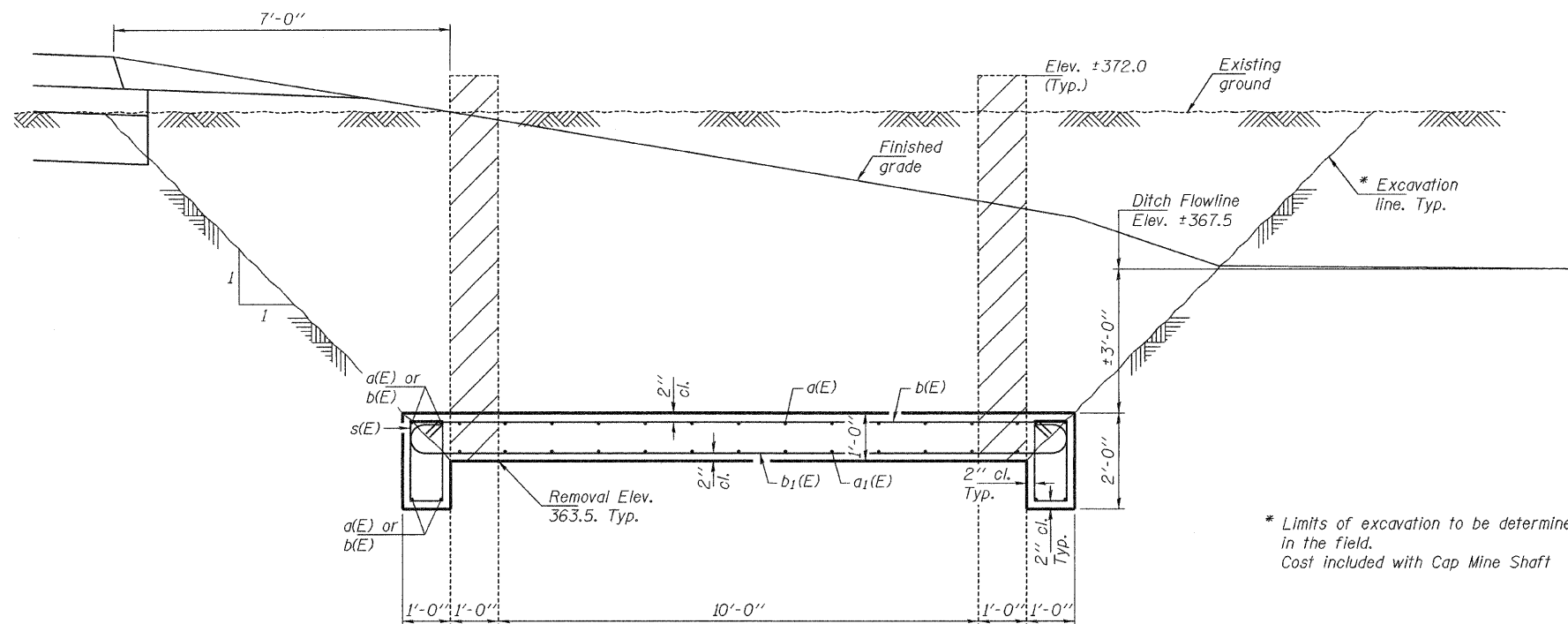
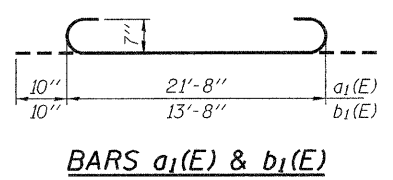
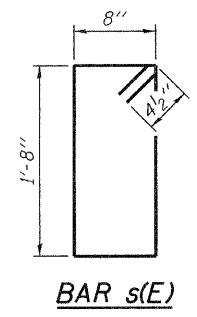


STATE OF ILLINOIS
DEPARTMENT OF TRANSPORTATION



* Limits of excavation to be determined in the field.
Cost included with Cap Mine Shaft



SECTION THRU SHAFT
Hatched areas indicate concrete removal

GENERAL NOTES

Reinforcement bars shall conform to the requirements of ASTM A 706 Gr 60. See Special Provisions.
Reinforcement bars designated (E) shall be epoxy coated.
Plan dimensions and details relative to existing plans are subject to nominal construction variations. The Contractor shall field verify existing dimensions and details affecting new construction and make necessary approved adjustments prior to construction or ordering of materials. Such variations shall not be cause for additional compensation for a change in scope of the work, however, the Contractor will be paid for the quantity actually furnished at the unit price bid for the work.

MATERIAL LIST
(For information only)

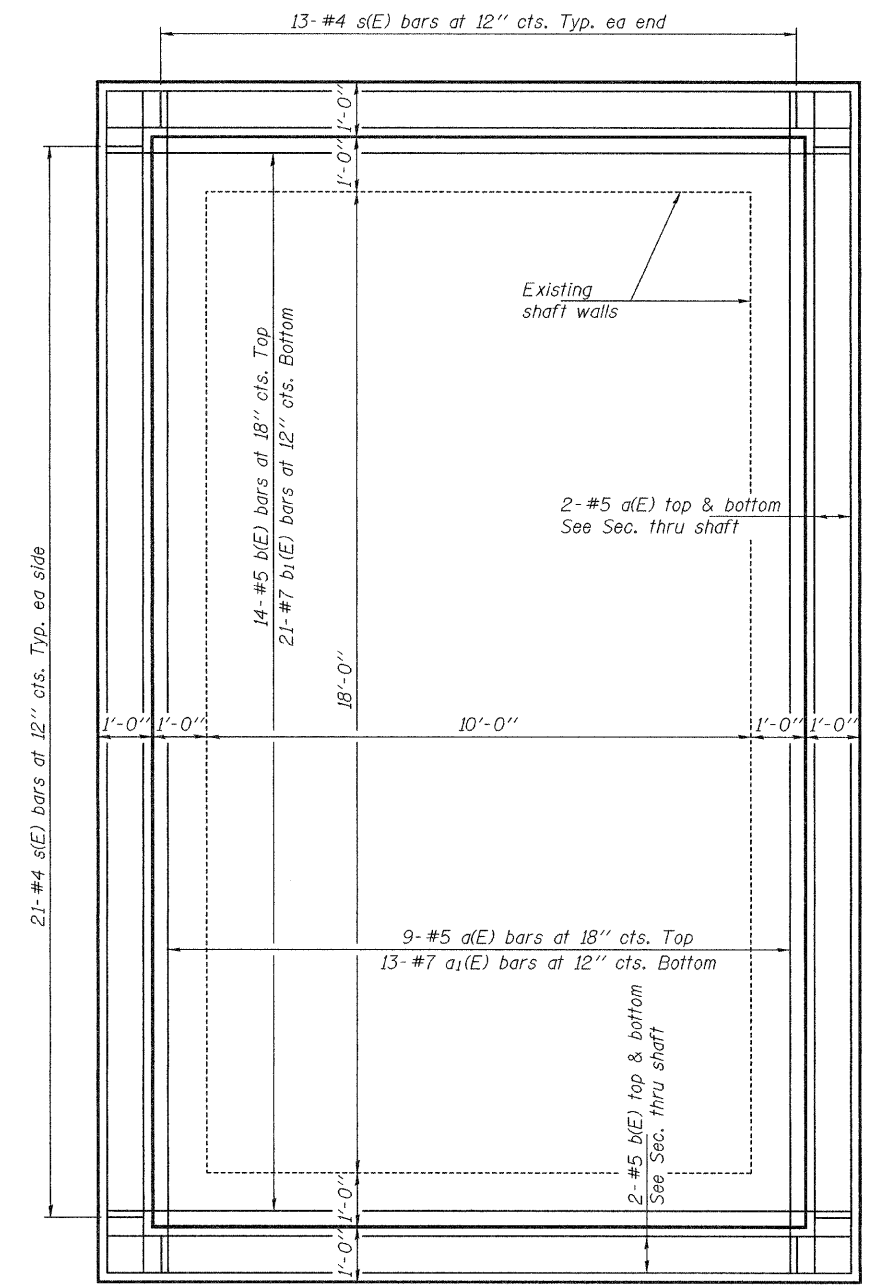
Bar	No.	Size	Length	Shape
a(E)	17	#5	21'-8"	—
a ₁ (E)	13	#7	23'-4"	—
b(E)	22	#5	13'-8"	—
b ₁ (E)	21	#7	15'-4"	—
s(E)	68	#4	5'-5"	—
Concrete Structures			Cu. Yd.	13.9
Concrete Removal			Cu. Yd.	17.8
Reinforcement Bars, Epoxy Coated			Pound	2220

DESIGN STRESSES

f'_c = 3,500 psi
f_y = 60,000 psi (Reinforcement)

BILL OF MATERIAL

Item	Unit	Quantity
Cap Mine Shaft	Each	1



PLAN

**10'-0" X 18'-0" VENT SHAFT CAP
STA. 976+80**

DESIGNED *Victor H. Veliz*
CHECKED *Rain Polin*
DRAWN *baliva*
CHECKED *VHV*

MARCH 20, 2009
EXAMINED *[Signature]*
PASSED *[Signature]*
ENGINEER OF STRUCTURAL SERVICES
ENGINEER OF BRIDGES AND STRUCTURES



EXPIRES 11-30-2010

SHEET NO. 1	F.A.P. RTE.	SECTION	COUNTY	TOTAL SHEETS	SHEET NO.
2 SHEETS	331	3-2, (8X-1)B, 4-2	SALINE	220	87
CONTRACT NO. 78058					
FED. ROAD DIST. NO. ILLINOIS FED. AID PROJECT					