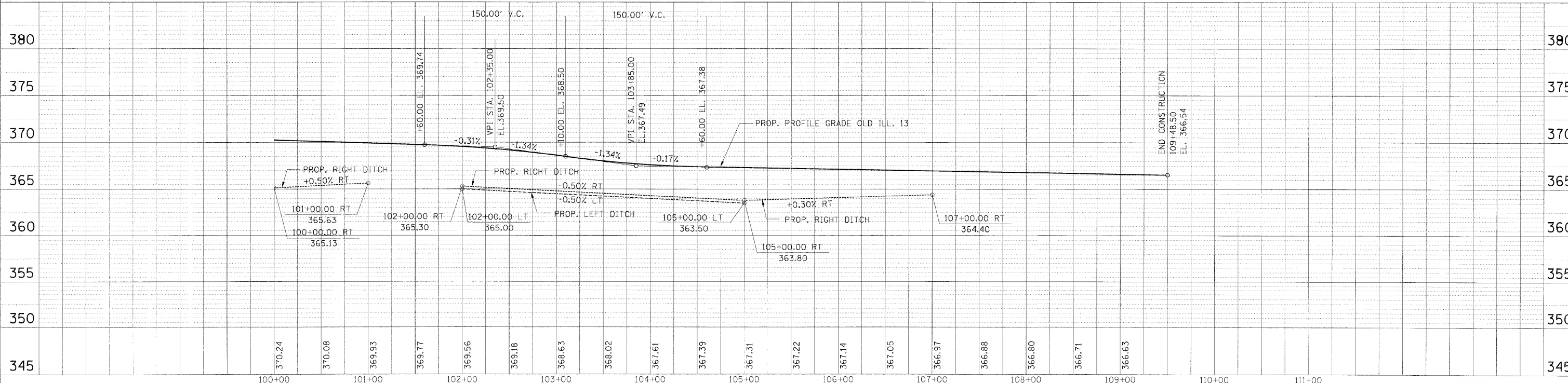
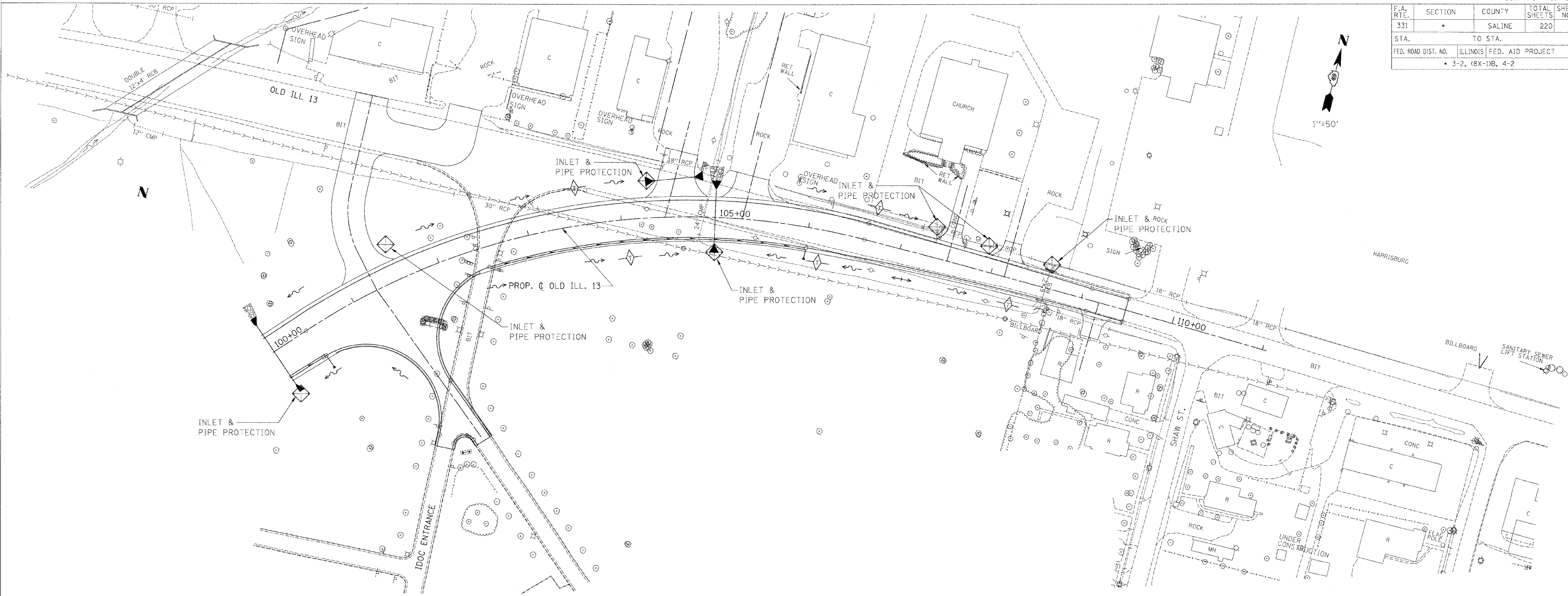


F.A. RTE.	SECTION	COUNTY	TOTAL SHEETS	SHEET NO.
331		SALINE	220	99
STA.		TO STA.		
FED. ROAD DIST. NO.		ILLINOIS FED. AID PROJECT		
• 3-2, 18X-11B, 4-2				



DATE: 09/23/03  
 BY: JMC  
 CHECKED: JMC  
 APPROVED: JMC

PLANNING: JMC  
 DESIGN: JMC  
 CONSTRUCTION: JMC

REVISIONS:  
 NO. DATE DESCRIPTION

DRAWN BY: JMC  
 CHECKED BY: JMC  
 PLAN & PROFILE CHECKED BY: JMC

DATE: 09/23/03  
 BY: JMC  
 CHECKED: JMC  
 APPROVED: JMC

PROFILES: JMC  
 GRADES: JMC  
 STRUCTURES: JMC

M:\PROJECTS\PROJECTS\ROADWAY\CONWAY\Reference Files  
 Active File: exp0005-0003.dgn

TEMPORARY EROSION PLAN - OLD ILL.13 - STA. 100+00.00 TO STA. 109+48.50