

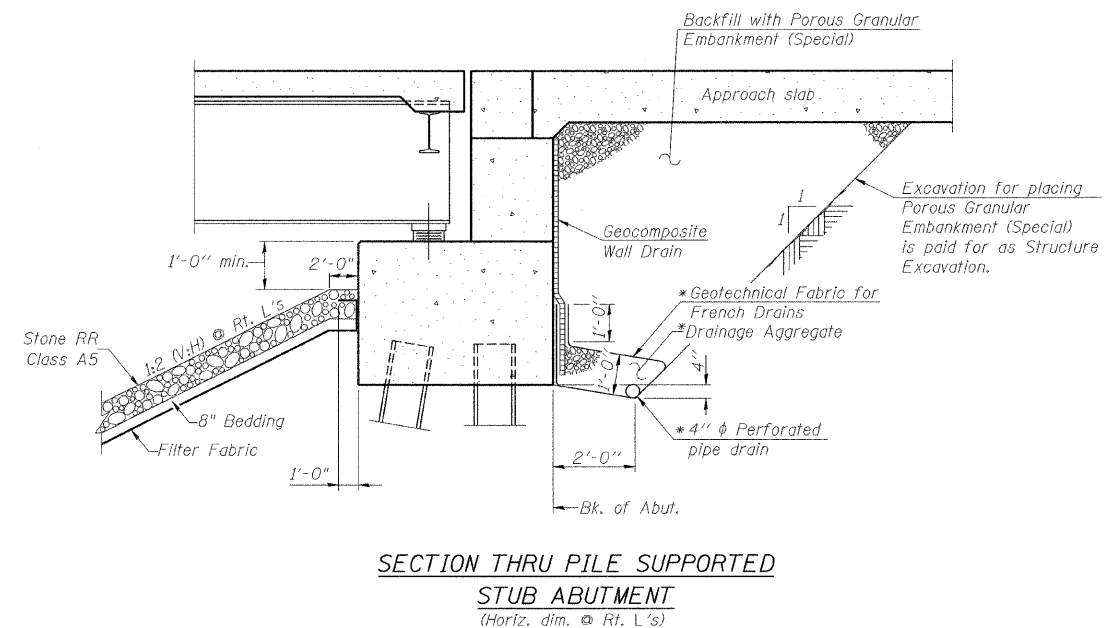
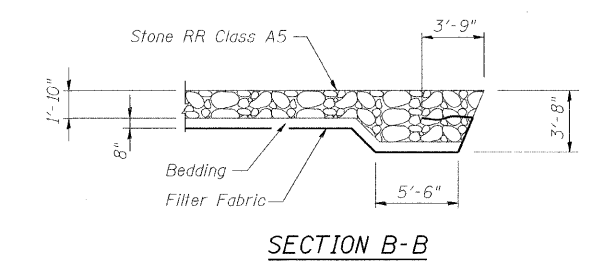
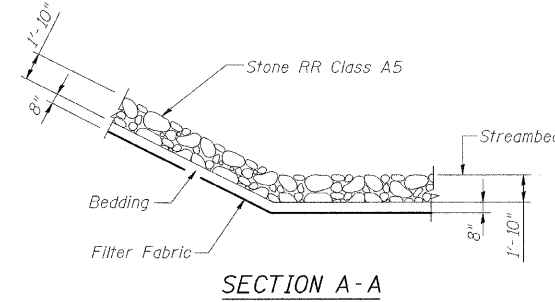
**GENERAL NOTES**

- Fasteners shall be AASHTO M164 Type 1, mechanically galvanized bolts. Bolts 7/8-in.  $\phi$ , holes 15/16-in.  $\phi$ , unless otherwise noted.
- Calculated weight of Structural Steel AASHTO M 270 GR 50 = 298,210 lbs.
- All structural steel shall be AASHTO M 270 Grade 50.
- No field welding is permitted except as specified in the contract documents.
- Reinforcement bars shall conform to the requirements of ASTM A 706 Gr 60. See Special Provisions.
- Reinforcement bars designated (E) shall be epoxy coated.
- Bearing seat surfaces shall be constructed or adjusted to the designated elevations within a tolerance of 1/8 inch. Adjustment shall be made either by grinding the surface or by shimming the bearings.
- Concrete Sealer shall be applied to the seats, front face and backwall of the abutments.
- The Inorganic Zinc-rich Primer/Acrylic/Acrylic Paint System shall be used for shop and field painting of new structural steel except where otherwise noted. The color of the final finish coat for all interior steel surfaces shall be gray, Munsell No 5B 7/1. The color of the final finish coat for the exterior and bottom flange of the fascia beams shall be Interstate Green, Munsell No 7.5G 4/8. See special provision for "Cleaning and Painting New Metal Structures."
- Layout of slope protection system may be varied to suit ground conditions in the field as directed by the Engineer.
- The embankment configuration shown shall be the minimum embankment that must be placed and compacted prior to construction of the abutments.
- The Contractor shall drive test piles to 110% of the nominal required bearing specified in production locations at substructures specified or approved by the Engineer before ordering the remainder of piles.
- All cross frames or diaphragms shall be installed as steel is erected and secured with erection pins and bolts except as otherwise noted. Individual cross frames or diaphragms at supports may be temporarily disconnected to install bearing anchor rods.
- Load carrying components designated "NTR" shall conform to the Supplemental Requirements for Notch Toughness, Zone 2.
- Two 1/8" adjusting shims shall be provided for each bearing in addition to all other plates or shims and placed as shown on bearing details.
- Slipforming of the parapets is not allowed.

DESIGNED	WJZ / EJB
CHECKED	MRB/KMP
DRAWN	EJB
CHECKED	MRB/KMP

**TOTAL BRIDGE BILL OF MATERIAL**

	UNIT	SUPER	SUB	TOTAL
POROUS GRANULAR EMBANKMENT, SPECIAL	CU YD		458	458
STONE RIPRAP, CLASS A5	SQ YD		4,654	4,654
FILTER FABRIC	SQ YD		5,137	5,137
REMOVAL OF EXISTING STRUCTURES	EACH		1	1
STRUCTURE EXCAVATION	CU YD		359	359
FLOOR DRAINS	EACH	16		16
CONCRETE STRUCTURES	CU YD		695	695
CONCRETE SUPERSTRUCTURE	CU YD	809.5		809.5
BRIDGE DECK GROOVING	SQ YD	2,078		2,078
CONCRETE ENCASEMENT	CU YD		51.2	51.2
PROTECTIVE COAT	SQ YD	2,556		2,556
FURNISHING AND ERECTING STRUCTURAL STEEL	L. SUM		1	1
STUD SHEAR CONNECTORS	EACH	4,464		4,464
REINFORCEMENT BARS, EPOXY COATED	POUND	198,230	57,660	255,890
BAR SPLICERS	EACH	242		242
FURNISHING STEEL PILES HP14X73	FOOT		6,356	6,356
DRIVING PILES	FOOT		6,356	6,356
TEST PILE STEEL HP14X73	EACH		2	2
NAME PLATES	EACH	1		1
PREFORMED JOINT STRIP SEAL	FOOT	242		242
ELASTOMERIC BEARING ASSEMBLY, TYPE II	EACH	12		12
ANCHOR BOLTS 1"	EACH		24	24
ANCHOR BOLTS 1 1/4"	EACH		48	48
ANCHOR BOLTS 1 1/2"	EACH		24	24
CONCRETE SEALER	SQ FT		2,778	2,778
GEOCOMPOSITE WALL DRAIN	SQ YD		233	233
PIPE UNDERDRAINS FOR STRUCTURES 4"	FOOT		288	288
UNDERWATER STRUCTURE EXCAVATION PROTECTION, LOCATION 1	EACH		1	1
UNDERWATER STRUCTURE EXCAVATION PROTECTION, LOCATION 2	EACH		1	1



\*Included in the cost of Pipe Underdrains for Structures.

Note:  
All drainage system components shall extend parallel to the abutment back wall until they intersect the wingwalls or 2'-0" from the end of the wingwalls when the wings are parallel to the abutment. The pipe shall extend under the wingwall, if necessary, until intersecting the side slopes. The pipes shall drain into concrete headwalls. (See Article 601.05 of the Standard Specifications and Highway Standard 601101).

ROUTE NO.	SECTION	COUNTY	TOTAL SHEETS	SHEET NO.
F.A.P. 331	(8X-1)B	SALINE CO.	220	119
STA.		TO STA.		
F.H.W.A. REGION		ILLINOIS	PROJECT	

Contract # 78058

**INDEX OF DRAWINGS**

- | SHEET # | SHEET NAME   |
|---------|--|
| S1      | General Plan and Elevation                           |
| S2      | General Notes, Drawing Index, Total Bill of Material |
| S3      | Foundation Layout                                    |
| S4      | Deck Screed Plan                                     |
| S5      | Deck Elevations                                      |
| S6      | Deck Elevations                                      |
| S7      | Deck Reinforcement Plan                              |
| S8      | Deck Cross Section                                   |
| S9      | Deck Details   |
| S10     | Parapet Elevations & Details                         |
| S11     | Preformed Joint Strip Seal                           |
| S12     | Framing Plan and Beam Elevation                      |
| S13     | Structural Steel Details                             |
| S14     | Bearing Details                                      |
| S15     | West Abutment Plan and Elevation                     |
| S16     | West Abutment Wingwalls and Details                  |
| S17     | East Abutment Plan and Elevation                     |
| S18     | East Abutment Wingwalls and Details                  |
| S19     | Pier 1 and 2 Details                                 |
| S20     | HP Pile Details                                      |
| S21     | Bar Splicer Assembly Details                         |
| S22     | Top of West Approach Slab Elevations                 |
| S23     | Top of East Approach Slab Elevations                 |
| S24     | Bridge Approach Slab Details (1 of 2)                |
| S25     | Bridge Approach Slab Details (2 of 2)                |
| S26     | Soil Borings   |
| S27     | Soil Borings   |

STATION 1013+38.50  
BUILT 200\_ BY  
STATE OF ILLINOIS  
F.A.P 331 SEC. (8X-1) B  
LOADING HS20-44  
STR. NO. 083-0060

**NAME PLATE**  
See Std. 515001

ILLINOIS DEPARTMENT OF TRANSPORTATION  
RELOCATED ILLINOIS ROUTE 13 OVER  
HARRISBURG DITCH  
F.A.P. 331 SECTION (8X-1)B  
**GENERAL NOTES, DRAWING INDEX,  
TOTAL BILL OF MATERIAL**  
SN: 083-0060  
SALINE CO., IL.  
STA. 1013+38.50  
DATE: FEB 4, 2009

**benesch**  
alfred benesch & company  
Engineers • Surveyors • Planners  
205 North Michigan Avenue, Suite 2400  
Chicago, Illinois 60601  
312-565-0450  
JOB NO. 3526