

ROUTE NO.	SECTION	COUNTY	TOTAL SHEETS	SHEET NO.
F.A.P. 331	(8X-1)B	SALINE CO.	220	133
STA.		TO STA.		
F.H.W.A. REGION		ILLINOIS	PROJECT	

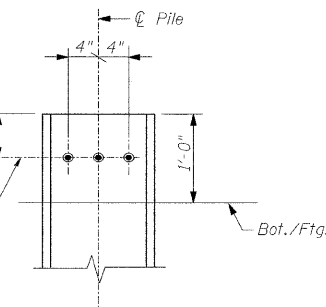
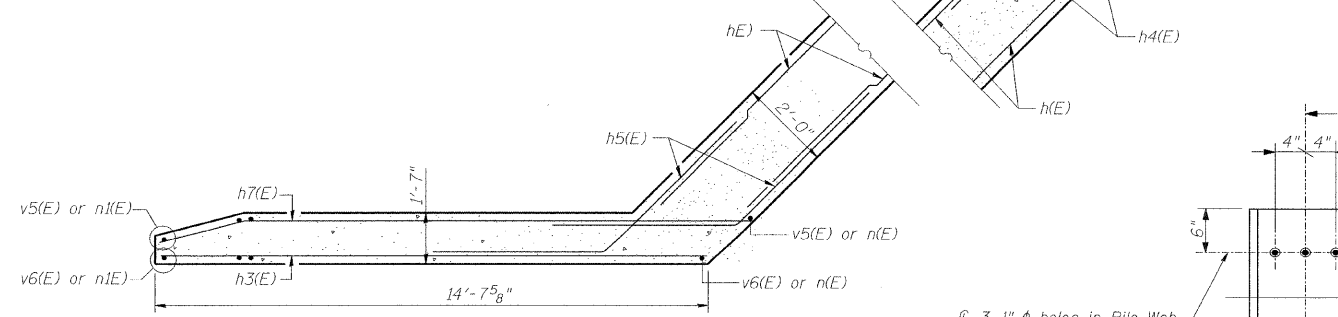
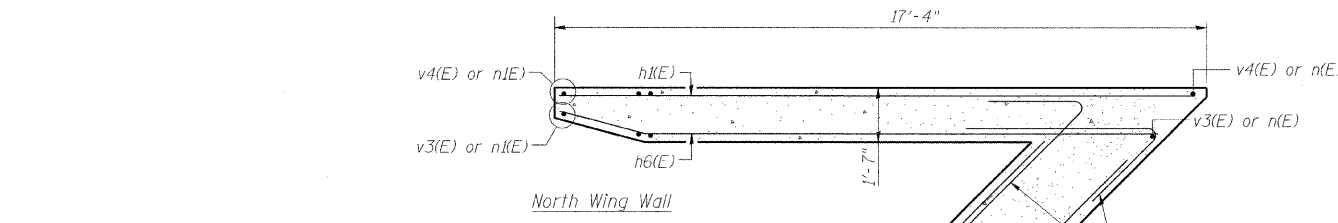
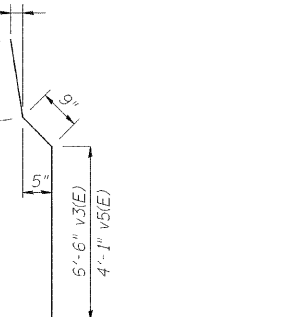
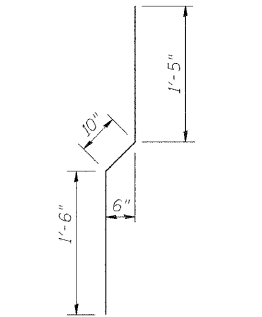
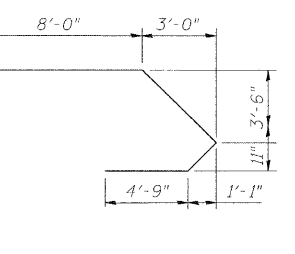
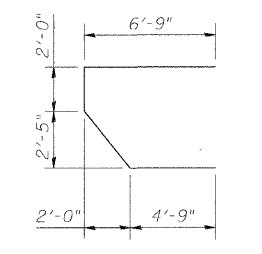
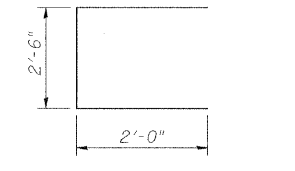
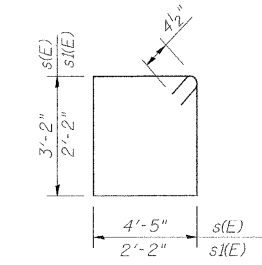
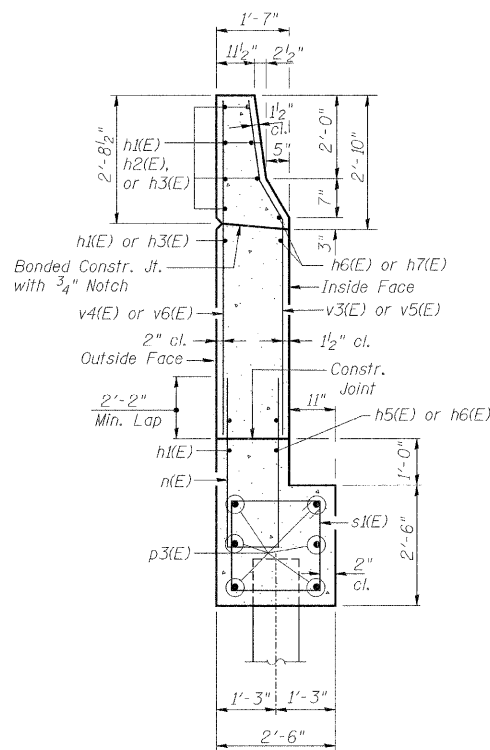
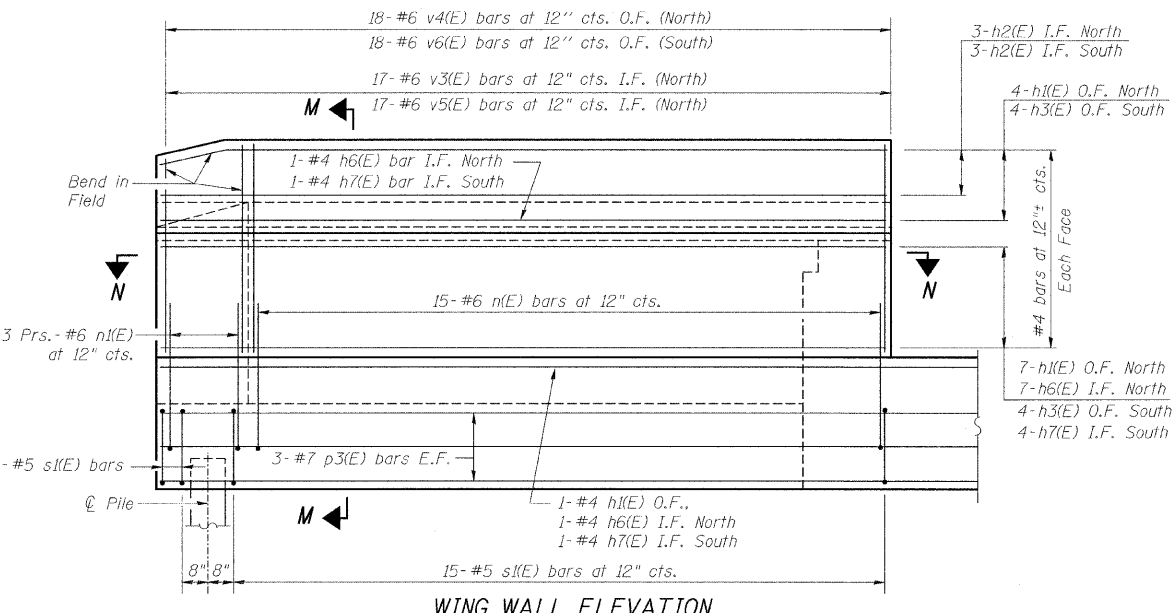
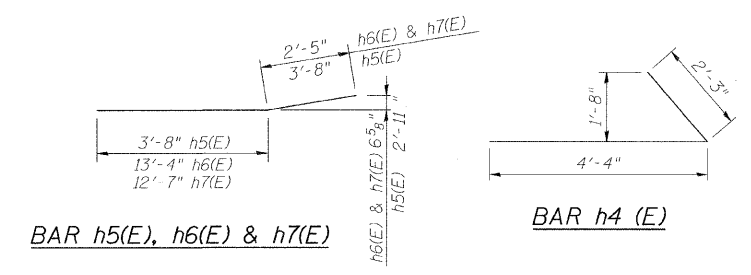
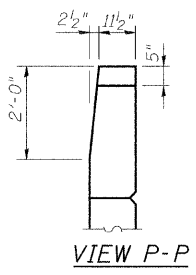
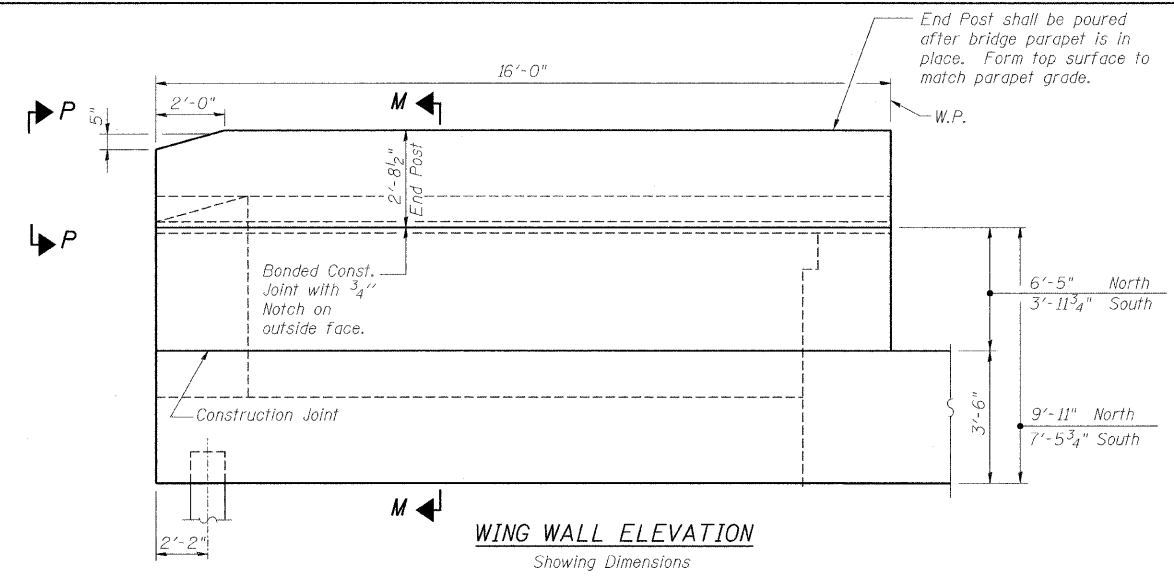
Contract # 78058

BILL OF MATERIAL

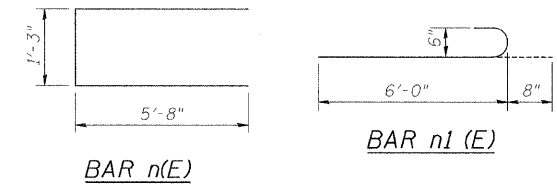
Bar	No.	Size	Length	Shape
h(E)	44	#5	32'-0"	—
h1(E)	13	#4	17'-0"	—
h2(E)	6	#4	15'-8"	—
h3(E)	8	#4	14'-4"	—
h4(E)	10	#5	7'-4"	—
h5(E)	16	#5	6'-7"	—
h6(E)	9	#4	15'-9"	—
h7(E)	6	#4	15'-0"	—
n(E)	30	#6	12'-7"	—
n1(E)	12	#6	6'-8"	—
p(E)	56	#7	34'-2"	—
p1(E)	21	#7	24'-0"	—
p2(E)	3	#7	18'-9"	—
p3(E)	12	#7	17'-0"	—
s(E)	124	#5	16'-0"	—
s1(E)	34	#5	9'-6"	—
u(E)	108	#5	6'-6"	—
u1(E)	4	#6	16'-8"	—
u2(E)	6	#6	18'-9"	—
v(E)	242	#4	5'-6"	—
v1(E)	121	#5	2'-6"	—
v2(E)	121	#4	3'-9"	—
v3(E)	17	#6	9'-1"	—
v4(E)	18	#6	9'-0"	—
v5(E)	17	#6	6'-8"	—
v6(E)	18	#6	6'-6"	—
w(E)	99	#6	3'-0"	—

Pay Item	Unit	Total
Porous Granular Emb., Special	Cu. Yd.	241
Structure Excavation	Cu. Yd.	128
Concrete Structures	Cu. Yd.	147
Reinf. Bars, Epoxy Coated	Pound	14,440
Furn. Steel Piles HP14x73	Foot	2,240
Driving Piles	Foot	2,240
Test Pile Steel HP14x73	Each	1
Concrete Sealer	Sq. Ft.	1421
Concrete Encasement	Cu. Yd.	18
Pipe Und. for Struct. 4"	Foot	144
Geocomposite Wall Drain	Sq. Yd.	120

S16 of S27



- NOTES:**
- Quantity of concrete in end post included with Concrete Superstructure on Sheet S9.
 - I.F. denotes inside face. O.F. denotes outside face. E.F. denotes each face.



DESIGNED	RJW
CHECKED	WJZ
DRAWN	LM
CHECKED	HMA

SECTION N-N

DETAIL 2

benesch
 alfred benesch & company
 Engineers • Surveyors • Planners
 205 North Michigan Avenue, Suite 2400
 Chicago, Illinois 60601
 312-565-0450
 JOB NO. 3526

ILLINOIS DEPARTMENT OF TRANSPORTATION
 RELOCATED ILLINOIS ROUTE 13 OVER
 HARRISBURG DITCH
 F.A.P. 331 SECTION (8X-1)B
 WEST ABUTMENT WINGWALLS
 AND DETAILS

SN: 083-0060
 SALINE CO., IL.
 STA. 1013+38.50
 DATE: FEB 4, 2009