

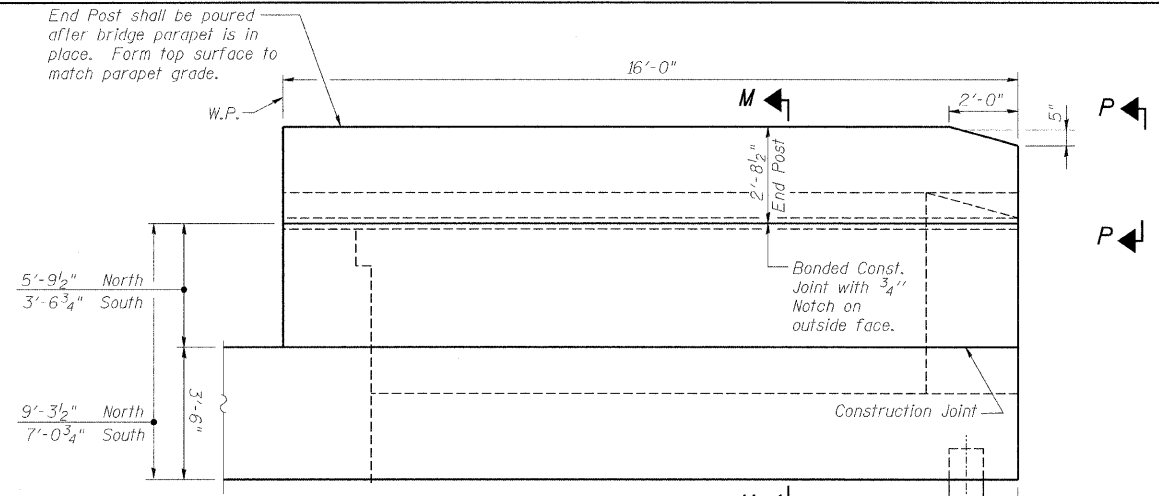
ROUTE NO.	SECTION	COUNTY	TOTAL SHEETS	SHEET NO.
F.A.P. 331	(8X-1)B	SALINE CO.	220	135
STA.		TO STA.		
F.H.W.A. REGION		ILLINOIS	PROJECT	

Contract # 78058

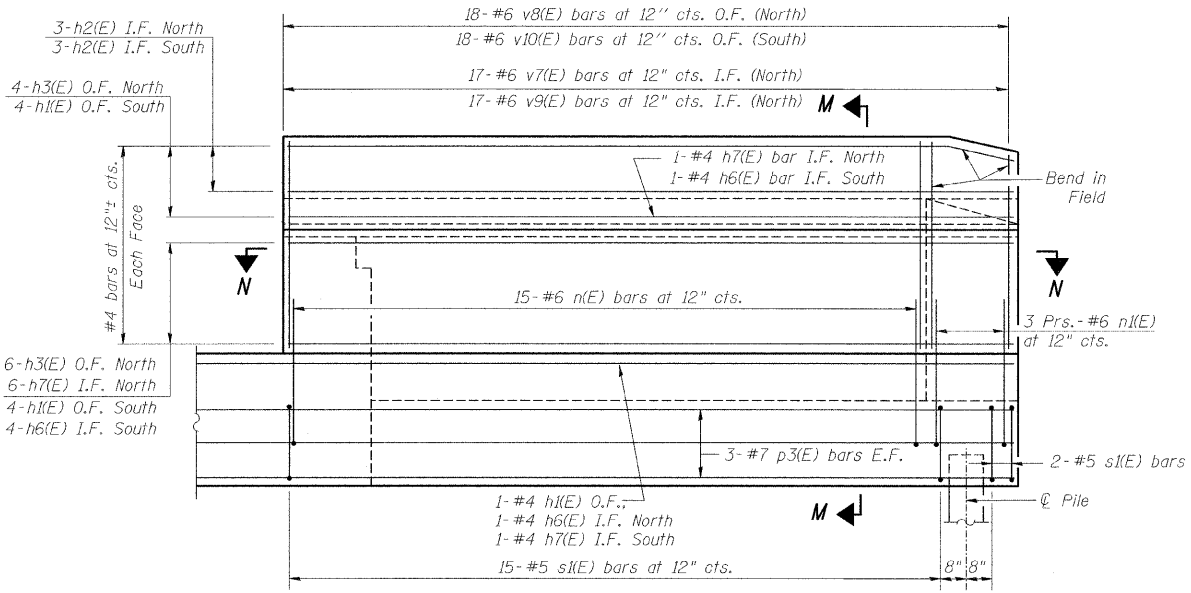
BILL OF MATERIAL

Bar	No.	Size	Length	Shape
h(E)	40	#5	32'-0"	—
h1(E)	10	#4	17'-0"	—
h2(E)	6	#4	15'-8"	—
h3(E)	10	#4	14'-4"	—
h4(E)	10	#5	7'-4"	—
h5(E)	16	#5	6'-7"	—
h6(E)	6	#4	15'-9"	—
h7(E)	8	#4	15'-0"	—
n(E)	30	#6	12'-7"	—
n1(E)	12	#6	6'-8"	—
p(E)	56	#7	34'-2"	—
p1(E)	21	#7	24'-0"	—
p2(E)	3	#7	18'-9"	—
p3(E)	12	#7	17'-0"	—
s(E)	124	#5	16'-0"	—
s1(E)	34	#5	9'-6"	—
u(E)	108	#5	6'-6"	—
u1(E)	6	#6	16'-8"	—
u2(E)	4	#6	18'-9"	—
v(E)	242	#4	5'-6"	—
v1(E)	121	#5	2'-6"	—
v2(E)	121	#4	3'-9"	—
v7(E)	17	#6	8'-5"	—
v8(E)	18	#6	8'-4"	—
v9(E)	17	#6	6'-2"	—
v10(E)	18	#6	6'-0"	—
w(E)	99	#6	3'-0"	—

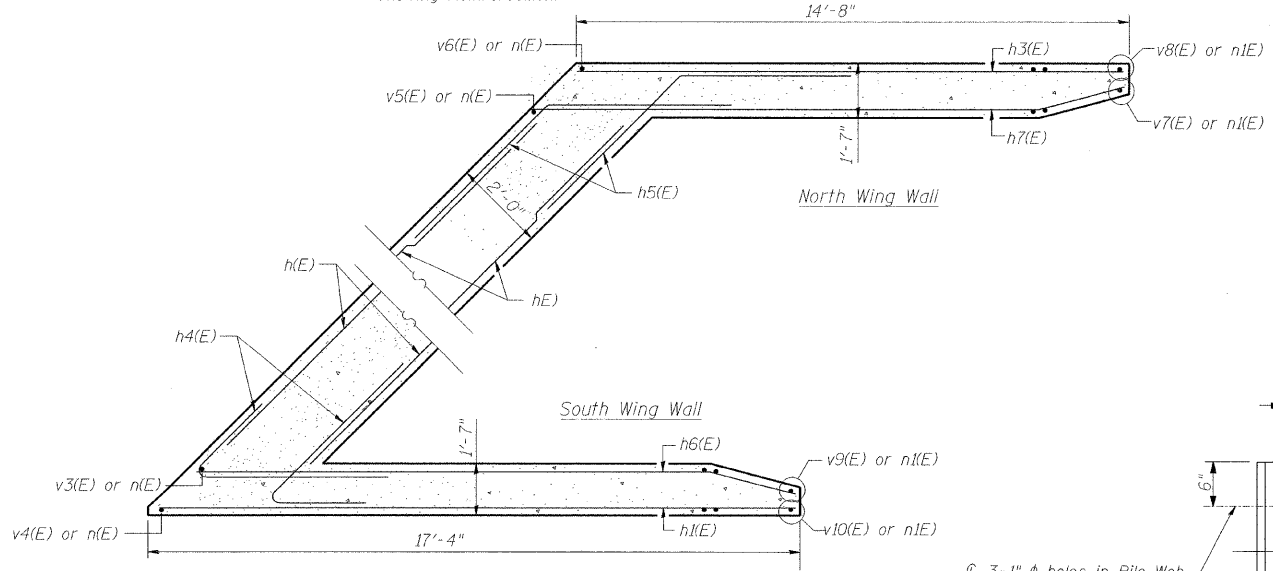
Pay Item	Unit	Total
Porous Granular Emb., Special	Cu. Yd.	217
Structure Excavation	Cu. Yd.	129
Concrete Structures	Cu. Yd.	148
Reinf. Bars, Epoxy Coated	Pound	14,220
Furn. Steel Piles HP14x73	Foot	2,240
Driving Piles	Foot	2,240
Test Pile Steel HP14x73	Each	1
Concrete Sealer	Sq. Ft.	1357
Concrete Encasement	Cu. Yd.	18
Pipe Und. for Struct. 4"	Foot	144
Geocomposite Wall Drain	Sq. Yd.	113



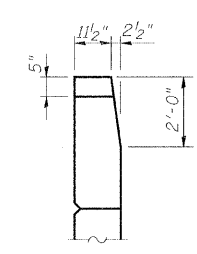
WING WALL ELEVATION
Showing Dimensions



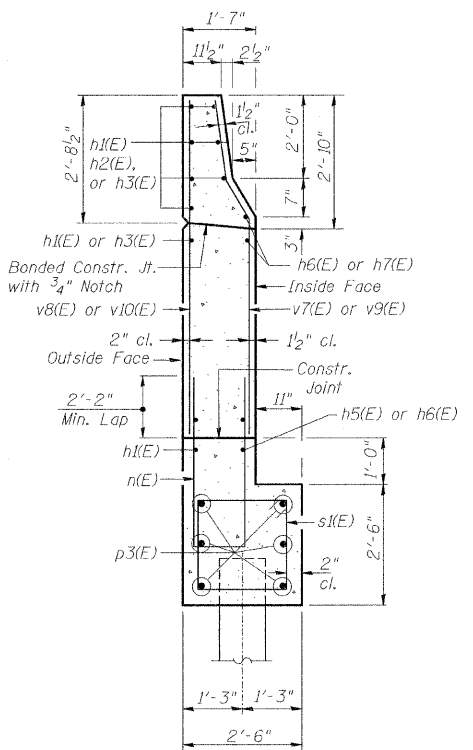
WING WALL ELEVATION
Showing Reinforcement



SECTION N-N



VIEW P-P

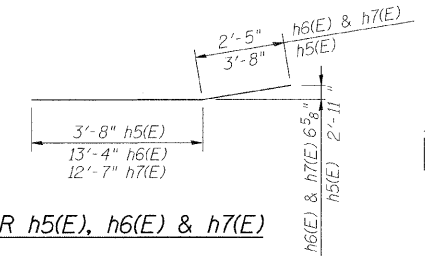


SEC. M-M

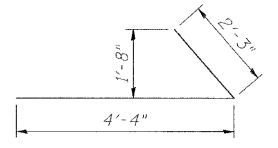


DETAIL 2

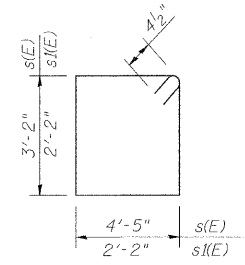
BAR h5(E), h6(E) & h7(E)



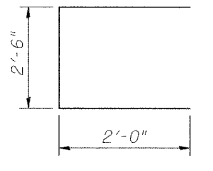
BAR h4 (E)



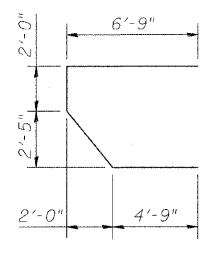
BARS s(E) & s1(E)



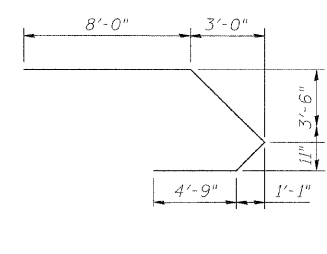
BAR u(E)



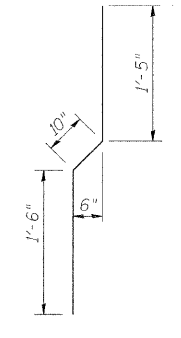
BAR u1(E)



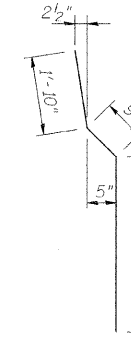
BAR u2(E)



BAR v2(E)

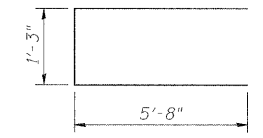


BAR v7(E) and v9(E)



NOTES:

- Quantity of concrete in end post included with Concrete Superstructure on Sheet S9.
- I.F. denotes inside face.
O.F. denotes outside face.
E.F. denotes each face.



BAR n(E)



BAR n1 (E)

DESIGNED	RJW
CHECKED	WJZ
DRAWN	LM
CHECKED	HMA

benesch

alfred benesch & company
Engineers • Surveyors • Planners
205 North Michigan Avenue, Suite 2400
Chicago, Illinois 60601
312-665-0450

ILLINOIS DEPARTMENT OF TRANSPORTATION
RELOCATED ILLINOIS ROUTE 13 OVER
HARRISBURG DITCH
F.A.P. 331 SECTION (8X-1)B
**EAST ABUTMENT WINGWALLS
AND DETAILS**

SN: 083-0060
SALINE CO., IL.

STA. 1013+38.50
DATE: FEB 4, 2009