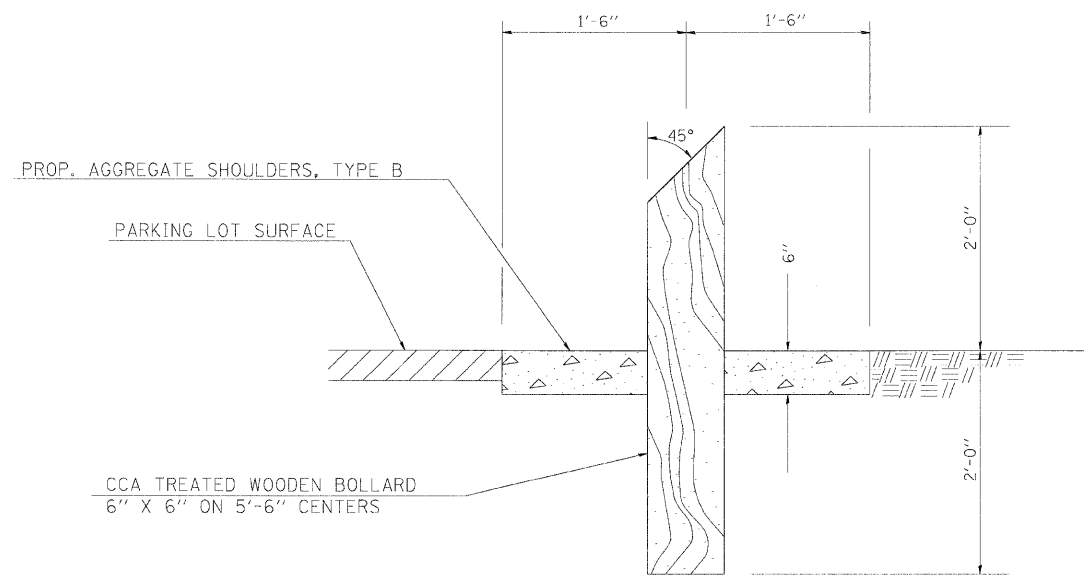


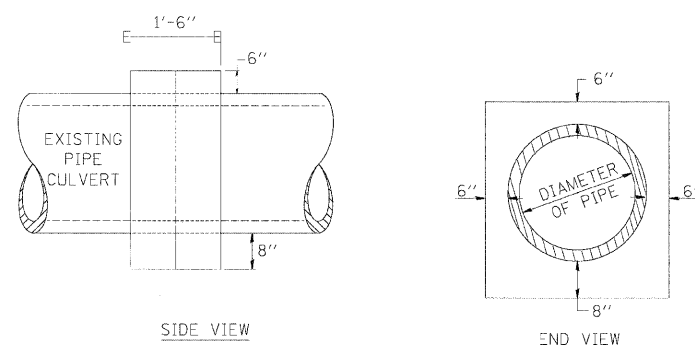
FAP RTE.	SECTION	COUNTY	TOTAL SHEETS	SHEET NO.
331	3-2, BX-1, 4-2	SALINE	220	155
STA.		TO STA.		
FED. ROAD DIST. NO.		ILLINOIS	FED. AID PROJECT	



NOTE: 3' AGG SHOULDERS, TYPE B SHALL BE CONSTRUCTED A UNIFORM 6" THICK AT BOLLARD LOCATIONS.

**WOOD BOLLARD DETAIL**

CHECKED BY: BAW PLOT DATE: 2/2/2009  
 DRAWN BY: DMS PLOT SCALE: 1/4"=1'-0"



TABULATION

DIAMETER OF PIPE	CL. SI CONC. CU. YDS. EST.
12"	0.24
15"	0.29
18"	0.32
24"	0.44
30"	0.56
36"	0.66
42"	0.80
48"	0.93
54"	1.07
60"	1.22
72"	1.55

THE CONCRETE COLLAR SHALL BE PAID FOR AT THE CONTRACT UNIT PRICE PER CUBIC YARD FOR **CONCRETE COLLAR**, AS SHOWN ON THE PLANS, WHICH PRICE SHALL INCLUDE THE REMOVAL OF SUCH PORTIONS THE EXISTING HEADWALLS AS MAY BE REQUIRED.

CLASS SI CONCRETE SHALL BE USED THROUGHOUT.

**DETAILS OF CONCRETE COLLAR**

PIPE TO PIPE

REVISIONS

REDRAWN	7-13-90
REVISED	8-22-94

STD. 9-79

M:\PROJ\3526\ROADWAY\CONTRACT 1\STANDARDS\Reference Files\std04\_3526c5.dgn