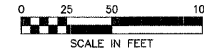


LOCAL RTE.	SECTION	COUNTY	TOTAL SHEETS	SHEET NO.
M.S. 1040	05-00010-00-PV	HENRY	136	14
STA. 36+50		TO STA. 52+50		
FED. ROAD DIST. NO. 2 ILLINOIS		FED. AID PROJECT		

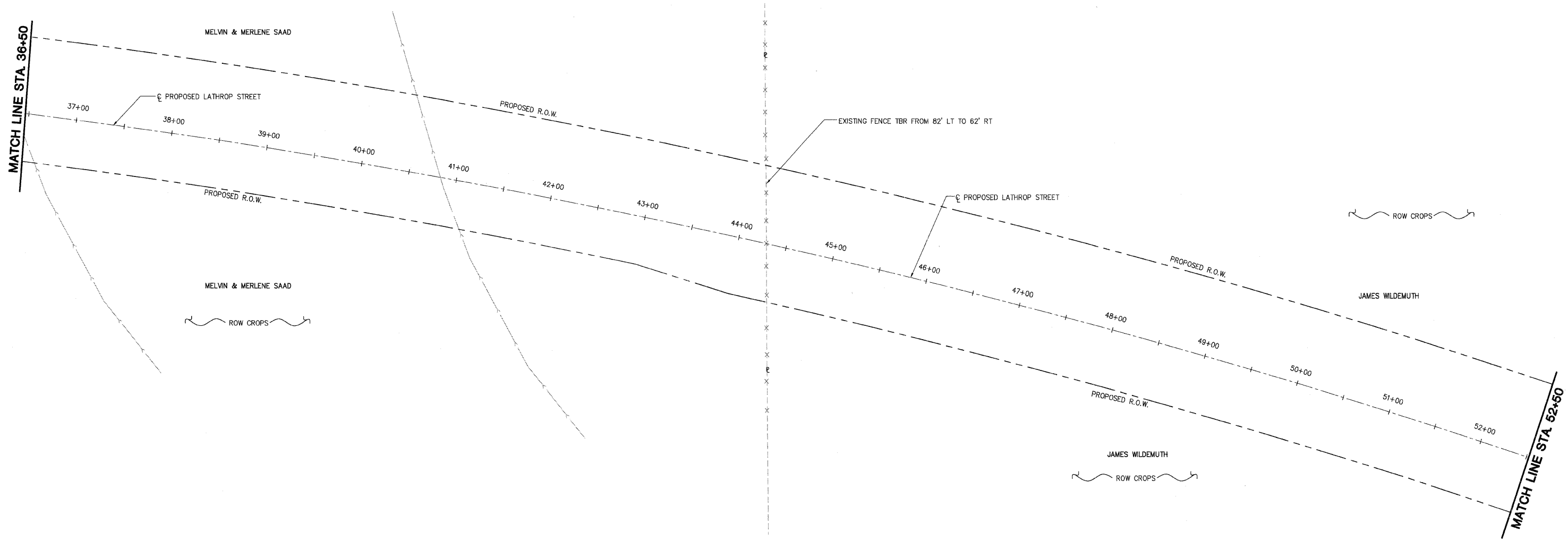
SHIVE HATTERY
 Cedar Rapids, IA · Iowa City, IA · Des Moines, IA
 Moline, IL · Bloomington, IL · Chicago, IL
 SHIVE-HATTERY, INC. 1701 RIVER DRIVE, SUITE 200 MOLINE, IL 61265
 PHONE (309) 764-7650 FAX (309) 764-8616
 http://www.shive-hattery.com
 ILLINOIS FIRM NUMBER: 184-000214



PLAN	DATE
BY	
NO.	
NO.	
NO.	
NO.	
NO.	
NO.	
NO.	
NO.	

PROFILE	DATE
BY	
NO.	
NO.	
NO.	
NO.	
NO.	
NO.	
NO.	
NO.	

PLOT DATE = #DATE#
 FILE NAME = #FILE#
 PLOT SCALE = #SCALE#
 USER NAME = #USER#



REVISIONS	
NAME	DATE

ILLINOIS DEPARTMENT OF TRANSPORTATION
 DEMOLITION SHEET
 3 OF 6
 SCALE: VERT. _____
 HORIZ. _____
 DATE: 03-11-09
 DRAWN BY: MAC
 CHECKED BY: PMH