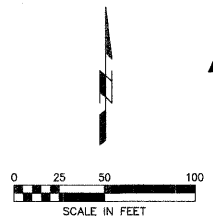


LOCAL RTE.	SECTION	COUNTY	TOTAL SHEETS	SHEET NO.
1040	05-00010-00-PV	HENRY	136	17
STA. 79+50		TO STA. 85+98.55		
FED. ROAD DIST. NO. 2 ILLINOIS FED. AID PROJECT				

SHIVE HATTERY

Cedar Rapids, IA · Iowa City, IA · Des Moines, IA
Moline, IL · Bloomington, IL · Chicago, IL

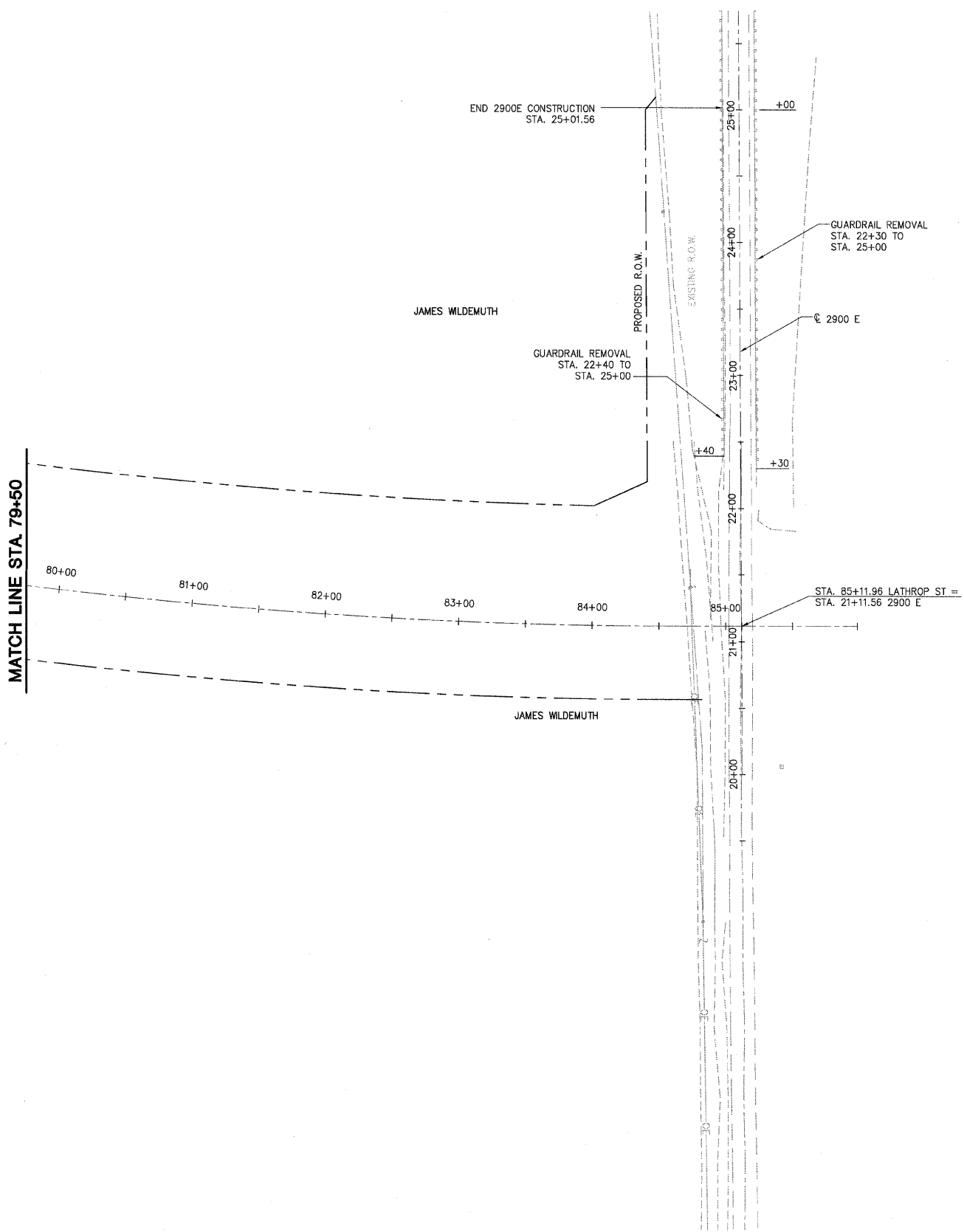
SHIVE-HATTERY, INC. 1701 RIVER DRIVE, SUITE 200 Moline, IL 61265
PHONE (309) 764-7650 FAX (309) 764-8616
http://www.shive-hattery.com
ILLINOIS FIRM NUMBER: 184-000214



PLAN	SURVEYED	DATE
NOTE BOOK	PLOTTED	BY
No.	NO. OF SHEETS	
	REVISIONS	
	DATE	
	BY	
	FILE NAME	
	SCALE	
	USER	

PROFILE	SURVEYED	DATE
NOTE BOOK	PLOTTED	BY
No.	NO. OF SHEETS	
	REVISIONS	
	DATE	
	BY	
	FILE NAME	
	SCALE	
	USER	

PLOT DATE = #DATE#
FILE NAME = #FILE#
PLOT SCALE = #SCALE#
USER NAME = #USER#



REVISIONS	
NAME	DATE

ILLINOIS DEPARTMENT OF TRANSPORTATION

DEMOLITION SHEET
6 OF 6

SCALE: VERT. _____
HORIZ. _____
DATE: 03-11-09

DRAWN BY: MAC
CHECKED BY: PMH