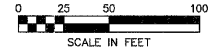


LOCAL RTE.	SECTION	COUNTY	TOTAL SHEETS	SHEET NO.
M.S. 1040	05-00010-00-PV	HENRY	136	18
STA. 5+00		TO STA. 20+50		
FED. ROAD DIST. NO. 2 ILLINOIS FED. AID PROJECT				



SHIVE-HATTERY, INC. 1701 RIVER DRIVE, SUITE 200 MOLINE, IL 61265
 PHONE (309) 764-7650 FAX (309) 764-8616
 http://www.shive-hattery.com
 ILLINOIS FIRM NUMBER: 184-000214



BENCHMARKS:

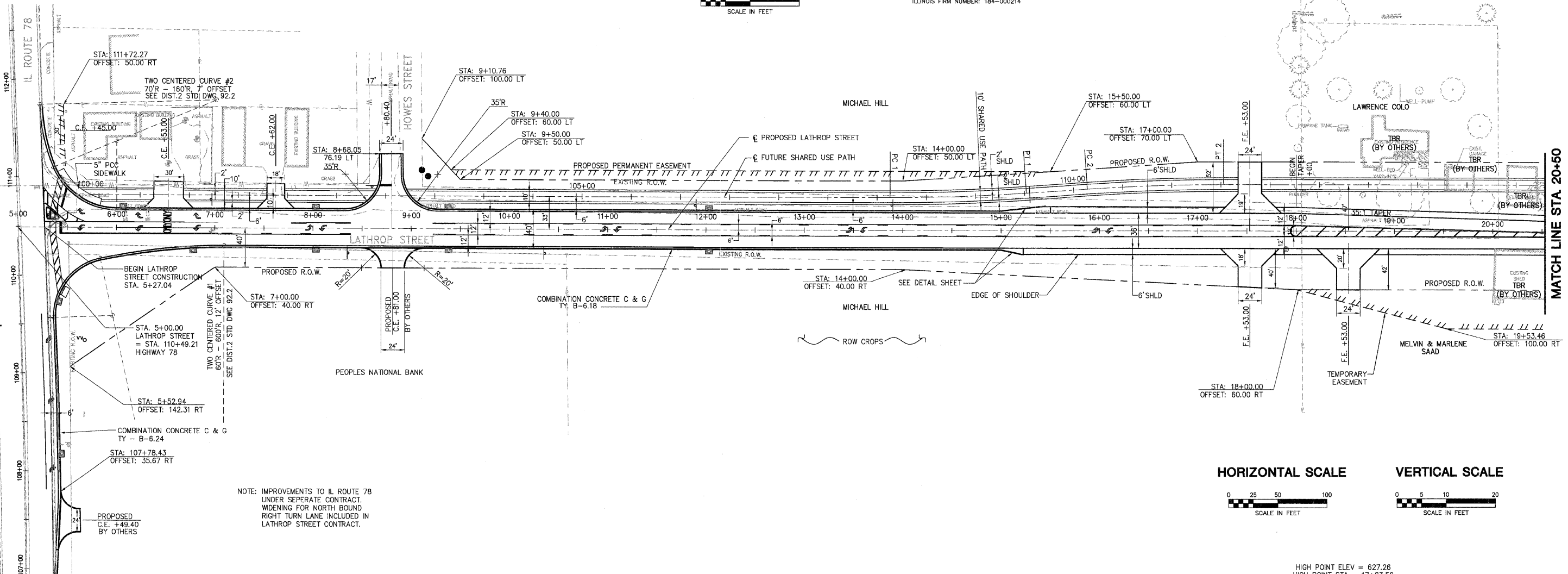
- NGS MONUMENT MF1033 1.8 MILES EAST OF ANNAPAN. ELEV. 654.90
- 5/8" Ø REBAR AT EAST EDGE OF SIDEWALK ON WEST SIDE OF IL 78 AT EXTENSION OF LATHROP RD. C STA. 110+82.55, 39.3' LT. ELEV. = 624.59

SHARED USE PATH CURVE 1
 PI STA. = 108+82.48
 $\Delta = 03^{\circ}58'19''$ LT
 $R = 2000'$
 $T = 69.35'$
 $L = 138.65'$
 $E = 1.20'$
 P.C. STA. = 108+13.13
 P.T. STA. = 109+51.78

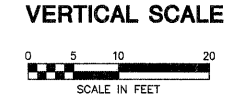
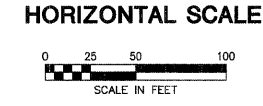
SHARED USE PATH CURVE 2
 PI STA. = 110+83.38
 $\Delta = 03^{\circ}58'19''$ RT
 $R = 2000'$
 $T = 69.35'$
 $L = 138.65'$
 $E = 1.20'$
 P.C. STA. = 110+14.03
 P.T. STA. = 111+52.68

DATE	
BY	
PLAN	
REVISIONS	
NO.	
DATE	
BY	
DESCRIPTION	

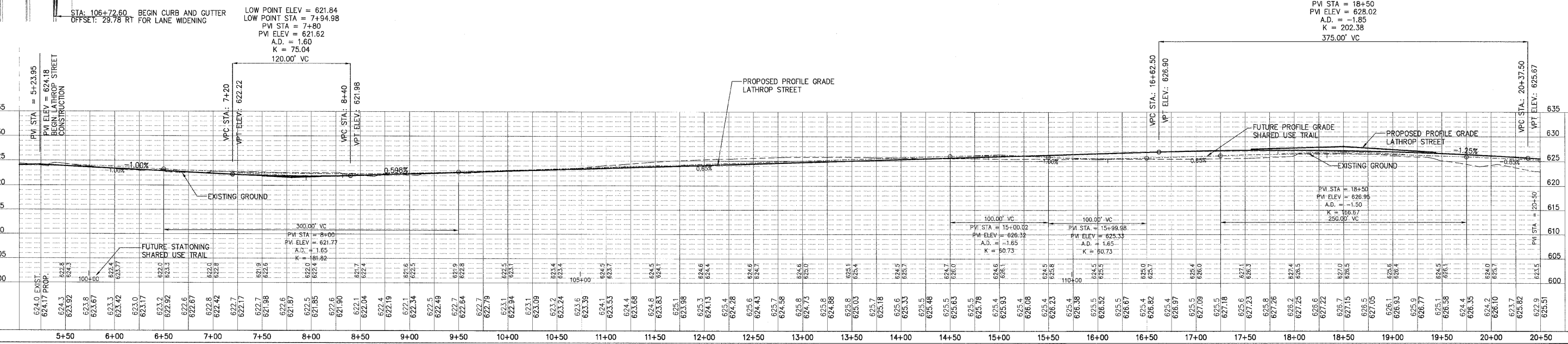
DATE	
BY	
PROFILE	
REVISIONS	
NO.	
DATE	
BY	
DESCRIPTION	



NOTE: IMPROVEMENTS TO IL ROUTE 78 UNDER SEPARATE CONTRACT. WIDENING FOR NORTH BOUND RIGHT TURN LANE INCLUDED IN LATHROP STREET CONTRACT.



HIGH POINT ELEV = 627.26
 HIGH POINT STA = 17+83.52
 PVI STA = 18+50
 PVI ELEV = 628.02
 A.D. = -1.85
 K = 202.38
 375.00' VC



PLOT DATE = #DATE#
 FILE NAME = #FILE#
 PLOT SCALE = #SCALE#
 USER NAME = #USER#