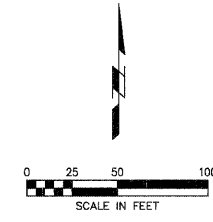


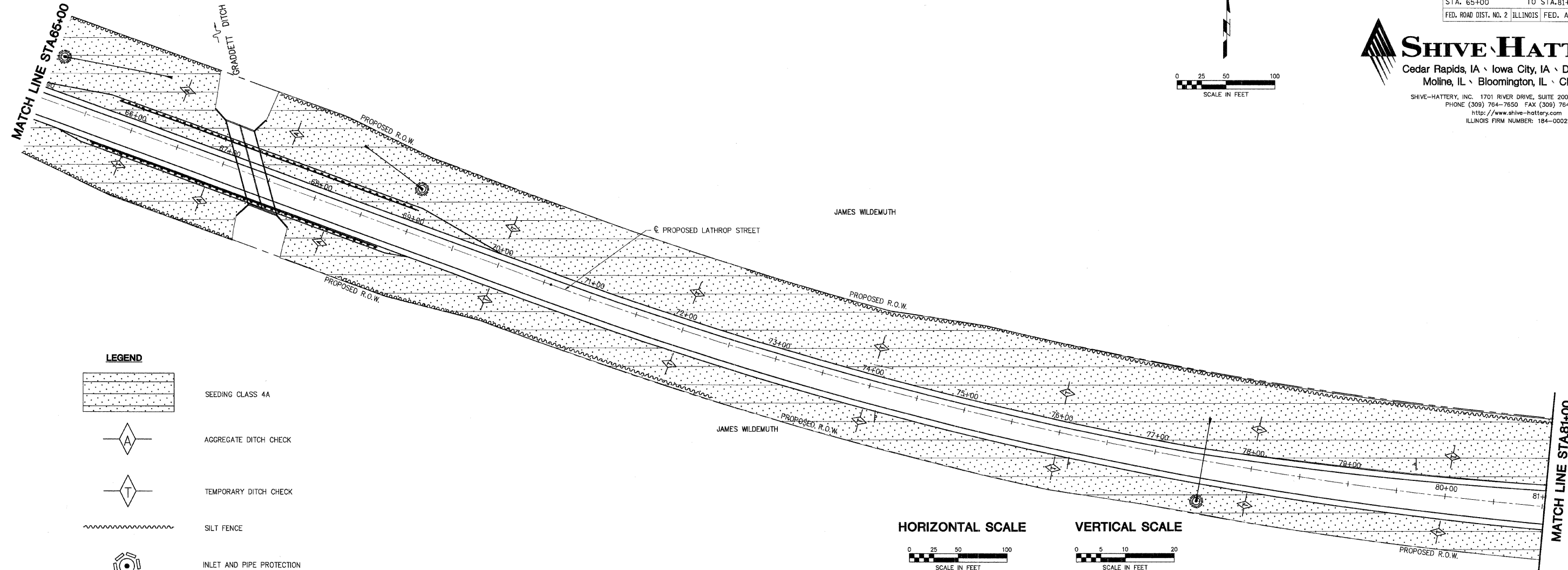
LOCAL ATE.	SECTION	COUNTY	TOTAL SHEETS	SHEET NO.
MS-1040	05-00010-00-PV	HENRY	136	37
STA. 65+00		TO STA. 81+00		
FED. ROAD DIST. NO. 2		ILLINOIS FED. AID PROJECT		

SHIVE HATTERY
 Cedar Rapids, IA · Iowa City, IA · Des Moines, IA
 Moline, IL · Bloomington, IL · Chicago, IL
 SHIVE-HATTERY, INC. 1701 RIVER DRIVE, SUITE 200 MOLINE, IL 61265
 PHONE (309) 764-7650 FAX (309) 764-8616
 http://www.shive-hattery.com
 ILLINOIS FIRM NUMBER: 184-000214

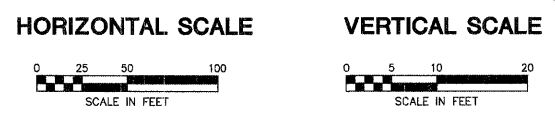


PLAN	DATE
NO.	
BY	
DATE	
REVISION	
NO.	
BY	
DATE	

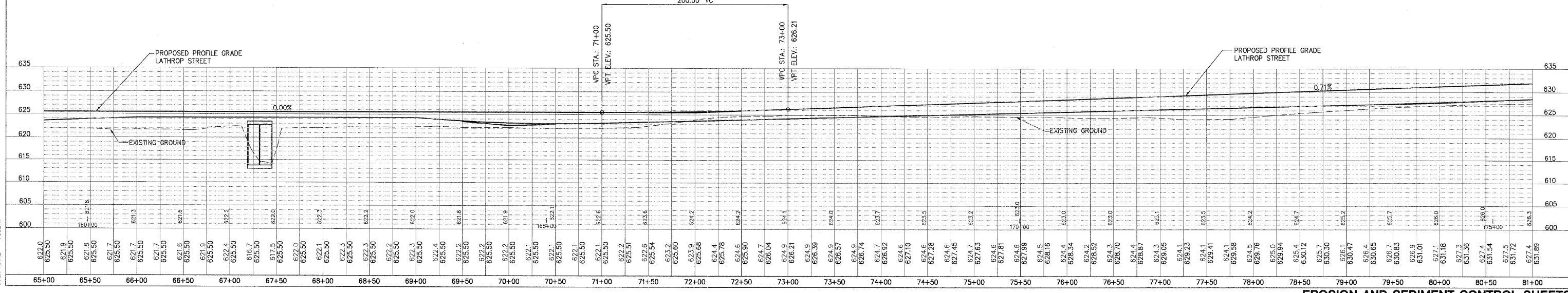
PROFILE	DATE
NO.	
BY	
DATE	
REVISION	
NO.	
BY	
DATE	



- LEGEND**
- SEEDING CLASS 4A
 - AGGREGATE DITCH CHECK
 - TEMPORARY DITCH CHECK
 - SILT FENCE
 - INLET AND PIPE PROTECTION



LOW POINT ELEV = 625.50
 LOW POINT STA = 71+00
 PVI STA = 72+00
 PVI ELEV = 625.50
 A.D. = 0.71
 K = 281.53
 200.00' VC



PLOT DATE = #DATE#
 FILE NAME = #FILE#
 PLOT SCALE = #SCALE#
 USER NAME = #USER#