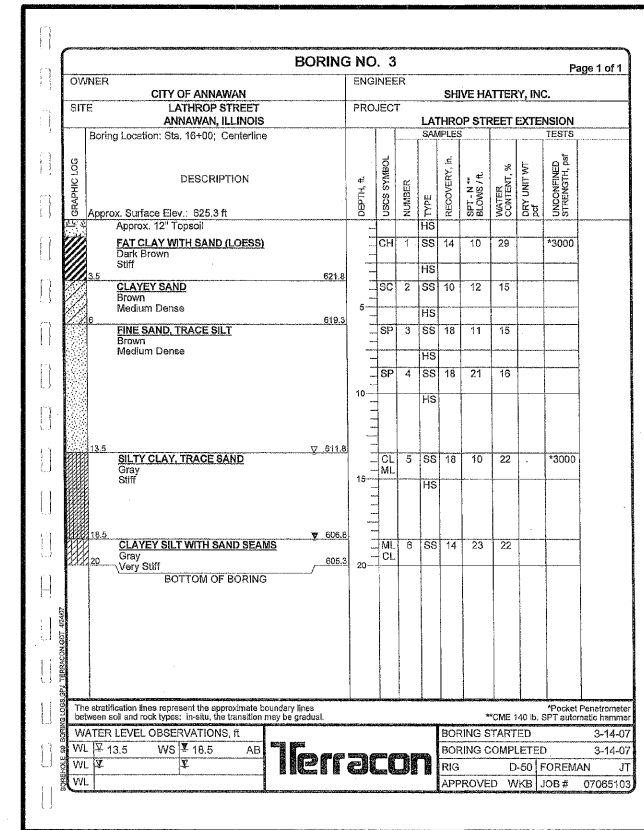
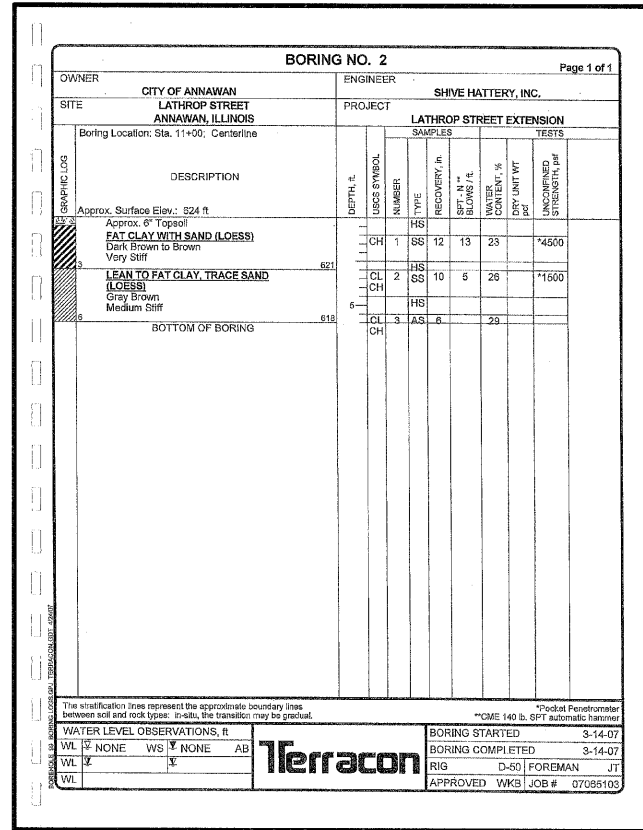
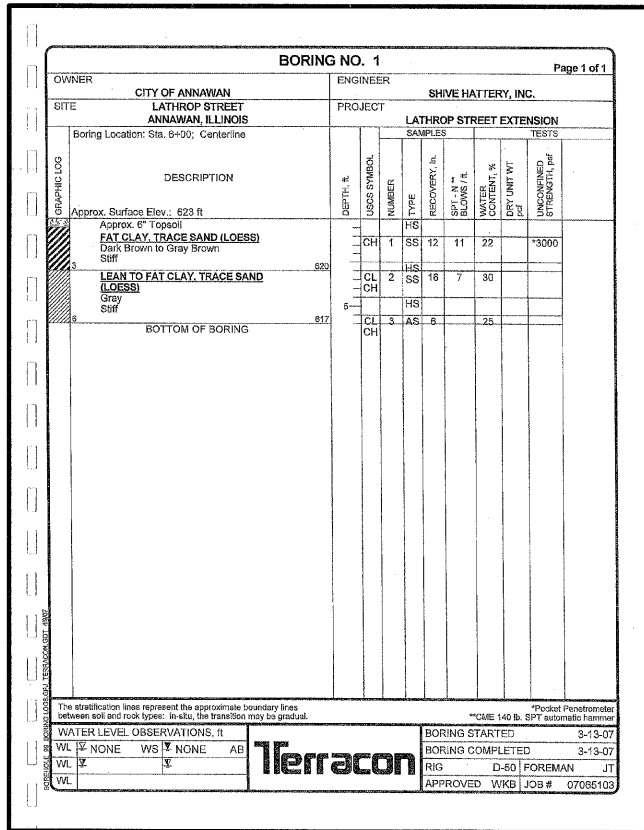
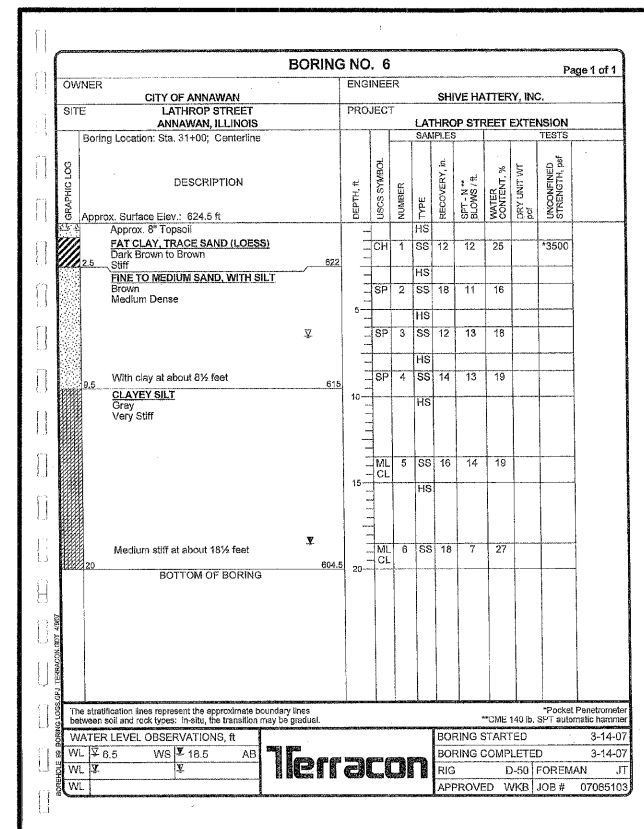
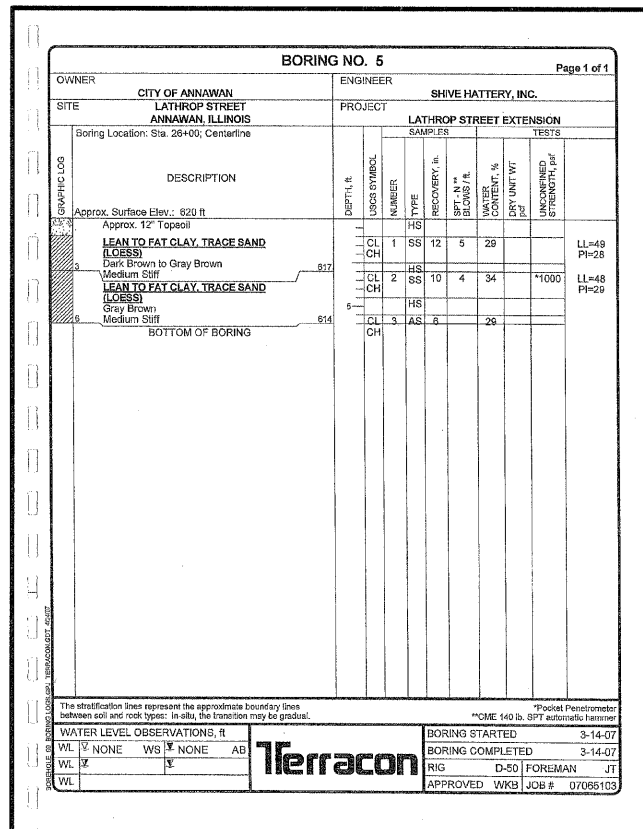
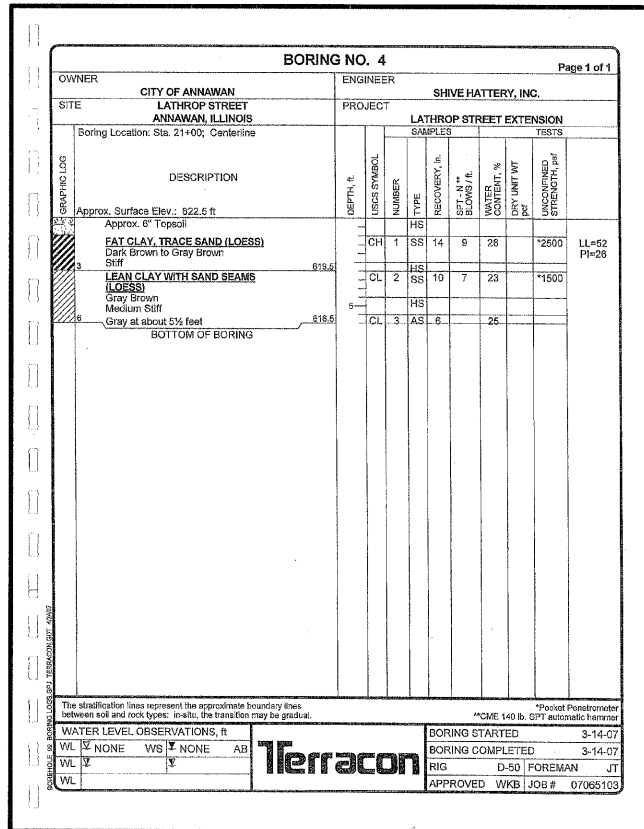


LOCAL RTE.	SECTION	COUNTY	TOTAL SHEETS	SHEET NO.
M.S. 1040	05-00010-00-PV	HENRY	136	63
STA. 6+00		TO STA. 31+00		
FED. ROAD DIST. NO. -		ILLINOIS	FED. AID PROJECT	



SHIVE HATTERY
Cedar Rapids, IA • Iowa City, IA • Des Moines, IA
Moline, IL • Bloomington, IL • Chicago, IL

SHIVE-HATTERY, INC. 1701 RIVER DRIVE, SUITE 200 MOLINE, IL 61265
PHONE (309) 764-7650 FAX (309) 764-8616
http://www.shive-hattery.com
ILLINOIS FIRM NUMBER: 184-000214



REVISIONS		ILLINOIS DEPARTMENT OF TRANSPORTATION
NAME	DATE	
		SOIL BORING SHEET 1 OF 4

SCALE: VERT. _____
HORIZ. _____
DATE: 03-11-09

DRAWN BY: MAC
CHECKED BY: PMH

PLT DATE = #DATE#
FILE NAME = #FILE#
SCALE = #SCALE#
USER NAME = #USER#