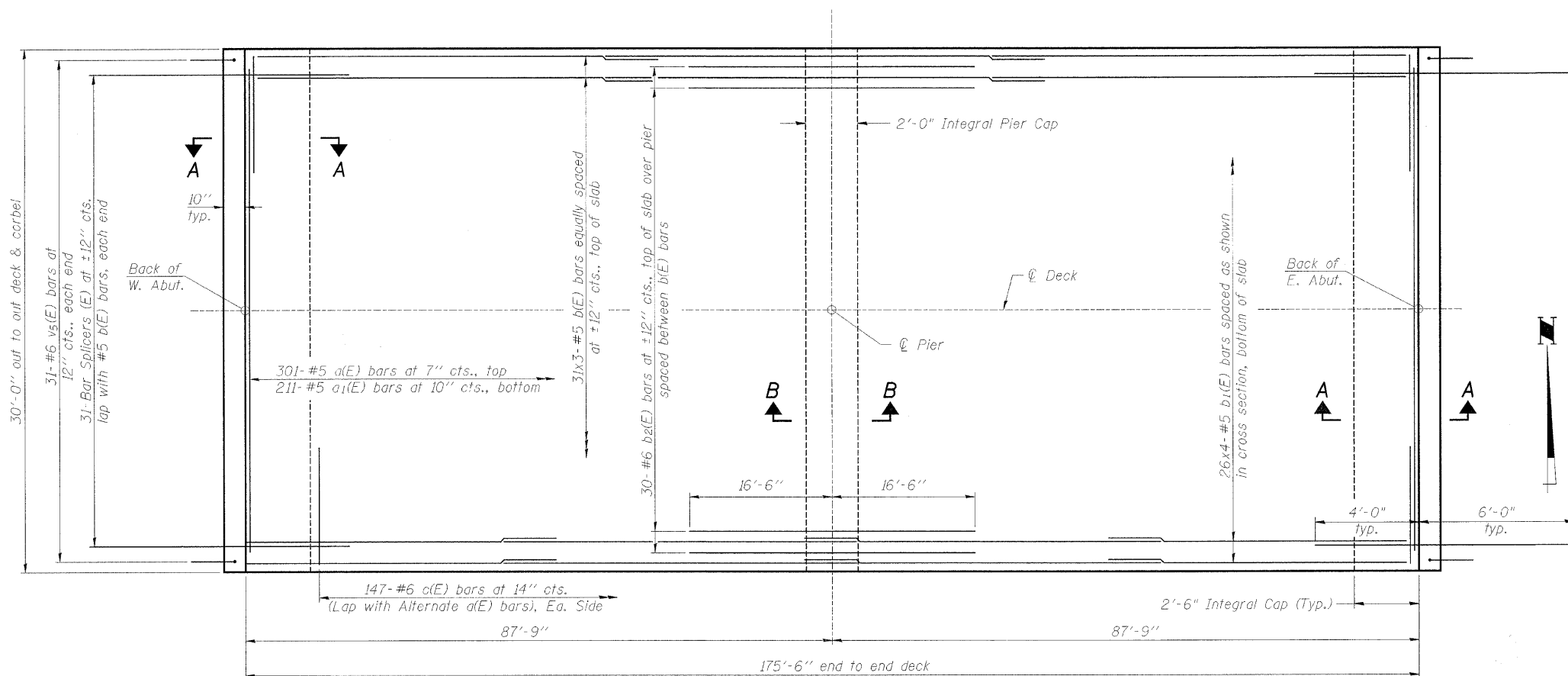


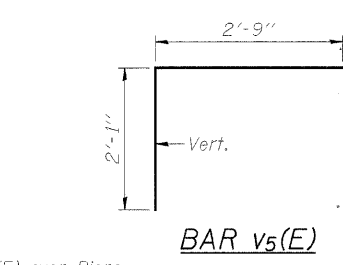
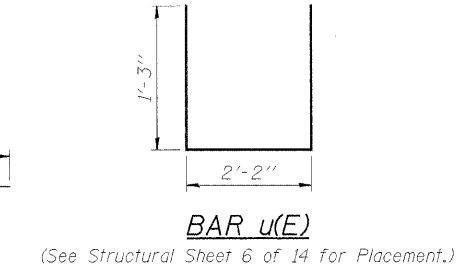
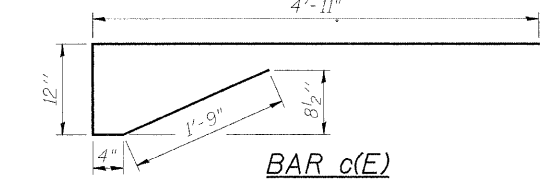
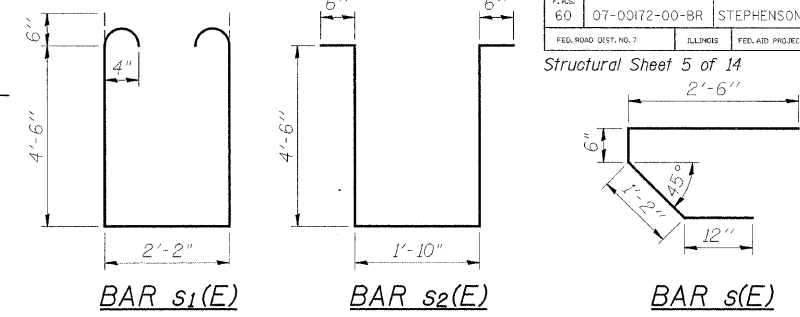
SCALE	SECTION	COUNTY	SHEETS	SHEET
60	07-00172-00-BR	STEPHENSON	31	14
FED. ROAD DIST. NO. 7	BILLINGS	FED. AID PROJECT	BRS-60(12)	

Structural Sheet 5 of 14



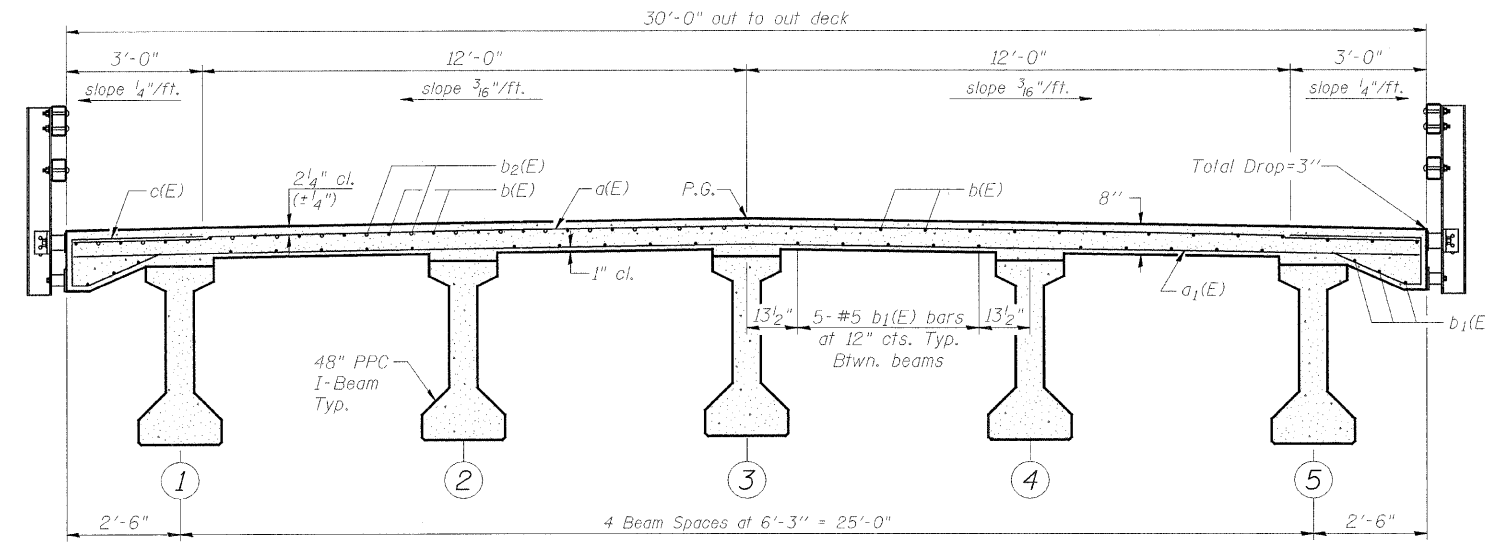
PLAN VIEW

BAR	LAP
#4	1'-8"
#5	2'-2"
#6	2'-7"
#7	3'-5"
#8	4'-6"

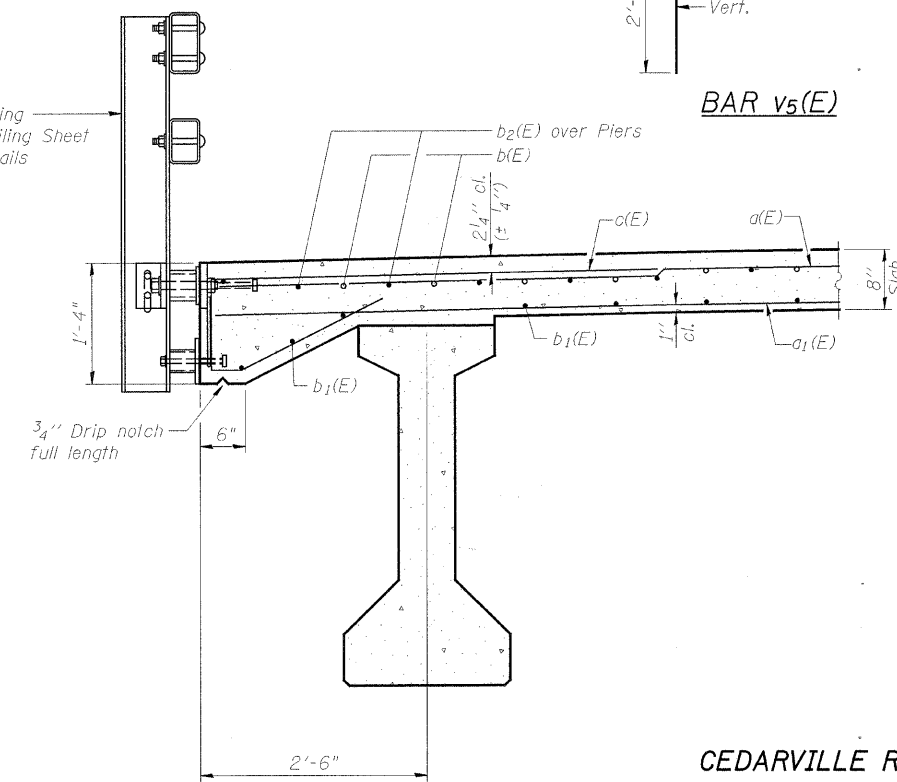


SUPERSTRUCTURE BILL OF MATERIAL

Bar	No.	Size	Length	Shape
a(E)	301	#5	29'-8"	—
a ₁ (E)	211	#5	29'-8"	—
b(E)	93	#5	59'-10"	—
b ₁ (E)	104	#5	45'-5"	—
b ₂ (E)	30	#6	33'-0"	—
c(E)	294	#6	8'-0"	⤴
m(E)	4	#4	29'-8"	—
m ₁ (E)	8	#6	29'-8"	—
m ₂ (E)	20	#6	7'-7"	—
m ₃ (E)	16	#5	4'-1"	—
m ₄ (E)	4	#6	1'-3"	—
m ₅ (E)	24	#6	5'-3"	—
m ₆ (E)	5	#8	5'-10"	—
s(E)	60	#5	5'-2"	⤴
s ₁ (E)	52	#4	12'-2"	⤴
s ₂ (E)	20	#4	11'-10"	⤴
u(E)	20	#6	4'-8"	⤴
v ₅ (E)	62	#6	4'-10"	⤴
Reinforcement Bars, Epoxy Coated		Lbs.		34,100
Concrete Superstructure		Cu. Yds.		179.4
Protective Coat		Sq. Yds.		585
Bar Splicers		Each		62
Bridge Deck Grooving		Sq. Yds.		546



CROSS SECTION (Looking East)



SECTION THRU END OF DECK

*For Insert locations See Structural Sheet 12 of 14.

NOTES:

Reinforcement bars designated (E) shall be epoxy coated.

All exposed edges shall have standard 3/4" chamfers. Except as noted.

Bars indicated thus 31 x 3-#5 etc. indicates 31 lines of bars with 3 lengths per line.

See Structural Sheet 13 of 14 for bar splicer details.

Reinforcement bars in the top of the deck may be placed with a 1 1/2" minimum clearance in the area of the rail post anchor devices. The studs of the anchor devices shall be placed below the top reinforcement bars and the outermost longitudinal reinforcement bar shall be placed directly above the studs of the rail post anchor device.

See Structural Sheet 6 of 14 for Sections A-A & B-B.

SUPERSTRUCTURE
CEDARVILLE ROAD (FAS 60) OVER RICHLAND CREEK
STA. 383+72 (S.N. 089-3282)
SECTION 07-00172-00-BR
STEPHENSON COUNTY
 WHA #1106D07