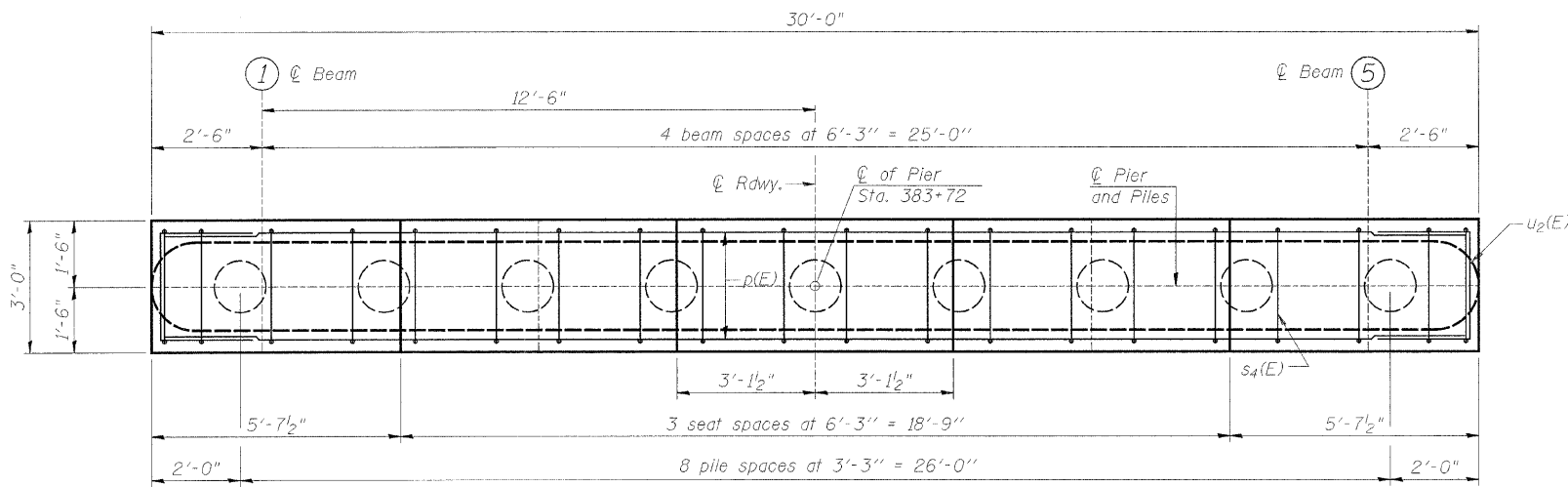
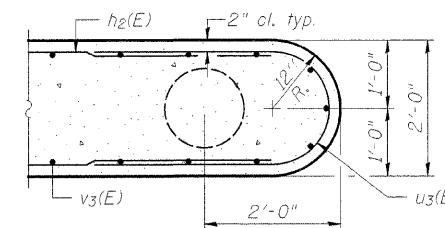


ROUTE F.A.S. 60	SECTION 07-00172-00-BR	COUNTY STEPHENSON	SHEET 31	SHEET 17
FED. ROAD DIST. NO. 7		BRIDGE	FED. AID PROJECT - DRS-601121	

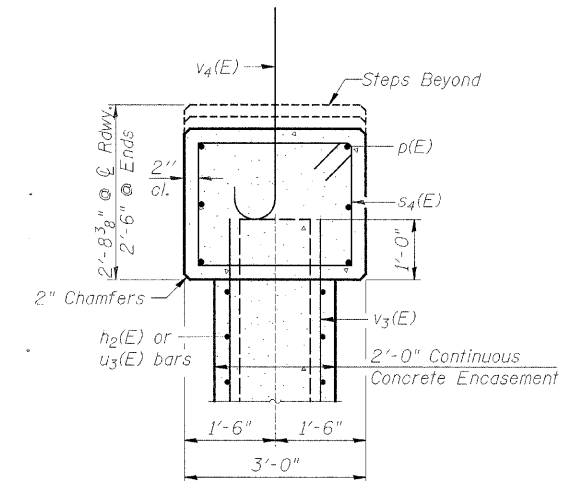
Structural Sheet 8 of 14



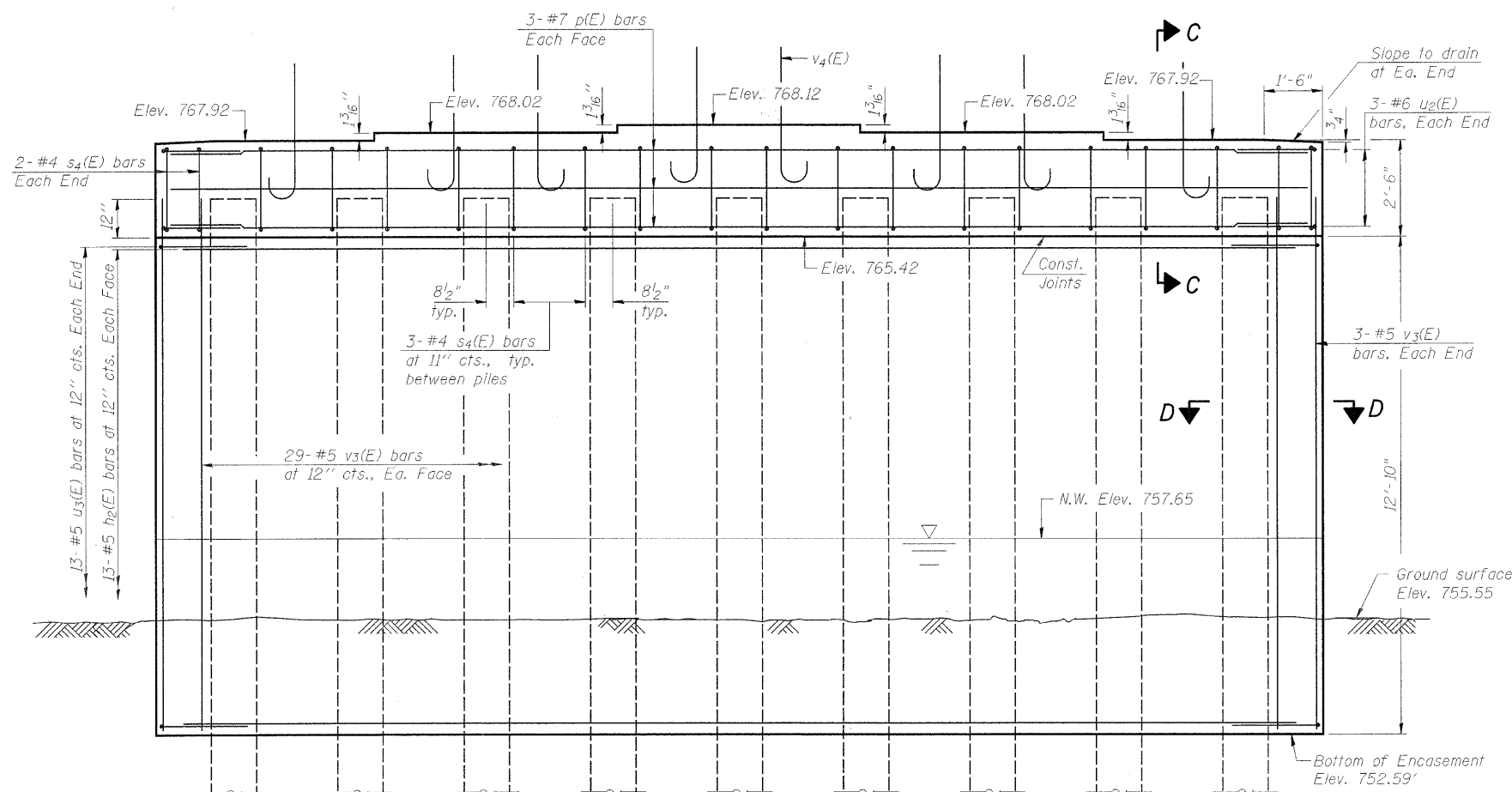
**PLAN**  
(Looking Upstation)



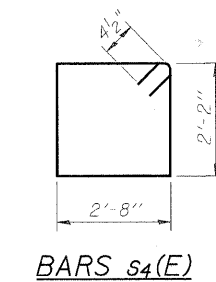
**SECTION D-D**



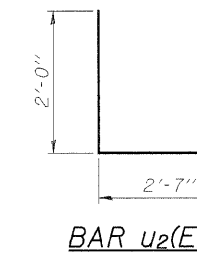
**SECTION C-C**



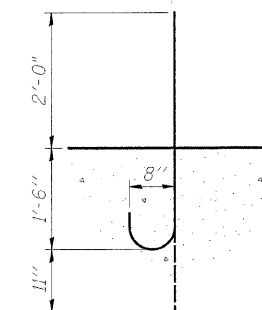
**PIER ELEVATION**



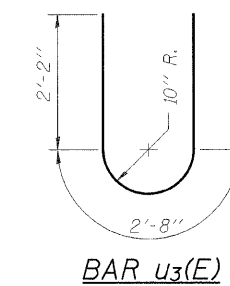
**BARS s4(E)**



**BAR u2(E)**



**BARS v4(E)**



**BAR u3(E)**

**BILL OF MATERIAL**

Bar	No.	Size	Length	Shape
h2(E)	26	#5	28'-0"	—
p(E)	6	#7	28'-8"	—
s4(E)	28	#4	10'-5"	□
u2(E)	6	#6	6'-7"	U
u3(E)	26	#5	7'-0"	U
v3(E)	64	#5	13'-8"	—
v4(E)	8	#8	4'-5"	—
Concrete Structures	Cu. Yd.		31.8	
Reinforcement Bars, Epoxy Coated	Pound		2,570	
Underwater Structure Excavation Protection	L. Sum		1	
Furnishing Metal Shell Piles 14" x 0.250"	Foot		224	
Driving Piles	Foot		224	
Test Pile Metal Shells 14"	Each		1	

**NOTES:**

- Pour steps monolithically with cap.
- Reinforcement bars designated (E) shall be epoxy coated.
- All exposed edges shall have standard 3/4" chamfers. Except as noted.
- v4(E) bars shall be placed at beam locations shown on diaphragm detail Structural Sheet 6 of 14.

**PIER PILE DATA**

Type: ..... Metal Shell-14" x 0.250"  
 Nominal Required Bearing:..... 416k  
 Factored Resistance Available:.... 197k  
 Est. Length: ..... 28'  
 No. Production Piles: ..... 8  
 No. Test Piles: ..... 1

**PIER DETAILS**  
**CEDARVILLE ROAD (FAS 60) OVER RICHLAND CREEK**  
**STA. 383+72 (S.N. 089-3282)**  
**SECTION 07-00172-00-BR**  
**STEPHENSON COUNTY**  
 WHA #1106D07