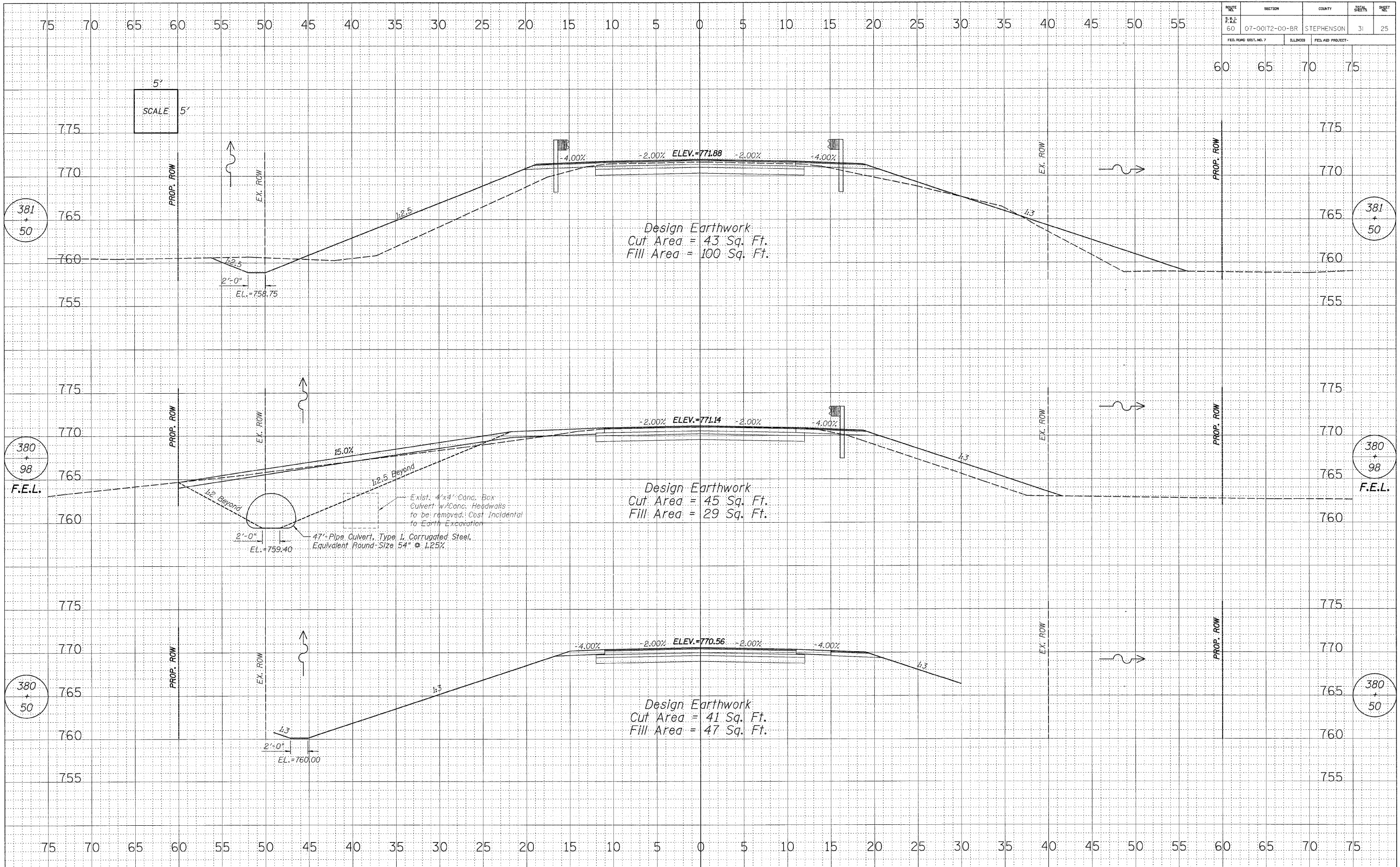


ROUTE	SECTION	COUNTY	SHEET	SHEET
S.R.L. F.A.S. 60	07-00172-00-BR	STEPHENSON	31	25
FED. ROAD DIST. NO. 7		ILLINOIS	FED. AID PROJECT-	



Design Earthwork:
Cut Area = 43 Sq. Ft.
Fill Area = 100 Sq. Ft.

Design Earthwork:
Cut Area = 45 Sq. Ft.
Fill Area = 29 Sq. Ft.

Design Earthwork:
Cut Area = 41 Sq. Ft.
Fill Area = 47 Sq. Ft.

Exist. 4"x4" Conc. Box
Culvert w/Conc. Headwalls
to be removed. Cost Incidental
to Earth Excavation

47" Pipe Culvert, Type I, Corrugated Steel,
Equivalent Round-Size 54" @ 1.25%

DATE	BY
SURVEYED	PLOTTED
NOTE BOOK	AREAS CHECKED
NO.	

DATE	BY
SURVEYED	PLOTTED
NOTE BOOK	AREAS CHECKED
NO.	

PLOT DATE = #DATE#
PLOT SCALE = #SCALE#
PLOT USER = #USER#