

F.A.U. RTE.	SECTION	COUNTY	TOTAL SHEETS	SHEET NO.
5156	08-00550-00-BR	Winnebago	15	1
FED. ROAD DIST. NO. 2	ILLINOIS	CONTRACT NO.	85444	

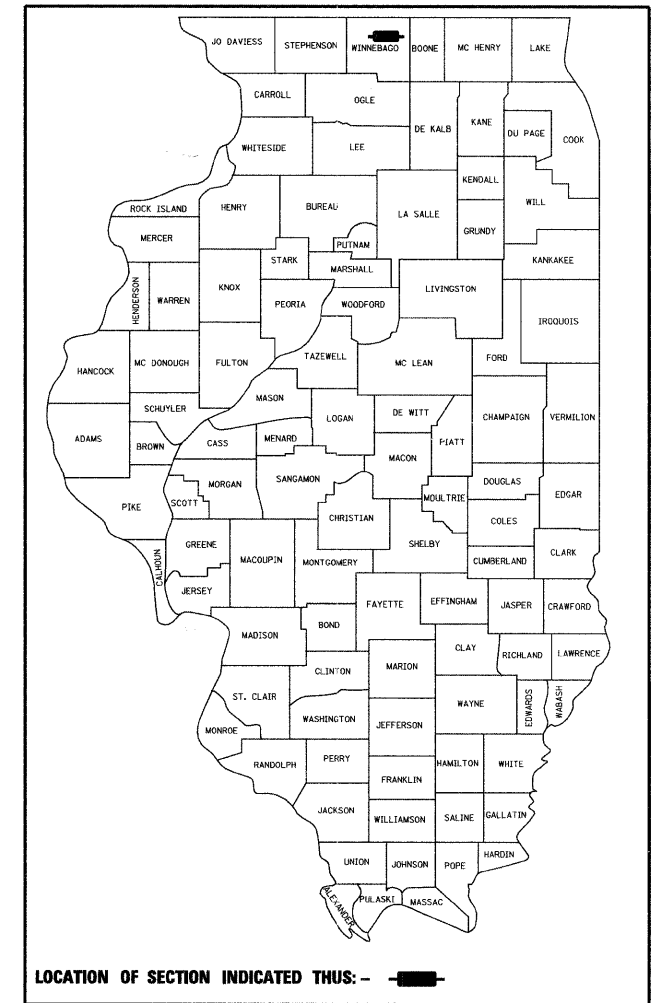
INDEX OF SHEETS	
SHEET NO.	DESCRIPTION
1	COVER SHEET
2	GENERAL NOTES & SPECIFICATIONS
3	SUMMARY OF QUANTITIES
4	TYPICAL SECTIONS
5	PLAN AND PROFILE
6	TEMPORARY DETOUR PLAN
7	EROSION CONTROL & RESTORATION PLAN
8-13	BRIDGE PLANS
14-15	CROSS SECTIONS

STATE STANDARDS	
000001-05	STANDARD SYMBOLS, ABBREVIATIONS AND PATTERNS
280001-04	TEMPORARY EROSION CONTROL SYSTEM
515001-03	NAME PLATE FOR BRIDGES
606001-04	CONCRETE CURB TYPE B AND COMBINATION CONCRETE CURB AND GUTTER
630001-08	STEEL PLATE BEAM GUARDRAIL
631011-05	TRAFFIC BARRIER TERMINAL, TYPE 2
631026-05	TRAFFIC BARRIER TERMINAL, TYPE 5
635006-03	REFLECTOR AND TERMINAL MARKER PLACEMENT
635011-02	REFLECTOR MARKER AND MOUNTING DETAILS
701006-03	OFF-RD OPERATIONS, 2L, 2W, 15' (4.5M) TO 24" (600mm) FROM PAVEMENT EDGE
701301-03	LANE CLOSURE, 2L, 2W, SHORT TIME OPERATIONS
701306-02	LANE CLOSURE, 2L, 2W, SLOW MOVING OPERATIONS DAY ONLY, FOR SPEEDS ≥ 45 MPH
701901-01	TRAFFIC CONTROL DEVICES
720001-01	SIGN PANEL MOUNTING DETAILS
720006-02	SIGN PANEL ERECTION DETAILS
720011-01	METAL POSTS FOR SIGNS, MARKERS AND DELINEATORS
728001-01	TELESCOPING STEEL SIGN SUPPORT
729001-01	APPLICATIONS OF TYPES A & B METAL POSTS (FOR SIGNS AND MARKERS)
780001-02	TYPICAL PAVEMENT MARKINGS
BLR 21-8	TYPICAL APPLICATION OF TRAFFIC CONTROL DEVICES FOR CONSTRUCTION ON RURAL LOCAL HIGHWAYS

CITY OF ROCKFORD

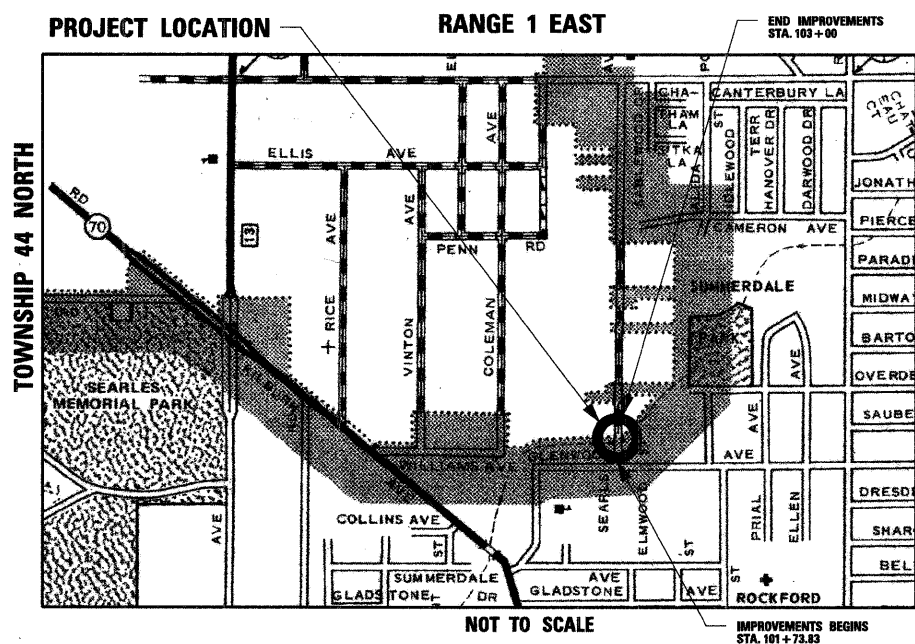
PLANS FOR PROPOSED FEDERAL AID HIGHWAY

FAU ROUTE 5156
SEARLES AVENUE
OVER THE NORTHWEST DRAINAGEWAY
SECTION 08-00550-00-BR
BRIDGE SUPERSTRUCTURE REPLACEMENT
PROJECT NO. BHM-5099 (077)
S.N. 101-6004
WINNEBAGO COUNTY
C-92-065-08



ENGINEER AND SURVEYOR:
 SEC GROUP INC.
 4500 PRIME PARKWAY
 MCHENRY, ILLINOIS 60050-2136
 (815) 385-1778
 CONTACT:
 BOB DAVIES, S.E., P.E. - STRUCTURAL ENGINEER
 KEVIN M. ARFT, P.E. - PROJECT ENGINEER

STRUCTURE INFORMATION:
 EXISTING SN: 101-6004;
 EXISTING SINGLE SPAN STRUCTURE CONSISTS OF PPC DECK BEAMS WITH AN OUT-TO-OUT WIDTH OF 42'-0" AND A TOTAL LENGTH OF 29'-0" BK. TO BK. ABUTMENTS WITH A 17 DEGREE 22 MINUTE SKEW. THE SUBSTRUCTURE CONSIST OF CLOSED CONCRETE ABUTMENTS ON UNKNOWN FOUNDATIONS. SUPER STRUCTURE TO BE REMOVED AS SHOWN WITH NO SLAVAGE.
 PROPOSED WORK INCLUDES PLACING A REINFORCED CONCRETE SLAB SUPERSTRUCTURE AS SHOWN.



FUNCTIONAL CLASSIFICATION
 COLLECTOR (URBAN)

DESIGN SPEED
 SEARLES AVE.: 35 MPH

SPEED LIMIT
 SEARLES AVE.: 30 MPH

2004 TRAFFIC DATA:
 SEARLES AVE.: ADT=1,750

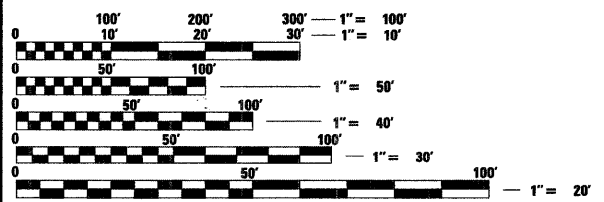
PRINTED BY THE AUTHORITY OF THE STATE OF ILLINOIS

CITY OF ROCKFORD

APPROVED 02-02-09 (DATE)
John J. Hamby, P.E.
 CITY OF ROCKFORD, CITY ENGINEER

PASSED FEBRUARY 19, 2009 (DATE)
James T. Nelson
 DISTRICT 2 ENGINEER OF LOCAL ROADS & STREETS

RELEASING FOR BID BASED ON LIMITED REVIEW FEBRUARY 19, 2009 (DATE)
Deanna F. Ryan
 DEPUTY DIRECTOR OF HIGHWAYS, REGION 2 ENGINEER



FULL SIZE PLANS HAVE BEEN PREPARED USING STANDARD ENGINEERING SCALES. REDUCED SIZED PLANS WILL NOT CONFORM TO STANDARD SCALES. IN MAKING MEASUREMENTS ON REDUCED PLANS, THE ABOVE SCALES MAY BE USED.

J.U.L.I.E.
 JOINT UTILITY LOCATION INFORMATION FOR EXCAVATION
 1-800-892-0123

CONTRACT NO. 85444

ROCKFORD TOWNSHIP
 GROSS LENGTH OF IMPROVEMENT = 126 FT. = 0.02 MILES
 NET LENGTH OF IMPROVEMENT = 126 FT. = 0.02 MILES

STRUCTURAL ENGINEER'S SIGN & SEAL

Robert G. Davies
 ROBERT G. DAVIES, S.E., P.E.

DATE 2/6/2009

11/30/2010
 EXPIRES

PROFESSIONAL ENGINEER'S SIGN & SEAL

Kevin M. Arft
 KEVIN M. ARFT, P.E.

DATE 02-06-2009

11-30-2009
 EXPIRES

FEDERAL AID DESIGN ENGINEER: LAURA CONNOLLY (815) 284-2271