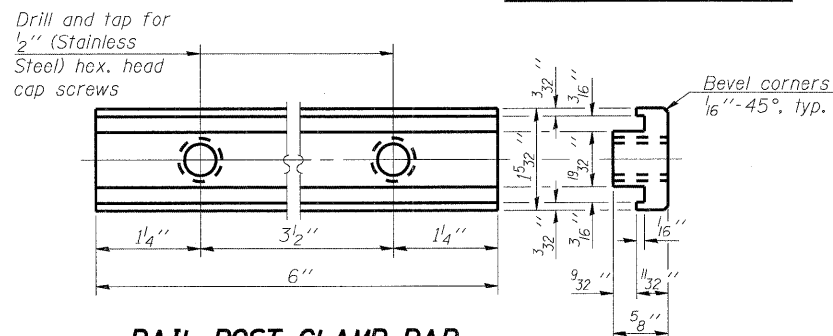


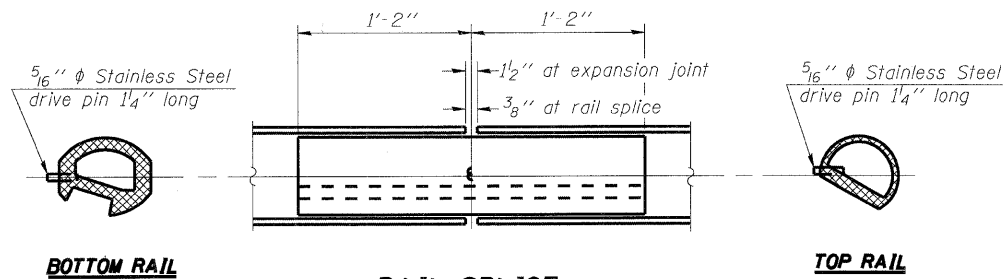
**VIEW B-B**

**RAIL POST DETAILS**



**RAIL POST CLAMP BAR**

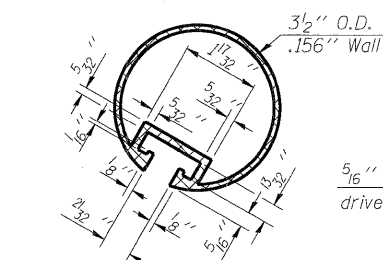
For Top Rail



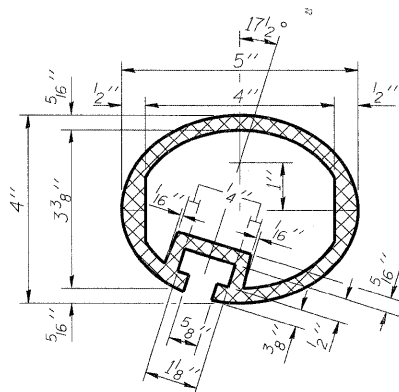
**BOTTOM RAIL**

**RAIL SPLICE**

**TOP RAIL**

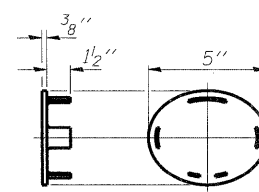


**SECTION THRU TOP RAIL**



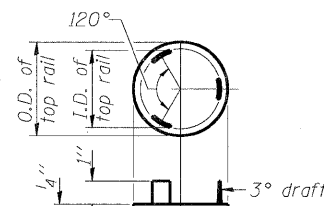
**SEC. THRU ELLIPTICAL RAIL SECTION**

\*In lieu of the cast-in-place anchor device shown, the Contractor has the option of drilling and setting stainless steel anchor rods of the same diameter and grade as the specified cap screws according to Article 509.06 of the Standard Specifications. Embedment shall be according to the manufacturer's specifications.



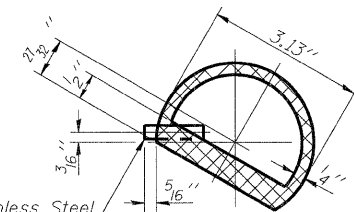
**CAST END CAP**

For bottom rail  
DRIVE FIT TYPE



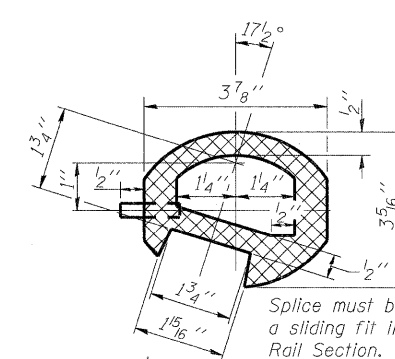
**CAST END CAP**

For top rail

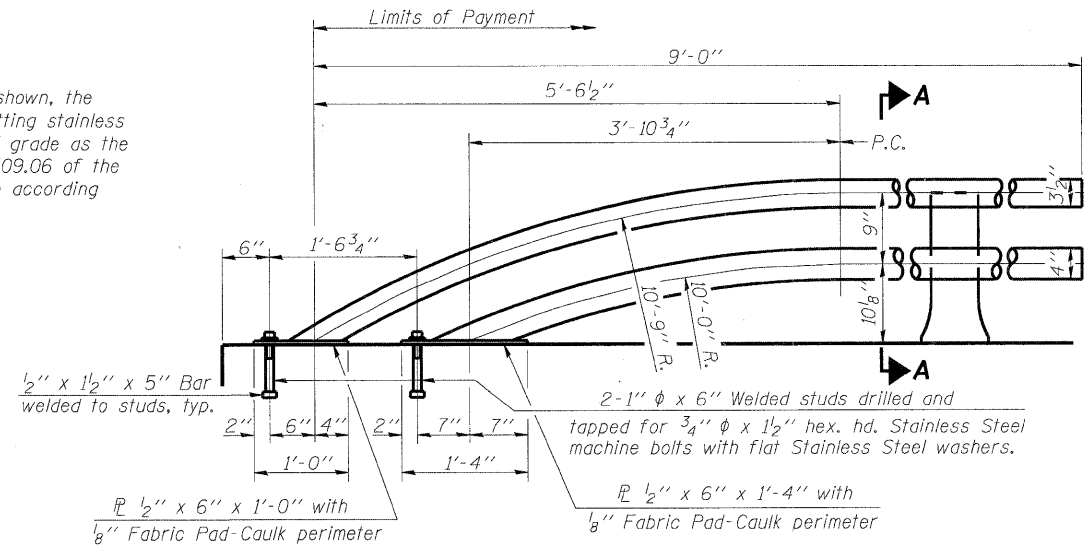


**SECTION THRU SPLICE**

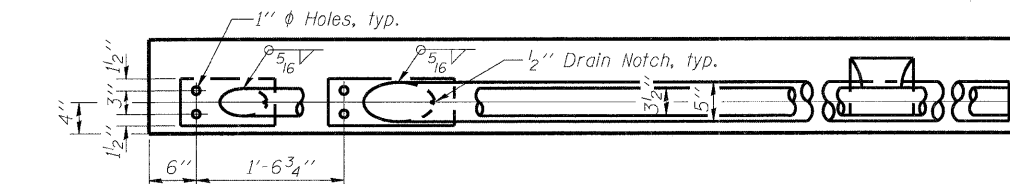
For Top Rail



**SEC. THRU SPLICE**



**RAIL TERMINAL SECTION**



**RAIL END TREATMENT FOR TYPE 5 AND 6 TERMINAL**

Note: The end rail post shall be set back as required for the terminal rail section.

Notes:  
All Posts shall be normal to parapet.  
All joints in rail shall be spliced per detail.  
All exposed rail ends shall be capped per detail.  
Provide 1-1/8\"/>

**BILL OF MATERIAL**

Item	Unit	Quantity
Aluminum Railing, Type L	Foot	42

**ALUMINUM RAILING, TYPE L**  
SEARLES AVENUE (FAU ROUTE 5156)  
OVER THE NORTHWEST DRAINAGEWAY  
CITY OF ROCKFORD  
WINNEBAGO COUNTY  
S.N. 101-6004

DATE: 2/6/09

DESIGNED	KMA
CHECKED	RGD
DRAWN	WJH
CHECKED	RGD

R-20

5-16-08 (7'-0" to 10'-0" Post spacing)

**SEC GROUP, INC.**  
Illinois Professional Design Firm # 184-000108  
• Engineering • Surveying • Planning • Landscape Architecture  
4500 Prime Parkway, McHenry, IL 60050  
T. 815.385.1778 F. 815.385.1781  
www.secgroupinc.com  
• McHenry, IL • Yorkville, IL • New Lenox, IL • Chicago, IL

SHEET NO.	F.A.U RTE.	SECTION	COUNTY	TOTAL SHEETS	SHEET NO.
S-5	5156	08-00550-00-BR	Winnebago	15	12
S-6 SHEETS			CONTRACT NO. 85444		
FED. ROAD DIST. NO. 2 ILLINOIS FED. AID PROJECT BHM 5099 (077)					