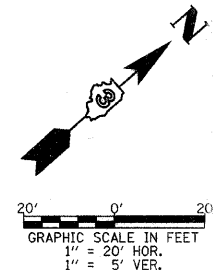
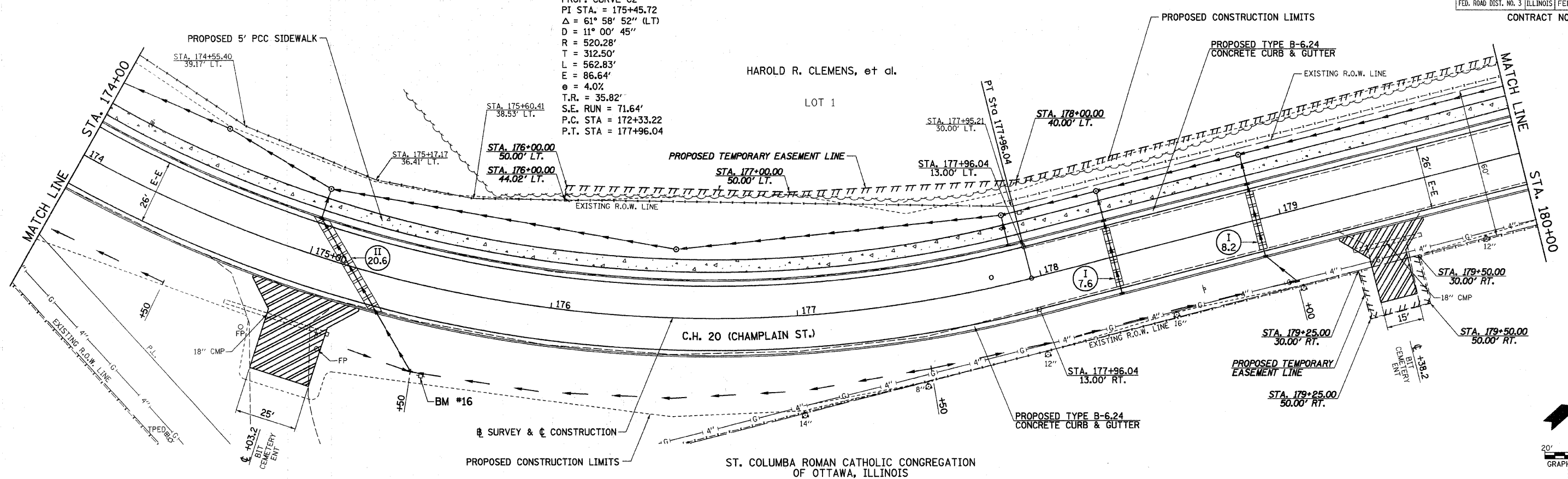


RTE. NO.	SECTION	COUNTY	TOTAL SHEETS	SHEET NO.
CH 2006-00275-00-PV		LaSALLE	218	5C
STA. 174+00		TO STA. 180+00		
FED. ROAD DIST. NO. 3 ILLINOIS FED. AID PROJECT				
CONTRACT NO. 87352				

PROP. CURVE C2
 PI STA. = 175+45.72
 $\Delta = 61^\circ 58' 52''$ (LT)
 $D = 11^\circ 00' 45''$
 $R = 520.28'$
 $T = 312.50'$
 $L = 562.83'$
 $E = 86.64'$
 $e = 4.0\%$
 $T.R. = 35.82'$
 $S.E. RUN = 71.64'$
 $P.C. STA = 172+33.22$
 $P.T. STA = 177+96.04$

HAROLD R. CLEMENS, et al.

LOT 1



PLAN	SURVEYED	DATE
	BY	
	DATE	
	BY	
	DATE	
	BY	

PROFILE	SURVEYED	DATE
	BY	
	DATE	
	BY	
	DATE	
	BY	

