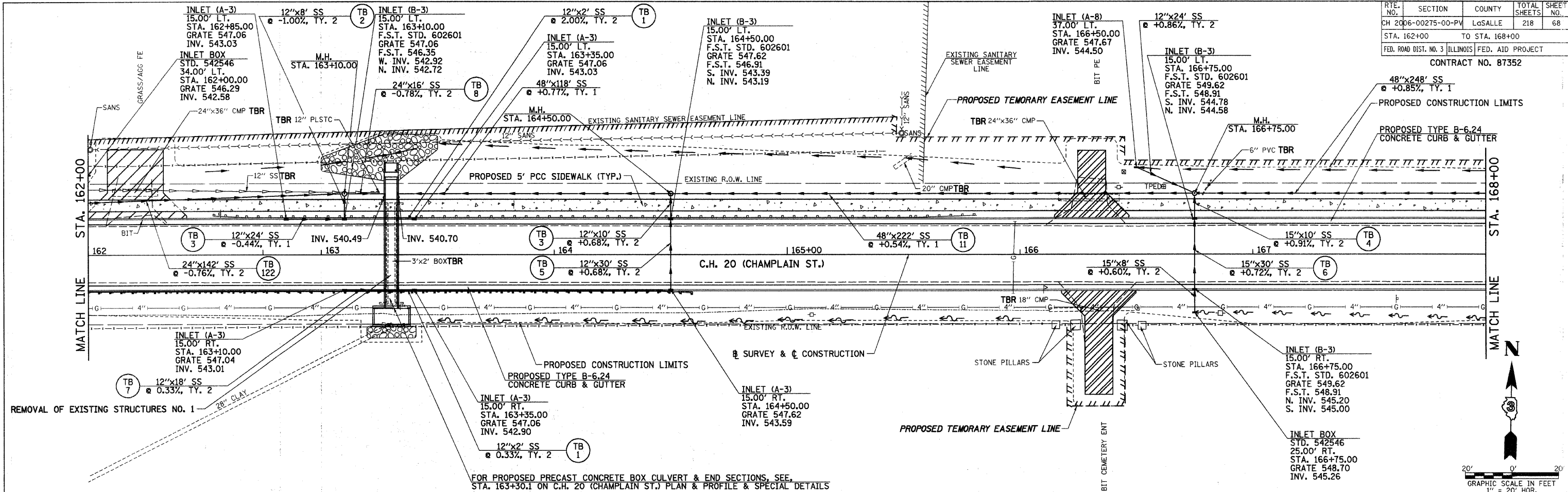
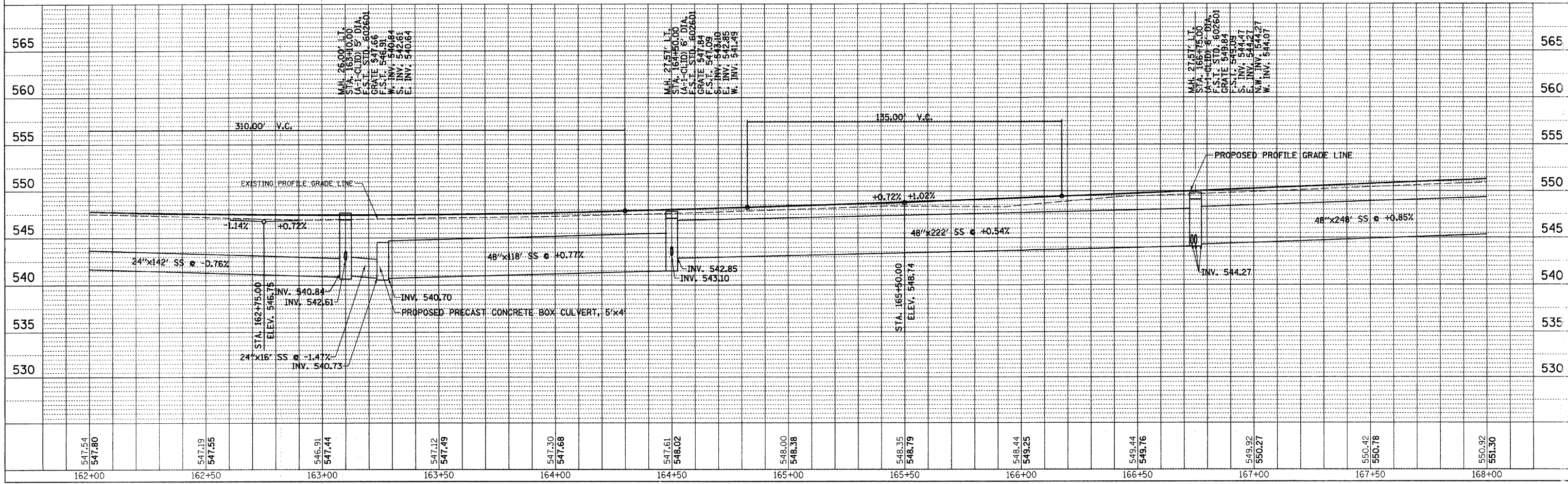


RTE. NO.	SECTION	COUNTY	TOTAL SHEETS	SHEET NO.
CH 2006-00275-00-PV		LaSALLE	218	68
STA. 162+00		TO STA. 168+00		
FED. ROAD DIST. NO. 3 ILLINOIS FED. AID PROJECT				
CONTRACT NO. 87352				



FOR PROPOSED PRECAST CONCRETE BOX CULVERT & END SECTIONS, SEE STA. 163+30.1 ON C.H. 20 (CHAMPLAIN ST.) PLAN & PROFILE & SPECIAL DETAILS



DATE	BY
DATE	BY
DATE	BY

DATE	BY
DATE	BY
DATE	BY